

INSTRUCTIONS

1. Original and/or subsequent record used to evaluate the corner position.
2. Description of evidence found, note discrepancies in the record, state method of establishing lost or obliterated corners.
3. Description of monument and accessories set to perpetuate the corner position.
4. Sketch of corner, show all pertinent data which can best be shown in a sketch example, corner marking, topography lies, position of accessories, etc.
5. Certification must be signed and sealed by Registered Land Surveyor in State of Montana.
6. Fill in Cross Index & Section Diagram at bottom of sheet.

CERTIFIED CORNER RECORDATION

Corner

1	6
12	7

 T. 34 N R. 26/25 W P.M.M. Lincoln County

1. 80.00 chains: Set a post, 4 feet long, 4 inches square, 24 inches in the ground for the corner to sections 1, 6, 7, and 12 marked:

T34N S6 on the N.E.

R25W S7 on the S.E.

R26W S12 on the S.W. and

S1 on the N.W. face, from which:

A 36" fir bears N 38° E, 13 links, marked T34N R25W S6 BT

An 18" pine bears S 61 1/4° E, 24 links, marked T34N R25W S7 BT

A 7" pine bears S 58 1/2° W, 26 links, marked T34N R26W S12 BT

A 6" pine bears N 34° W, 30 links, marked T34N R26 W S1 BT

2. BLM 1961 - The cor. of secs. 1, 6, 7, and 12, on the W. bdy. of the Tp., as determined from the remains of the original bearing trees.

At the corner point

Set an iron post, 30 ins. long, 2 1/2 ins. diam., 26 ins. in the ground, in concrete, with brass cap mkd. (as shown below) from which:

The remains of the original bearing trees:

A stump hole bears N 49 1/4° E, 13 lks. dist., remains of tree lying on ground, visible marks T34N R25 W (Record N 38° E, 13 lks.)

A decayed stump bears S 56 1/4° E, 24 lks. dist. (Record S 61 1/4° E, 24 lks.)

A stump hole bears S 58 1/2° W, 26 lks. dist., remains of tree lying on ground, mkd. T34N R26W S12 BT (Record)

A stump hole, bears N 37° W, 30 lks. dist. (Record N 34° W, 30 lks.)

The new bearing trees:

A fir, 10 ins. diam., bears N 20° E, 22 lks. dist., mkd. T34N R25W S6 BT

A pine, 10 ins. diam., bears S 47 1/2° E, 47 lks. dist., mkd. T34N R25W S7 BT

A larch 10 ins. diam., bears S 28 1/4° W, 55 lks. dist., mkd. T34N R26W S12 BT

A fir 9 ins. diam., bears N 15 1/2° W, 36 lks. dist., mkd. T34N R 26 W S1 BT

Corner is situated 3 lks. E. of intersection of fences extending N. E. & W.

3. Found a 1961 BLM brass cap marked as shown below, from which:

A 12" larch bears S 28 1/4° W, 36.30 feet with an overgrown blaze.

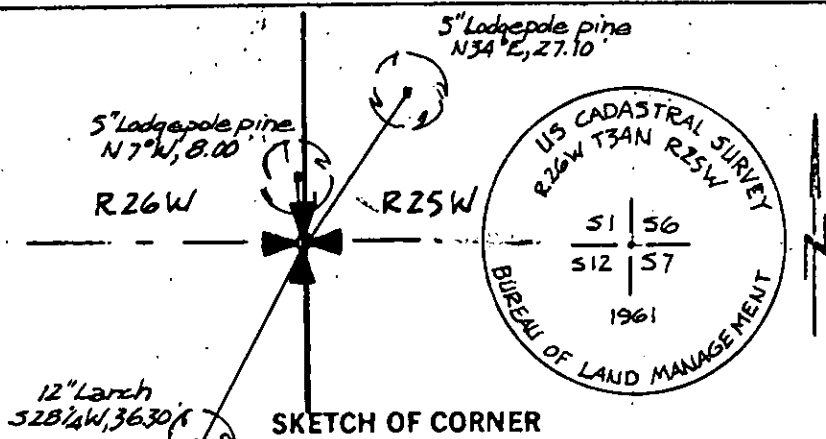
The corner falls in an E-W fenceline.

4. I scribed two new bearing trees. There were no trees available in the southeast quadrant.

A 5" pine bears N 34° E, 27.1 feet. marked T34N R25 W S6 BT

A 5" pine bears N 7° W, 8.0 feet, marked T34N R26W S1 BT

I painted the monument and accessories with bright red paint and attached a Land Monument sign to a fence post 1 foot east of the corner.



CERTIFICATION

James R. Staples

certify the information shown herein is true and correct.

James R. Staples
Signature Ground Party Chief

Jack H. Ninneman

certify that this Corner Record correctly represents work performed by me or under my direction in compliance with the "Corner Recordation Act" (70-22-101, et seq., M.D.A.)

Jack H. Ninneman
Signature of Surveyor & Seal

Date: 12/16/83 Reg. No. 46613

Employer: Ninneman Engineering

Office of Clerk and Recorder, County of Lincoln. This "corner

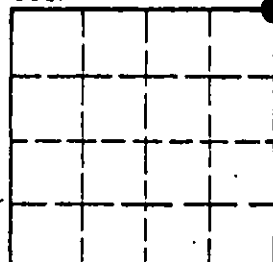
record" was filed for record on the March 1st day of 1984

was noted on the cross-index plat and is assigned page No. # 2517, in

book No. _____

Kenneth B. Siegel by Karen L. Kampke
County Official Deputy

Sec. 12



• corner this sheet

