

INSTRUCTIONS

1. Original and/or subsequent record used to evaluate the corner position.
2. Description of evidence found, note discrepancies in the record, state method of establishing lost or obliterated corners.
3. Description of monument and accessories set to perpetuate the corner position.
4. Sketch or corner, show all pertinent data which can best be shown in a sketch example, corner marking, topography ties, position of accessories, etc.
5. Certification must be signed and sealed by Registered Land Surveyor in State of Montana.
6. Fill in Cross Index & Section Diagram at bottom of sheet.

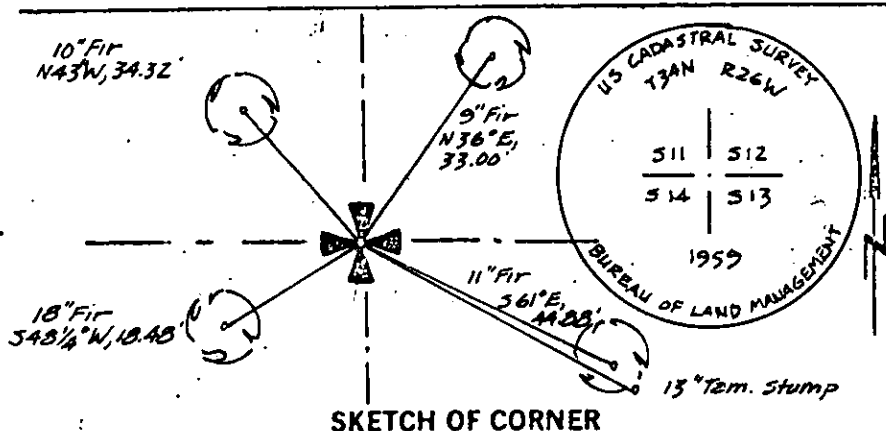
CERTIFIED CORNER RECORDATION

Corner

11	12
14	13

 T. 34 N R. 26 W P.M.M. Lincoln County

1. 80.00 chains: set a post 4 feet long, 4 inches square, 24 inches in the ground, for the corner to secs. 11, 12, 13, and 14 marked:
 T34N S12 on the N.E.
 R26W S13 on the S.E.
 S 14 on the S.W. and
 S 11 on the N.W. face with 1 notch on the E. and 4 on the S. edges from which:
 A 10" fir bears N $46\frac{1}{2}^\circ$ E, 65 links, marked T34N R26 W S12 BT
 A 12" tamarack bears S $61\frac{1}{4}^\circ$ E, 75 links, marked T34N R26 W S13 BT
 A 12" fir bears S $48\frac{1}{4}^\circ$ W, 28 links, marked T34N R26W S14 BT
 A 10" fir bears N $28\frac{1}{2}^\circ$ W, 14 links, marked T34N R26W S11 BT
2. BLM 1959 - The cor. of secs. 11, 12, 13, and 14, as determined from the remains of two of the original bearing trees.
 At the corner point
 Set an iron post, 30 ins. long, $2\frac{1}{2}$ ins. diam., 26 ins. in the ground, in concrete with brass cap mkd. (as shown below) from which:
 The remains of the original bearing trees:
 A fir, 18 ins. diam., bears S $48\frac{1}{4}^\circ$ W, 28 lks. dist., visible mks. S14 (Record)
 A stump, 18 ins. diam., bears N $28\frac{1}{2}^\circ$ W, 14 lks. dist., visible mks. BT (Record)
 The new bearing trees:
 A fir, 8 ins. diam., bears N 36° E, 50 lks. dist., mkd. T34N R26W S12 BT
 A fir, 7 ins. diam., bears S 61° E, 68 lks. dist., mkd. T34N R26W S13 BT
 A fir, 7 ins. diam., bears N 43° W, 52 lks. dist., mkd. T34N R26W S11 BT
 Raise a mound of stone, 3 ft. base, 2 ft. high, W. of the iron post.
3. Found a 1959 BLM brass cap marked as shown below from which:
 An 18" fir bears S $48\frac{1}{4}^\circ$ W, 18.48 feet, with overgrown blaze (original record)
 The original BT stump noted as found in 1959 is only a stump hole.
 A 13" tamarack stump bears S $61\frac{1}{4}^\circ$ E, 49.50 feet, with "BT" visible
 A 9" fir bears N 36° E, 33.00 feet, with visible scribing
 An 11" fir bears S 61° E, 44.88 feet, with an overgrown blaze
 A 10" fir bears N 43° W, 34.32 feet, with an overgrown blaze.
4. I painted the monument and accessories with bright red paint.



SKETCH OF CORNER

CERTIFICATION

1. James R. Staples

certify the information shown hereto is true and correct.

James R. Staples
Signature Ground Party Chief1. Jack H. Ninneman

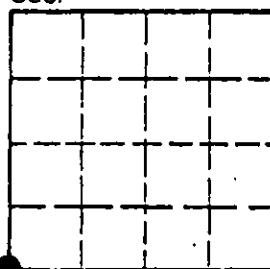
certify that this Corner Record correctly represents work performed by me or under by direction in compliance with the "Corner Recordation Act" (70-22-101, et seq., M.D.A.)

Jack H. Ninneman
Signature of Surveyor & SealDate: 12/16/81 Reg. No. 46613Employer: Ninneman Engineering

Office of Clerk and Recorder, County of Lincoln. This "corner record" was filed for record on the March 1st day of 1984 was noted on the cross-index plat and is assigned page No. #2514, in book No. _____

Janet B. F. Siegel by Karen L. Kamphe
County Official Deputy

Sec. 12



• corner this sheet

