

1. Original and/or subsequent record used to evaluate the corner position.
2. Description of evidence found, note discrepancies in the record, state method of establishing lost or obliterated corners.
3. Description of monument and accessories set to perpetuate the corner position.
4. Sketch or corner, show all pertinent data which can best be shown in a sketch example, corner marking, topography ties, position of accessories, etc.
5. Certification must be signed and sealed by Registered Land Surveyor in State of Montana.
6. Fill in Cross Index & Section Diagram at bottom of sheet.

CERTIFIED CORNER RECORDATION

Corner N¹/₄ Corner Sec. 11 T. 34N R. 26W P.M.M. Lincoln County

- (1) Set a post 3 ft. long, 3 ins. square, 24 ins. in the ground for $\frac{1}{4}$ cor., marked $\frac{1}{4}$ S on North face from which

A tamarack, 22 ins. diam., bears N 6°E 26 lks. dist. marked $\frac{1}{4}$ SBT

A tamarack, 18 ins. diam., bears S 31°E 23 lks. dist. marked $\frac{1}{4}$ SBT.

Determined from the remains of the original bearing trees at the cor. point set an iron post, 30 ins. long, 2 $\frac{1}{2}$ ins. diam., 24 ins. in the ground, with brass cap marked

T34N R26W

$\frac{1}{4}$ S 2
S 11

1967 from which

The original bearing trees:

A tamarack stump, 22 ins. diam., bears N 6°E, 26 lks. dist., mkd. $\frac{1}{4}$ S BT. (record)

A tamarack stump, 18 ins. diam., bears S 28°E., 23 lks. dist. with no visible scribing. (record: S 31°E, 23 lks.)

New bearing trees:

A pine, 10 ins. diam., bears S 1°E., 23 lks. dist., mkd. $\frac{1}{4}$ S11 BT.

Raise a collar of stone, 3 ft. diam., around the iron post.

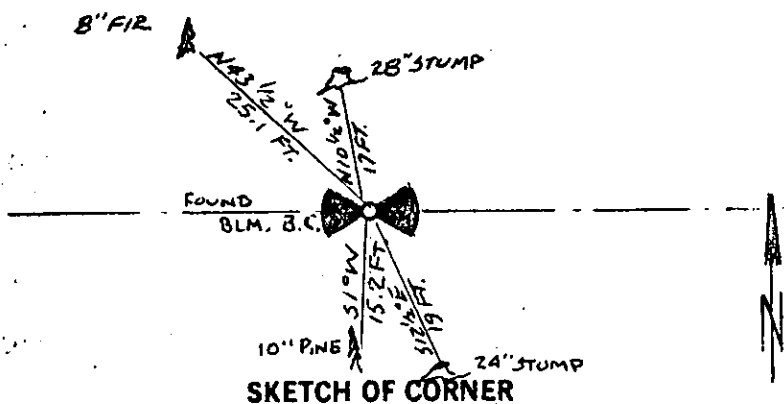
- (2) Found BLM brass capped monument stamped as shown below from which;

An 8" Doug. fir bears N 43 $\frac{1}{2}$ °W 25.1 ft.

A 28 in. original BT stump bears N 10 $\frac{1}{2}$ °W 17 ft.

A 24 in. original BT stump bears S 12 $\frac{1}{2}$ °E 19 ft.

A 10" lodgepole pine bears S 01°W 15.2 ft.



CERTIFICATION
Walter Gibbons

I, _____
certify the information shown herein is true and correct.

Signature Ground Party Chief

I, Jack H. Ninneman

certify that this Corner Record correctly represents work performed by me or under by direction in compliance with the "Corner Recordation Act" (70-22-101, et seq., M.D.A.)

Jack H. Ninneman
Signature of Surveyor & Seal

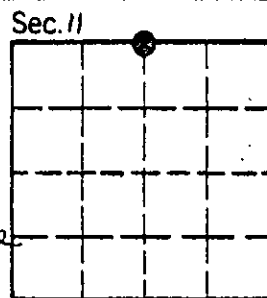
Date: 1/25/84 Reg. No. 46613

Employer: Ninneman Engineering Inc.

Office of Clerk and Recorder, County of Lincoln. This "corner record" was filed for record on the March 21st day of 1984 was noted on the cross-index plat and is assigned page No. #2502, in book No. _____

Anet B.F. Siegel by Karen L. Kampfer
County Official Deputy

Cross Index No. _____ T. 34N R. 26W P.M.M.



• - corner this sheet

