

- INSTRUCTIONS
1. Original and/or subsequent record used to evaluate the corner position.
 2. Description of evidence found, note discrepancies in the record, state method of establishing lost or obliterated corners.
 3. Description of monument and accessories set to perpetuate the corner position.
 4. Sketch of corner, show all pertinent data which can best be shown in a sketch example, corner marking, topography ties, position of accessories, etc.
 5. Certification must be signed and sealed by Registered Land Surveyor in State of Montana.
 6. Fill in Cross Index & Section Diagram at bottom of sheet.

CERTIFIED CORNER RECORDATION

Corner W $\frac{1}{2}$ corner Sec. 2 T. 34N R. 26W P.M.M. Lincoln County

- (1) Set a limestone, 20 X 12 X 6 ins., 15 ins. in the ground for $\frac{1}{4}$ Sec. cor. marked $\frac{1}{4}$ on W. face, from which
A fir 14 ins. diam., bears N 55°E., 72 lks. dist., marked $\frac{1}{4}$ S. B.T.
A fir 20 ins. diam., bears S 52°45' W 47 lks. dist., marked $\frac{1}{4}$ S.B.T.

The $\frac{1}{4}$ sec. corner of sections 2 and 3, as determined from the remains of the original bearing trees. At the corner point. Set an iron post, 30 ins. long, 2 $\frac{1}{2}$ ins. diam., 26 ins. in the ground, in concrete, with brass cap marked

T34N R26W

S 3 | S 2

1960 from which

The remains of the original bearing trees:

A dead fir, 14 ins. diam., bears N.55°E., 72 lks. dist., marked $\frac{1}{4}$ S BT. (record)

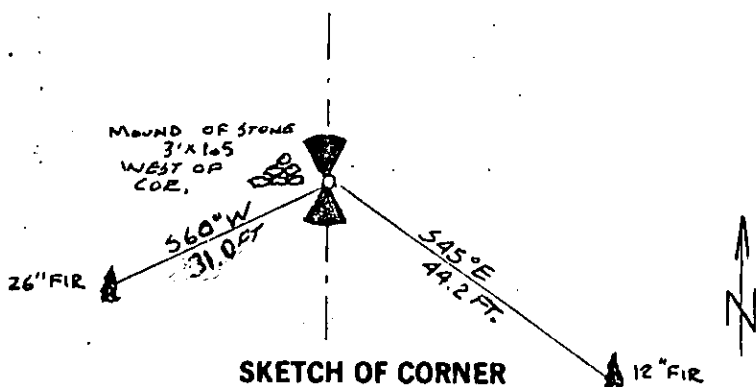
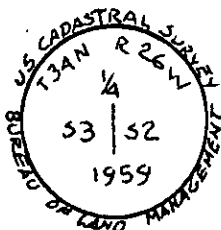
A fir, 24 ins. diam., bears S.52 $\frac{1}{2}$ °W., 47 lks. dist., marked $\frac{1}{4}$ S BT. (record)

The new bearing tree:

A fir, 10 ins. diam., bears S 45°E., 67 lks. dist., marked $\frac{1}{4}$ S2 BT.

Raise a mound of stone, 3 ft. base, 2 ft. high, W. of the iron post.

- (2) Found BLM brass capped monument stamped as shown below from which
A 26" Grand Fir (scribing overgrown) bears S 60°W 47 lks.
A 12" Grand Fir (scribing legible) bears S 45°E 67 lks.
A mound of stone 3 ft. X 1.5 ft. west of corner.



SKETCH OF CORNER

CERTIFICATION
David Stanley

I, _____
certify the information shown herein is true and correct.

Signature Ground Party Chief

I, Jack H. Ninneman

certify that this Corner Record correctly represents work performed by me or under my direction in compliance with the "Corner Recordation Act" (70-22-101, et seq., M.D.A.)

Jack H. Ninneman
Signature of Surveyor & Seal

Date: 1/25/84 Reg. No. 46615

Employer: Ninneman Engineering Inc.

Office of Clerk and Recorder, County of Lincoln. This "corner

record" was filed for record on the March 1st day of 1984

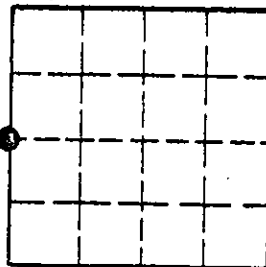
was noted on the cross-index plat and is assigned page No. #2473, in

book No. _____

Janet B.F. Siegel by Karen R. Kamphe
County Official Deputy

Cross Index No. _____ T. 34N R. 26W P.M.M.

Sec. 2



• corner this sheet

