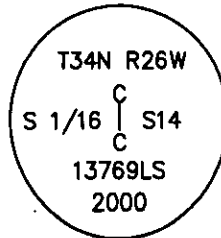


CERTIFIED CORNER RECORDATION

Corner CS1/16 Sec. 14 T. 34 N. R. 26 W. P.M.M. LINCOLN County

- I. Record: No previous record.
- II. No evidence found.
- III. At the position determined by survey, set a 3/4 in. diam. aluminum rod, 48 ins. long, 43 ins. in the ground, with a 3 1/4 in. diam. aluminum cap marked as shown:

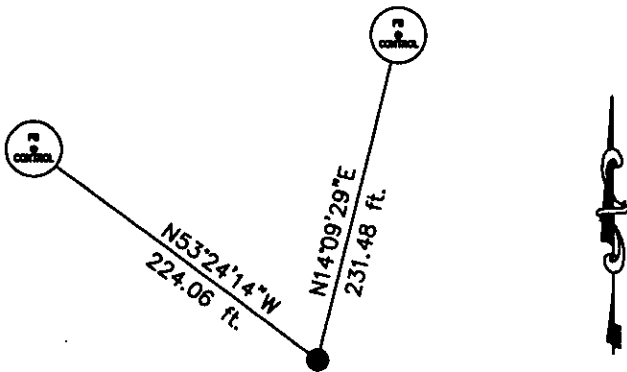
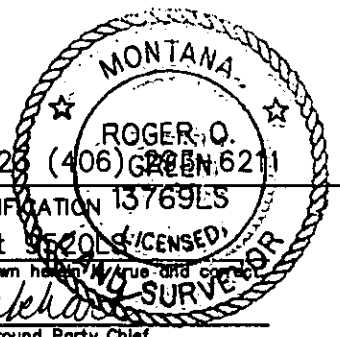


The GPS Control reference points:

A 5/8 in. diam., 24 in. long rebar with a yellow plastic cap mkd. "FS CONTROL", bears N14°09'29"E, 231.48 ft. dist.
 A 5/8 in. diam., 24 in. long rebar with a yellow plastic cap mkd. "FS CONTROL", bears N53°24'14"W, 224.06 ft. dist.

Set a 6 ft. galvanized steel guard post 3.0 ft. east and west, with Property Boundary and Land Survey Monument decals attached.

Date of Fieldwork: 7/13/2000
 Survey crew: Marc Burkhart
 Magnetic declination: 18° East assumed
 Equipment used: Hand compass and loggers tape
 U.S. Forest Service, Supervisors Office, 1101 Hwy. 2 West, Libby, MT 59926 (406) 835-6211

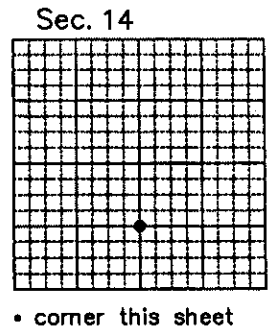


SKETCH OF CORNER

NOT TO SCALE

CERTIFICATION 13769LS
 I, Marc Burkhart certify the information shown herein is true and correct.
Marc Burkhart
 Signature Ground Party Chief
 I, Roger O. Green certify that this Corner Record correctly represents work performed by me or under my direction in compliance with the "Corner Recordation Act" (70-22-101, et seq., M.C.A.)
Roger O. Green
 Signature of Surveyor & Seal
 Date: 4/02/2003 Reg. No. 13769LS
 Employer: U. S. Forest Service

Office of Clerk and Recorder, County of Lincoln This "corner record" was filed for record on 7-10-03
 was noted on the cross-index plat and is assigned page No. _____, in book No. 168792
J. Morris
 County Official



• corner this sheet

SH# 2072
 Cross Index No. M-19 T. 34N. R. 26W. P.M., MT
 Adopted July 1, 1981, Montana Board of Professional Engineers & Land Surveyors



10-10-57

Wm. L. Brown

10-10-57