

# CERTIFIED CORNER RECORDATION

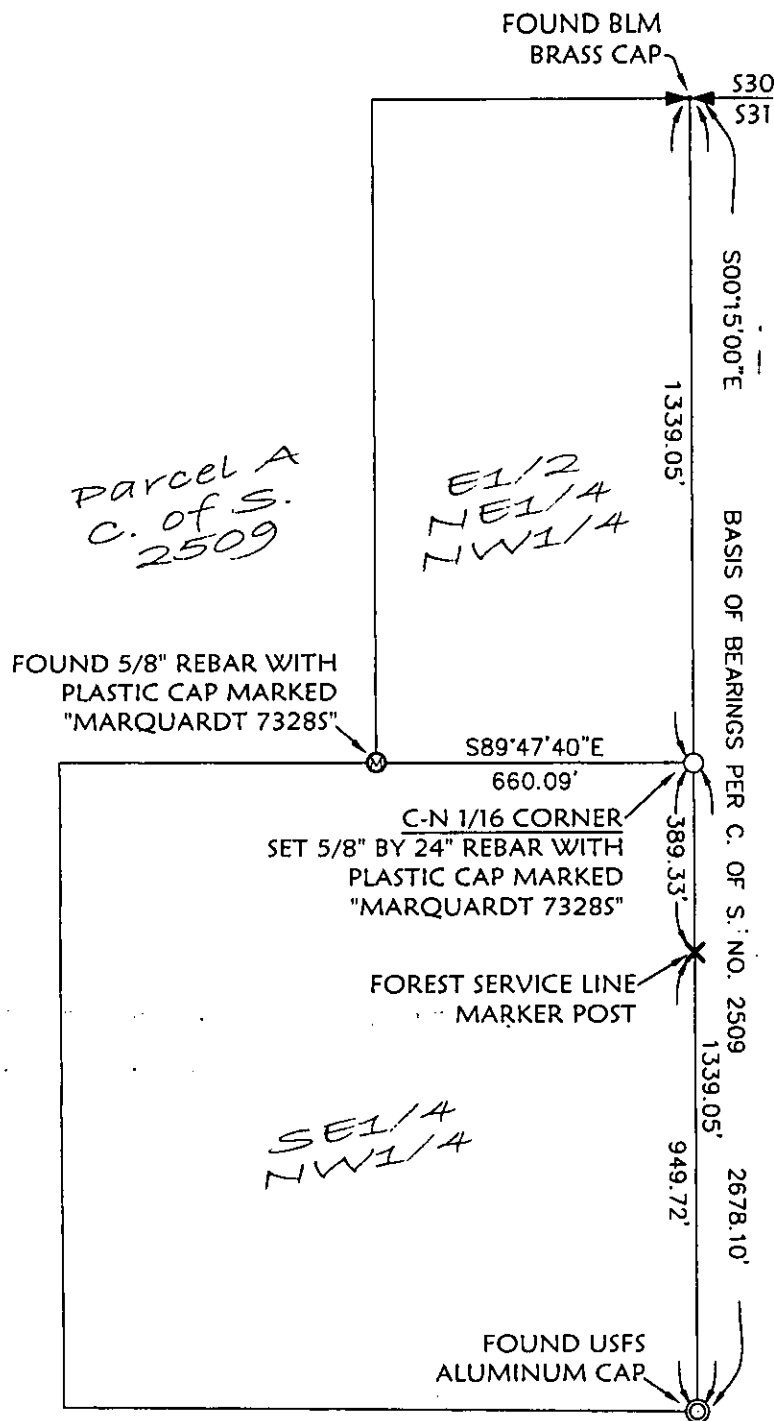
Corner C-N 1/16, Section 31 T. 34N R. 26W P.M.M. Lincoln County

## RECORD:

THIS CORNER HAS NOT BEEN PREVIOUSLY MONUMENTED, BUT ITS CALCULATED POSITION IS SHOWN ON C. OF S. NO. 2509

## SET:

SET 5/8" BY 24" REBAR WITH PLASTIC CAP MARKED "MARQUARDT 73285" FROM TIES TO MONUMENTS AS SHOWN ON C. OF S. NO. 2509



SKETCH OF CORNER

| CERTIFICATION  |  |
|--|--|
| I, <u>Sherm Marquardt</u>                                  | certify the information shown herein is true and correct.  |
| <u>[Signature]</u>   | Signature of Ground Party  |
| I, <u>Dawn Marquardt</u>                                   | certify that this Corner Record correctly represents work performed by me or under my direction in compliance with the "Corner Recordation Act" (70-22-101, MCA) |
| <u>[Signature]</u>   | Signature of Surveyor & Seal   |
| Date: <u>11/9/2009</u>                                     | Reg. No. <u>7328 LS</u>  |
| Employer: <u>Marquardt &amp; Marquardt Surveying, Inc.</u> |  |

Office of Clerk and Recorder, County of Lincoln . This "corner

record" was filed for record 222906 BOOK: CCR CC&R'S PAGE: 11340 Pages: 1

was noted on the cross-index STATE OF MONTANA LINCOLN COUNTY

Book No.                      RECORDED: 11/18/2009 11:00 KOI: CC&R'S

TAMMY D. LAUER CLERK AND RECORDER

FEE: \$0.00

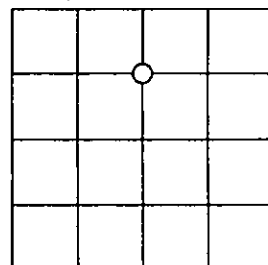
BY: [Signature]

TO: MARQUARDT SURVEYING, INC. 201 3RD AVENUE WEST, KALISPELL, MT

Cross Index No. W-3 T. 34N R. 26W PMM

Adopted July 1, 1981, Montana Board of Professional Engineers & Land Surveyors

Sec. 31



○ corner this sheet

