

CERTIFIED CORNER RECORDATION

Corner S25|S30
S36|S31 T. 34 N. R. 26 W. P.M.M. LINCOLN County

I. Record: 1893 GLO Survey of the Horse Plains Guide Meridian, by Frank L. Siezer and Abram L. Jaqueth; 80.00 chs. Set a limestone, 18x6x4 ins., 12 ins. in the ground for Cor. of Secs. 25, 30, 31 and 36, marked with 1 notch S. and 5 notches on N. edges, from which:

A spruce, 12 ins. diam., bears N38°15'E, 36 lks. dist., marked T24N R25W S30 BT.

A spruce, 12 ins. diam., bears S66°30'E, 51 lks. dist., marked T34N R25W S31 BT.

A spruce, 12 ins. diam., bears S30°30'W, 51 lks. dist., marked T34N R26W S36 BT.

A tamarack, 24 ins. diam., bears N84°W, 58 lks. dist., marked T34N R26W S25 BT.

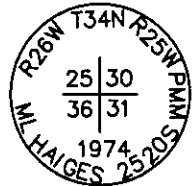
1974 Certified Corner Recordation by M. L. Haiges, Reg. No. 2520S: Found a stone in the ground with 1 notch on the south and 5 notches on the north sides of the stone. Also found the Northwest and Southeast bearing tree stumps. No scribing evident but bearings and distances to stone check. To perpetuate this corner the original stone location was replaced with a 2" galvanized pipe, 30" long, with 6" flange, buried 24" in the ground. Original stone turned over and placed next to the pipe. Marked as shown, from which:

A spruce, 8 ins. diam., bears N43°E, 31.5 ft. dist., scribed "RM".

A spruce, 12 ins. diam., bears S19°E, 25.1 ft. dist., scribed "RM".

A spruce, 14 ins. diam., bears S44°W, 236.9 ft. dist., scribed "RM".

A fir, 10 ins. diam., bears N31°W, 31.5 ft. dist., scribed "RM".



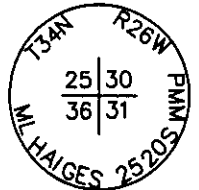
Found: A 2 in. diam. galvanized iron pipe, 3 ins. above ground, firmly set, with a 2 1/2 in. diam. brass cap marked as shown, from which:

A spruce, 20 ins. diam., bears N43°E, 31.4 ft. dist., marked with a healed face.

A spruce, 16 ins. diam., bears S19°E, 25.6 ft. dist., marked with a healed face.

A spruce, 20 ins. diam., bears S44°W, 37.3 ft. dist., with visible ax marks.

A fir, 15 ins. diam., bears N31°W, 39.2 ft. dist., marked with a healed face.



The cap was marked incorrectly so I remark the cap as shown. Painted red the scribed faces and 6 in. red bands around bearing trees. Replace the Land Survey Monument signs.

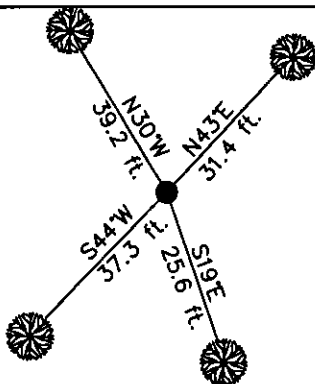
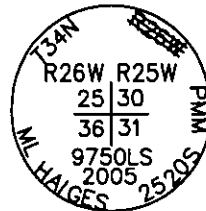
Date of Fieldwork: 9/13/2005

Survey crew: Tom Hommel

Magnetic declination: 20° East assumed

Equipment used: Hand compass and loggers tape

U.S. Forest Service, Supervisors Office, 1101 Hwy. 2 West, Libby, MT 59923 (406) 293-6211



SKETCH OF CORNER

NOT TO SCALE

CERTIFICATION

I, Thomas M. Hommel 10800LS
certify the information shown herein is true and correct.

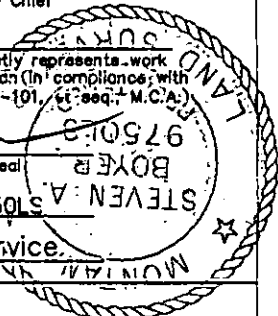
Signature Ground Party Chief

I, Steven A. Boyer
certify that this Corner Record correctly represents work performed by me or under my direction in compliance with the "Corner Recordation Act" (78-27-101, et seq., M.C.A.)

Signature of Surveyor & Seal

Date: 12/12/2005 Reg. No. 9750LS

Employer: U. S. Forest Service



Office of Clerk and Recorder, County of Lincoln This "corner

record" was filed for record

was noted on the cross-index

book No. _____

192561 BOOK: CCR CC&R'S PAGE: 10915 Pages: 1

STATE OF MONTANA LINCOLN COUNTY

RECORDED: 03/16/2006 10:36 KOI: CC&R'S

CORAL M. CUMMINGS CLERK AND RECORDER

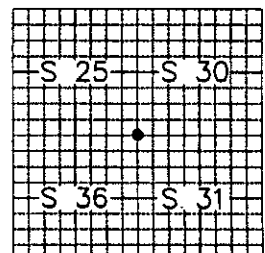
FEE: \$0.00

BY: [Signature]

TO: FILED

Cross Index No. V-01 T. 34N. R. 25W. P.M., MT

Adopted July 1, 1981, Montana Board of Professional Engineers & Land Surveyors



• corner this sheet

Also in 34-25

