

# CERTIFIED CORNER RECORDATION

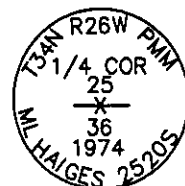
Corner S25  
S36 T 34 N. R. 26 W. P.M.M. LINCOLN County

I. Record: 1894 GLO Survey of the Subdivision and Meanders of Township 34 North, Range 26 West, by Frank L. Siezer and Abram L. Jaqueth: 39.72 chs. Set a fir post, 3 ft. long, 3 ins. square, 24 ins. in the ground for 1/4 Sec. Cor., marked 1/4 S on N. face from which:

- A fir, 22 ins. diam., bears S30°W, 18 lks. dist., marked 1/4 S BT.
- A fir, 24 ins. diam., bears N23°W, 28 lks. dist., marked 1/4 S BT.

1974 Certified Corner Recordation by M. L. Haiges, Reg. No. 2520S: No original G.L.O. evidence found for this corner. To perpetuate this corner, we set it at single proportional distances from northwest and the southwest sec. cors. os sec. 25. A 2 ins. diam. galv. pipe, 30 ins. long, with 6 in. flanges, buried in the ground, mkd. as shown: Establish two new bearing trees:

- A pine, 6 ins. diam., bears N42°E, 14.8 ft. dist., scribed "RM".
- A spruce, 6 ins. diam., bears S70°E, 21.9 ft. dist., scribed "RM".



1994 Certified Corner Recordation by Alvah F. Hughes, Reg. No. 7322LS: Found: A 2 in. diam. iron pipe, 4 ins. above ground, firmly set, with 2 3/4 in. diam brass cap, marked as shown above, from which:

- A pine, 9 ins. diam., bears N44°E, 15.1 ft. dist., marked with a healed face.
- A spruce, 15 ins. diam., bears S74°E, 22.1 ft. dist., marked with a healed face.

No original evidence found.

Establish two new bearing trees:

- A fir, 5 ins. diam., bears S4°E, 5.3 ft. dist., marked "X" BT.
- A spruce, 12 ins. diam., bears N76°E, 13.2 ft. dist., marked 1/4 S25 BT.

Painted a red band around the bearing trees and attached Land Survey Monument and Bearing Tree signs.  
Magnetic Declination 20°East

Found: A 2 in. daim. galvanized iron pipe, 3 ins. above ground, firmly set, with a 2 1/2 in. diam. brass cap marked as shown, from which:

- A fir, 5 ins. diam., bears S4°E, 5.3 ft. dist., marked with a healed face.
- A pine, 8 ins. diam., bears N42°E, 15.2 ft. dist., no visible marks.
- A spruce, 12 ins. diam., bears N76°E, 13.2 ft. dist., marked 1/4 S25 BT.
- A spruce, 16 ins. diam., bears S70°E, 22.3 ft. dist., marked with a healed face.



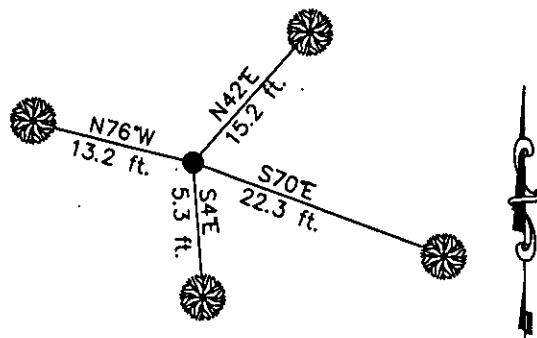
Date of Fieldwork: 9/13/2005

Survey crew: Tom Hommel

Magnetic declination: 20° East assumed

Equipment used: Hand compass and loggers tape

U.S. Forest Service, Supervisors Office, 1101 Hwy. 2 West, Libby, MT 59923 (406) 293-6211



SKETCH OF CORNER

NOT TO SCALE

## CERTIFICATION

I, Thomas M. Hommel 10800LS  
certify the information shown herein is true and correct.

Signature Ground Party Chief

Steven A. Boyer

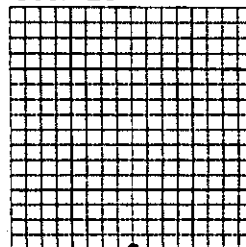
I, Steven A. Boyer  
certify that this Corner Record correctly represents work performed by me or under my direction in compliance with the "Corner Recordation Act" (70-22-101, et seq., M.C.A.)

Signature of Surveyor & Seal

Date: 12/12/2005 Reg. No. 79750LS

Employer: U. S. Forest Service

Sec. 25



• corner this sheet

Office of Clerk and Recorder, County of Lincoln This "corner

record" was filed for

192560 BOOK: CCR CC&R'S PAGE: 10914 Pages: 1

was noted on the cro

STATE OF MONTANA LINCOLN COUNTY

book No.

RECORDED: 03/16/2006 10:35 KOI: CC&R'S

CORAL M. CUMMINGS CLERK AND RECORDER

FEE: \$0.00

BY: James A. Boyer

TO: FILED

Cross Index No. V-23 T. 34N.R. 26W. P.M., MT

Adopted July 1, 1981, Montana Board of Professional Engineers & Land Surveyors

