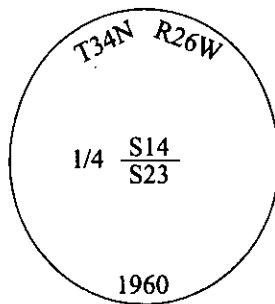


- CERTIFIED CORNER RECORDATION -

Corner 1/4 Secs. 14 & 23 T. 34N R. 26W P.M., MT Lincoln County

I. 1894 G.L.O. Record by Frank L. Sizer et. al.: Set a post, 3 ft. long, 3 ins. square, 24 ins. in the ground, for 1/4 sec. cor. mkd. "1/4 S" on N. Face. Established two bearing trees.

1967 B.L.M. Remonumentation by Woodrow E. Damm et. al.: The 1/4 sec. cor. of secs. 14 and 23, as determined from the remains of the original N.W. bearing tree. At the corner point, set an iron post, 30 ins. long, 2 1/4 ins. diam., 24 ins. in the ground, with brass cap mkd. as shown.



Established two new bearing trees and raise a mound of stone, 3 ft. diam., around the iron post.

1979 Certified Corner Recordation, Certificate of Survey No. 750, by Thomas C. Hill, 5612S: Found a 2 1/2" iron pipe with B.L.M. brass cap, mkd. as shown.

from which:

- A 14" pine, bears S53°W, 18 lks.
- A 15" pine, bears N50 1/2°W, 28 lks.

II. Found a 2 1/2 in. diam. pipe, firmly set, protruding 2 ins. above ground, with a 3 1/4 in. diam. B.L.M. brass cap mkd. as shown.

from which:

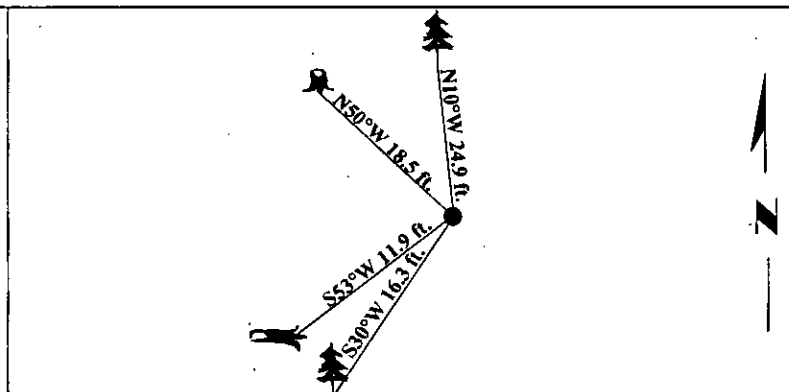
- A down pine, 14 ins. diam., bears S53°W, 11.9 ft. dist., with visible scribe. (BLM-record)
- A pine stump, 12 ins. diam., bears N50°W, 18.5 ft. dist., no visible scribe. (BLM-record)

III. Established two new bearing trees:

- A spruce, 10 ins. diam., bears S30°W, 16.3 ft. dist., mkd. "1/4 S23 BT".
- A spruce, 9 ins. diam., bears N10°W, 24.9 ft. dist., mkd. "1/4 S14 BT".

Painted bearing trees and attached Land Survey Monument and Bearing Tree signs.

Magnetic Declination: 20° East



SKETCH OF CORNER

CERTIFICATION

I: Rex O. Rice

certify the information shown herein is true and correct.

Rex O. Rice

I, Steven A. Boyer

certify that this Corner Record correctly represents work performed by me under my direction in compliance with the "Corner Recordation Act" (70-22-101, et seq., M.C.A.)

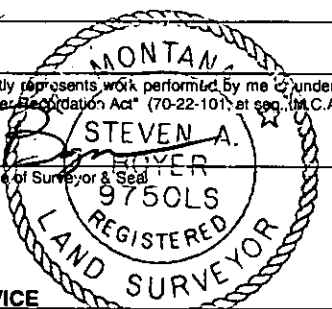
Steven A. Boyer

Signature of Surveyor & Seal

Date: 11/18/98

Reg. No.: 9750LS

Employer: U.S. FOREST SERVICE



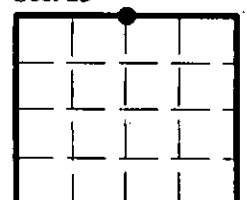
Sec. 23

Office of Clerk and Recorder, County of Lincoln. This "corner record" was filed for

record on Mar 3, 1999 and was noted on the cross-index plat and is assigned page No. 10299

in book No. _____

Coral M. Cummins
County Official



● - corner this sheet

Cross Index No.

N-19

T. 34N

R.

26W

P.M., MT

