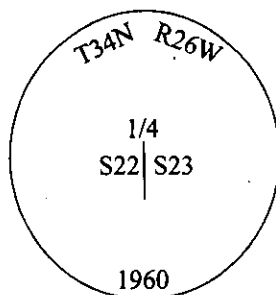


# - CERTIFIED CORNER RECORDATION -

Corner 1/4 Secs. 22 & 23 T. 34N R. 26W P.M., MT Lincoln County

I. 1894 G.L.O. Record by Frank L. Sizer et. al.: Set a post, 3 ft. long, 3 ins. square, 24 ins. in the ground, for 1/4 sec. cor. mkd. "1/4 S" on W. Face. Established two bearing trees.

1960 B.L.M. Remonumentation by David R. Cunningham et. al.: The 1/4 sec. cor. of secs. 22 and 23, as determined from the remains of the original bearing trees. At the corner point, set an iron post, 30 ins. long, 2 1/2 ins. diam., 26 ins. in the ground, in concrete, with brass cap mkd. as shown.



Established two new bearing trees and raise a mound of stone, 3 ft. base, 2 ft. high, W. of the iron post.

1979 Certified Corner Recordation, Certificate of Survey No. 750, by Thomas C. Hill, 5612S: Found iron pipe with B.L.M. brass cap, mkd. as shown.

from which:

- A 12" Fir, bears N59°31'W, 90 lks., healed face.
- A 10" Fir, bears S29°33'E, 84 lks., healed face.

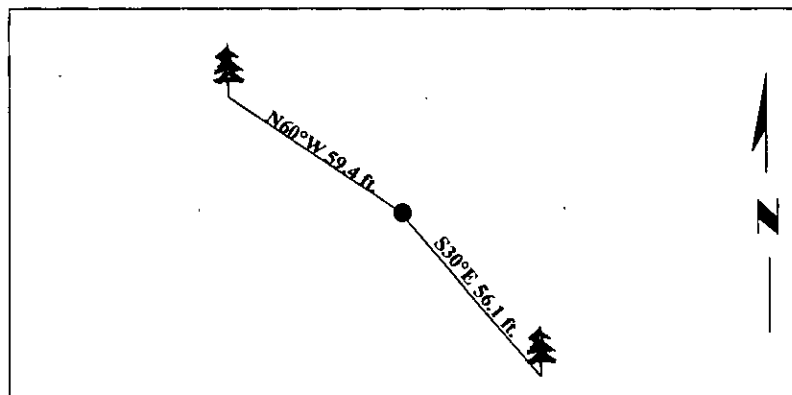
II. Found a 2 1/2 in. diam. pipe, firmly set, protruding 3 ins. above ground, with a 3 1/4 in. diam. brass cap mkd. as shown.

from which:

- A fir, 15 ins. diam., bears S30°E, 56.1 ft. dist., with a healed face. (BLM-record)
- A fir, 14 ins. diam., bears N60°W, 59.4 ft. dist., with a healed face. (BLM-record)

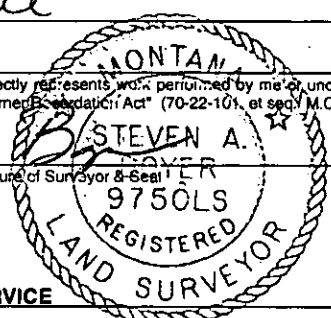
III. Painted bearing trees and attached Land Survey Monument and Bearing Tree signs.

Magnetic Declination: 20° East



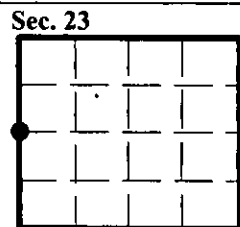
**SKETCH OF CORNER**

CERTIFICATION	
I. <u>Rex O. Rice</u>	certify the information shown herein is true and correct.
<i>Rex O. Rice</i>	
I. <u>Steven A. Boyer</u>	certify that this Corner Record correctly represents work performed by me or under my direction in compliance with the "Corner Recordation Act" (70-22-101, et seq. M.C.A.)
<i>Steven A. Boyer</i>	
Signature of Surveyor & Seal	
Date: <u>11/16/98</u>	
Reg. No.: <u>9750LS</u>	
Employer: <u>U.S. FOREST SERVICE</u>	



Office of Clerk and Recorder, County of Lincoln. This "corner record" was filed for record on Mar 3, 1999 and was noted on the cross-index plat and is assigned page No. 10298 in book No. \_\_\_\_\_

*Coral M. Cumming By D.B.*  
County Official



● - corner this sheet

