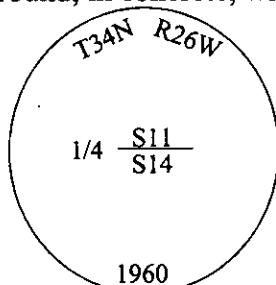


- CERTIFIED CORNER RECORDATION -

Corner 1/4 Secs. 11 & 14 T. 34N R. 26W P.M., MT Lincoln County

I. 1894 G.L.O. Record by Frank L. Sizer et. al.: Set a quartzite stone, 12x10x8 ins., 8 ins. in the ground, for 1/4 sec. cor., marked "1/4" on N. face. Established two bearing trees.

1960 B.L.M. Remonumentation by David R. Cunningham et. al.: The 1/4 sec. cor. of secs. 11 and 14, as determined from the remains of the original bearing trees. At the corner point, set an iron post, 30 ins. long, 2 1/2 ins. diam., 26 ins. in the ground, in concrete, with brass cap mkd. as shown.



Established two new bearing trees and raise a mound of stone, 3 ft. base, 2 ft. high, N. of the iron post.

1984 Certified Corner Recordation by Jack H. Ninneman, 4661S: Found B.L.M. brass capped monument stamped as shown.

from which:

A 16" Douglas Fir (scribing overgrown), bears S40°54'E, 64 lks. dist., BT.

A 14" Douglas Fir (scribing overgrown), bears N30°43'W, 140 3/4 lks. dist., BT.

Set: A location poster on a 28" Pine stump, bears N72°E, 9.6 feet.

II. Found a 2 1/2 in. diam. pipe, firmly set, protruding 3 ins. above ground, with a brass cap mkd. as shown. Found a pile of stone, 3 ft. diam., North of monument.

from which:

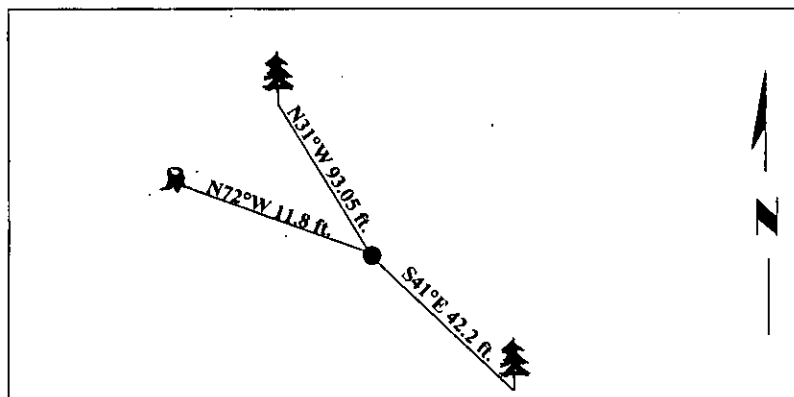
A fir, 15 ins. diam., bears S41°E, 42.2 ft. dist., with a healed face. (BLM-record)

A fir, 14 ins. diam., bears N31°W, 93.05 ft. dist., with a healed face. (BLM-record)

A stump, 28 ins. diam., bears N72°W, 11.8 ft. dist., with a healed face and a bearing tree tag attached. (GLO-record)

III. Painted bearing trees and attached Land Survey Monument and Bearing Tree signs.

Magnetic Declination: 20° East

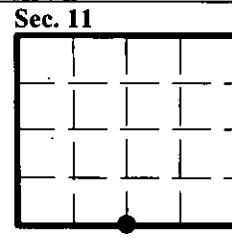


SKETCH OF CORNER

CERTIFICATION	
I. Rex O. Rice	certify the information shown herein is true and correct.
<i>Rex O. Rice</i>	
II. Steven A. Boyer	certify that this Corner Record correctly represents work performed by me or under my direction in compliance with the "Corner Recordation Act" (79-22-101, et seq., M.C.A.)
<i>Steven A. Boyer</i>	
Date: 11/10/98	Signature of Surveyor's Seal
Reg. No.: 9750LS	
Employer: U.S. FOREST SERVICE	

Office of Clerk and Recorder, County of Lincoln. This "corner record" was filed for record on Mar 3, 1999 and was noted on the cross-index plat and is assigned page No. 10297 in book No. _____

Coral M. Cummings By Deb
County Official



• - corner this sheet

