

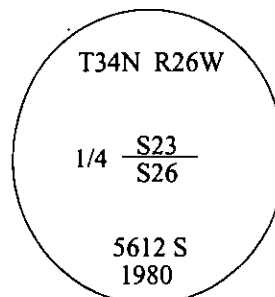
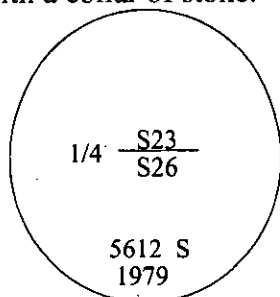
- CERTIFIED CORNER RECORDATION -

Corner	1/4	Secs.	23 & 26	T.	34N	R.	26W	P.M., MT	Lincoln	County
--------	-----	-------	---------	----	-----	----	-----	----------	---------	--------

I. 1894 G.L.O. Record by Frank L. Sizer et. al.: Set a post, 3.0 ft. long, 3.0 ins. square, 24 ins. in the ground, with "1/4 S" mkd. on N. face. Established two bearing trees.

1979 Certified Corner Recordation by Thomas C. Hill, 5612-S: No monument found and no accessories found. Set a 2 1/2 in. diam. brass cap, firmly in bedrock, mkd. as shown. Established two bearing trees.

1980 Certified Corner Recordation by Thomas C. Hill, 5612-S: No evidence of original monument and accessories found, found brass rock cap, stamped "5612S" as per C. of S. No. 748 & 750 and Corner Recordation Form, Book 1, Page 669. Position found to be in error, refer to correction C. of S. No. 748 & 750. At the corner point of the 1/4 sec. cor. of secs. 23 and 26, set by using single proportionate measurement, a 2 1/2 in. diam., 30 ins. long aluminum pipe, 8 ins. in the ground with aluminum cap mkd. as shown, with a collar of stone.



Established two new bearing trees.

Attached location poster to a 3.0 in. diam. larch, bears S36°W, 12.1 ft. dist. Attached bearing tree signs.

II. Found a 2 1/2 in. diam. brass cap, firmly set in bedrock, mkd. as shown.

from which:

A fir, 8 ins. diam., bears S69°E, 31.2 ft. dist., mkd. "1/4 S26 BT". (1980-record)

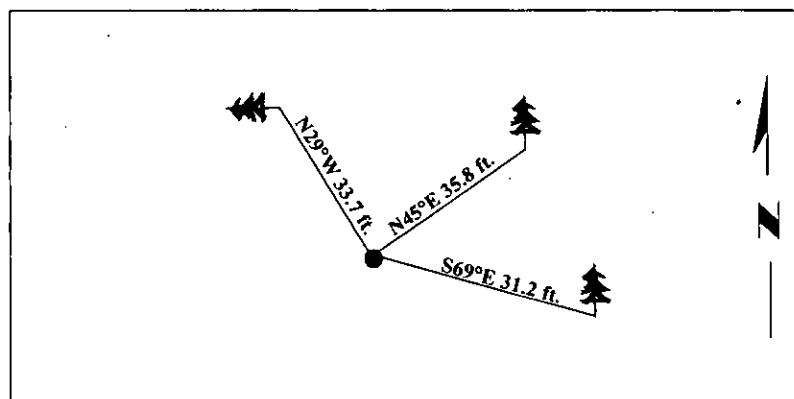
A fallen pine, 8 ins. diam., bears N29°W, 33.7 ft. dist., mkd. "1/4 S23 BT". (1980-record)

III. Established one new bearing tree:

A pine, 9 ins. bears N45°E, 35.8 ft. dist., mkd. "1/4 S23 BT".

Painted bearing trees and attached Land Survey Monument and Bearing Tree signs.

Magnetic Declination: 20° East



SKETCH OF CORNER

CERTIFICATION	
I, Joe McElmurry	
certify the information shown herein is true and correct.	
I, Steven A. Boyer	
certify that this Corner Record correctly represents work performed by me or under my direction in compliance with the "Corner Recordation Act" (70-22-101-1st sec., M.C.A.)	
Signature of Surveyor & Seal	
Date: 11/19/98	
Reg. No.: 9750LS	
Employer: U.S. FOREST SERVICE	

Office of Clerk and Recorder, County of Lincoln. This "corner record" was filed for record on 1-20-99 and was noted on the cross-index plat and is assigned page No. **10288** in book No. _____

County Official

