

# - CERTIFIED CORNER RECORDATION -

Corner SW 1/16 Sec. 23 T. 34N R. 26W P.M., MT Lincoln County

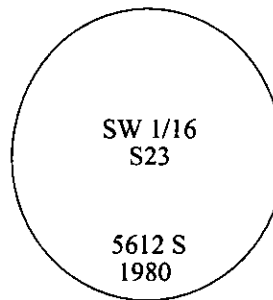
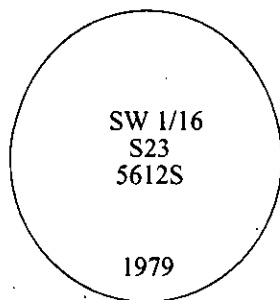
- I. 1979 Certified Corner Recordation by Thomas C. Hill, 5612-S: Set by survey, a 3 in. diam., 30 ins. long, aluminum pipe, 14 ins. in the ground, to bedrock, raise a mound of stone to secure pipe.

Established two bearing trees:

A larch, 7 ins. diam., bears S70°E, 14.6 ft. dist., mkd. "X" "BT".

A pine, 8 ins. diam., bears N13°36'W, 11.8 ft. dist., mkd. "SW 1/16 S23 BT".

1980 Certified Corner Recordation by Thomas C. Hill, 5612-S: Found the 1979 aluminum pipe, stamped "5612S" as per C. of S. No. 750 and Corner Recordation Form, Book 1, Page 689. Position found to be in error, refer to correction C. of S. No. 750. Reset a 2 1/2 in. diam., 30 ins. long aluminum pipe, 17 ins. in the ground, with aluminum cap mkd. as shown, with a collar of stone around pipe.



I used existing bearing trees with new bearings and distances.

Attached location poster to a 6.0 in. diam. pine, bears S87°W, 12.1 ft. dist. Attached bearing tree signs.

- II. Found a 2 1/2 in. diam., 30 ins. long aluminum pipe, protruding 13 ins. above the ground, mkd. as shown.

from which:

A larch, 8 ins. diam., bears S60°E, 16.5 ft. dist., mkd. "X" "BT". (1980-record)

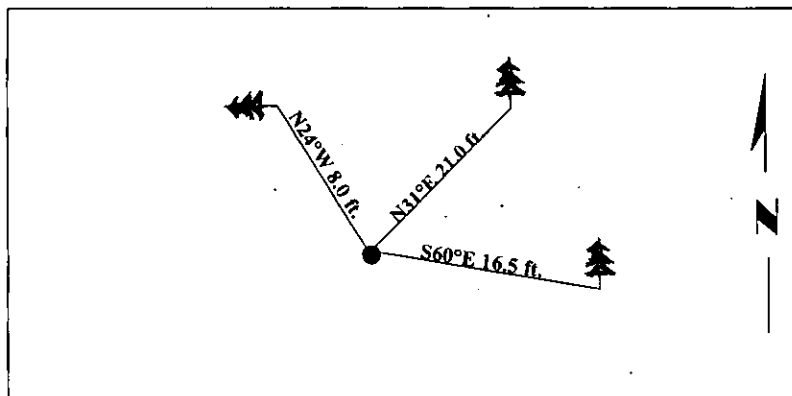
A fallen pine, 10 ins. diam., bears N24°W, 8.0 ft. dist., mkd. "SW 1/16 S23 BT". (1980-record)

- III. Established one new bearing tree:

A pine, 7 ins. bears N31°E, 21.0 ft. dist., mkd. "SW 1/16 S23 BT".

Painted bearing trees and attached Land Survey Monument and Bearing Tree signs.

Magnetic Declination: 20° East



SKETCH OF CORNER

## CERTIFICATION

I, Joe McElmurry

certify the information shown herein is true and correct.

I, Steven A. Boyer

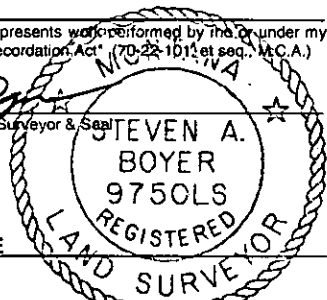
certify that this Corner Record correctly represents work performed by me or under my direction in compliance with the "Corner Recordation Act" (70-22-101 et seq., M.C.A.)

Steven A. Boyer  
Signature of Surveyor & Seal

Date: 11/19/98

Reg. No.: 9750LS

Employer: U.S. FOREST SERVICE



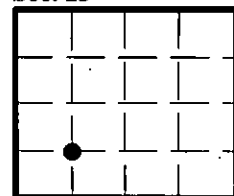
Sec. 23

Office of Clerk and Recorder, County of Lincoln. This "corner record" was filed for

record on 1-20-99 and was noted on the cross-index plat and is assigned page No. 10287

in book No. \_\_\_\_\_

Coral M. Cummings By DUB  
County Official



● - corner this sheet

