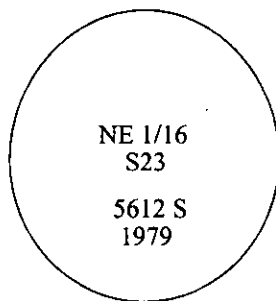


- CERTIFIED CORNER RECORDATION -

Corner NE 1/16 **Sec.** 23 **T.** 34N **R.** 26W **P.M., MT** **Lincoln** **County**

- I. 1979 Certified Corner Recordation by Thomas C. Hill, 5612-S: Set by survey, a 3 in. diam., 30 ins. long, aluminum pipe, 24 ins. in the ground, cap mkd. as shown, with a collar of stone.



Established two bearing trees:

- A larch, 8 ins. diam., bears N38°40'E, 20.0 ft. dist., mkd. "X" "BT".
A pine, 6 ins. diam., bears S42°04'W, 17.0 ft. dist., mkd. "NE 1/16 S23 BT".

- II. Found a 3 in. diam., 30 ins. long aluminum pipe, protruding 6 ins. above the ground, mkd. as shown, with a collar of stone.

from which:

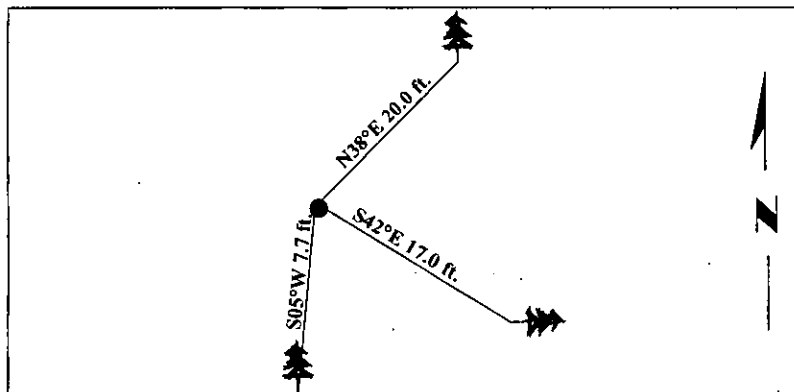
- A larch, 8 ins. diam., bears N38°E, 20.0 ft. dist., mkd. "X" "BT".
A pine stump and log, 6 ins. diam., bears S42°E, 17.0 ft. dist., mkd. "NE 1/16 S23 BT".

- III. Established one new bearing tree:

- A larch, 10 ins. diam., bears S05°W, 7.7 ft. dist., mkd. "NE 1/16 S23 BT".

Painted bearing trees and attached Land Survey Monument and Bearing Tree signs.

Magnetic Declination: 20° East

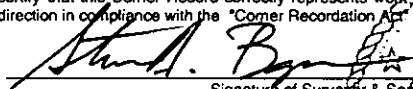


SKETCH OF CORNER

CERTIFICATION

I, Joe McElmurry
certify the information shown herein is true and correct.

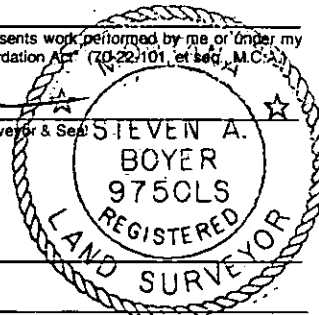
I, Steven A. Boyer
certify that this Corner Record correctly represents work performed by me or under my direction in compliance with the "Corner Recordation Act" (70-22-101, et seq., M.C.A.)


Signature of Surveyor & Seal

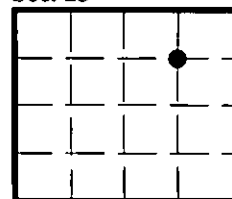
Date: 11/19/98

Reg. No.: 9750LS

Employer: U.S. FOREST SERVICE



Sec. 23



● - corner this sheet

Office of Clerk and Recorder, County of Lincoln. This "corner record" was filed for record on 1-20-99 and was noted on the cross-index plat and is assigned page No. 10286 in book No. _____.

Coral M. Cumming By deb
County Official

