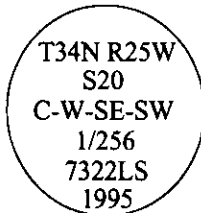


CERTIFIED CORNER RECORDATION

Corner C-W-SE-SW Sec. 20 T. 34N R. 25W P.M., MT Lincoln County
1/256

- I. No previous history.
- II. No evidence found.
- III. At the position determined by survey, set a 30 ins. long, 3/4 in. diam. alum. rod, 27 ins. in the ground, with a 3 1/4 ins. diam. alum. cap mkd.:

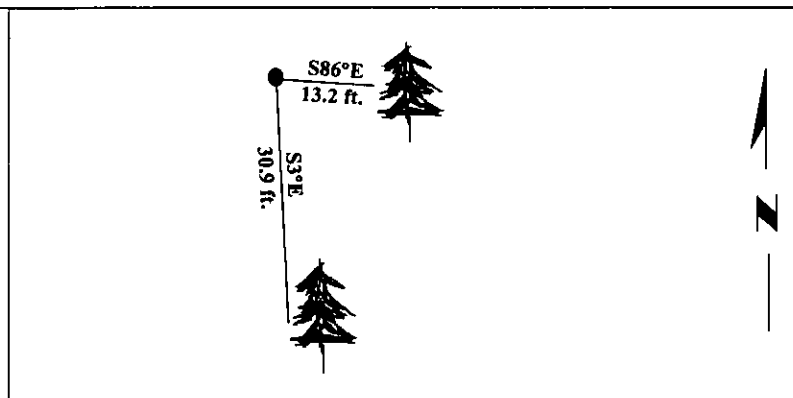


from which:

A larch, 10 ins. diam., bears S86°E, 13.2 ft. dist., mkd. "C-W-SE-SW 1/256 S20 BT".
A fir, 7 ins. diam., bears S3°E, 30.9 ft. dist., mkd. "C-W-SE-SW 1/256 S20 BT".

Painted bearing trees and attached Land Survey Monument and Bearing Tree signs.
Set a steel guard post South, 3.0 ft. dist. from corner, with Land Survey Monument and Property Boundary decals.

Magnetic Declination: 20° East.

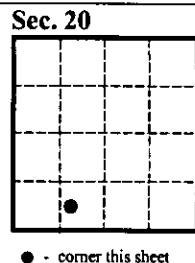


SKETCH OF CORNER

CERTIFICATION	
I. <u>Mark Federman</u>	certify the information shown herein is true and correct.
II. <u>Alvah F. Hughes</u>	certify that this Corner Record correctly represents work performed by me or under my direction in compliance with the "Corner Recordation Act" (70-22-101, et seq., M.C.A.).
Signature of Surveyor & Seal	
Date: <u>1/22/96</u>	
Reg. No.: <u>7322LS</u>	
Employer: <u>U.S. FOREST SERVICE</u>	

Office of Clerk and Recorder, County of LINCOLN. This "corner record" was filed for record on JULY 29, 1997 was noted on the cross-index plat and is assigned page No. 9804 in book No.

CORAL M. CUMMINGS By DLB
County Official



• - corner this sheet

100-100000-100000

100-100000-100000

100-100000-100000

100-100000-100000