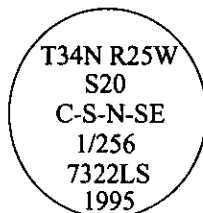


# CERTIFIED CORNER RECORDATION

Corner C-S-N-SE 1/256 Sec. 20 T. 34N R. 25W P.M., MT Lincoln County

- I. No previous history.
- II. No evidence found.
- III. At the position determined by survey, set a 30 ins. long, 3/4 in. diam. alum. rod, 26 ins. in the ground, with a 3 1/4 ins. diam. alum. cap mkd.:

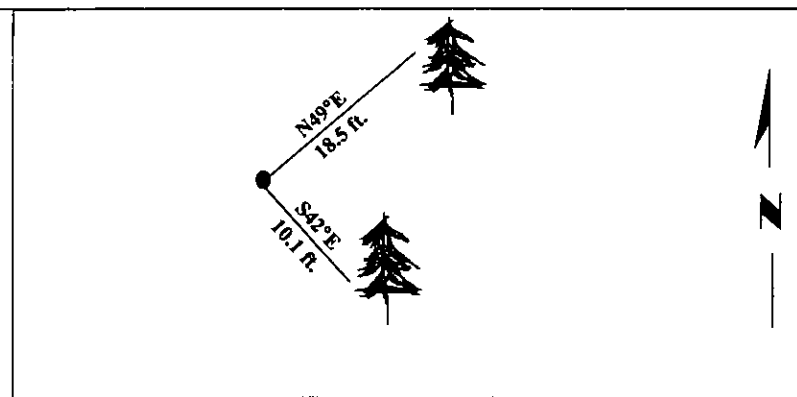


from which:

A larch, 14 ins. diam., bears N49°E, 18.5 ft. dist., mkd. "C-S-N-SE 1/256 S20 BT".  
A spruce, 12 ins. diam., bears S42°E, 10.1 ft. dist., mkd. "C-S-N-SE 1/256 S20 BT".

Painted bearing trees and attached Land Survey Monument and Bearing Tree signs.  
Set a steel guard post North, 3.0 ft. dist. from corner, with Land Survey Monument and Property Boundary decals.

Magnetic Declination: 20° East.

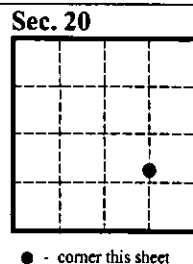


SKETCH OF CORNER

CERTIFICATION	
I. <u>Mark Federman</u> certify the information shown herein is true and correct.	
II. <u>Alvah F. Hughes</u> certify that this Corner Record correctly represents work performed by the or under my direction in compliance with the "Corner Recordation Act" (70-22-101, et seq., M.C.A.).	
Date:	<u>1/22/96</u>
Reg. No.:	<u>7322LS</u>
Employer:	<u>U.S. FOREST SERVICE</u>

Office of Clerk and Recorder, County of LINCOLN. This "corner record" was filed for record on JULY 29, 1997 was noted on the cross-index plat and is assigned page No. 980.3 in book No. \_\_\_\_\_

CORAL M. CUMMINGS By DLB  
County Official



• - corner this sheet

LINCOLN

1944

CORAL M. CUMMINGS

1944