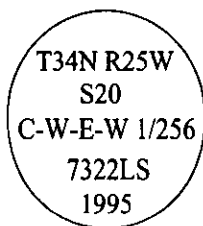


# CERTIFIED CORNER RECORDATION

Corner C-W-E-W 1/256 Sec. 20 T. 34N R. 25W P.M., MT Lincoln County

- I. No previous history.
- II. No evidence found.
- III. At the position determined by survey, set a 30 ins. long, 3/4 in. diam. alum. rod, 29 ins. in the ground, with a 3 1/4 ins. diam. alum. cap mkd.:

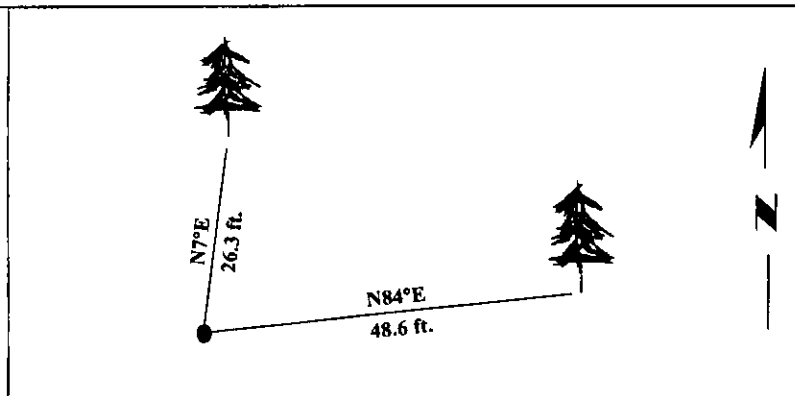


from which:

- A fir, 14 ins. diam., bears N7°E, 26.3 ft. dist., mkd. "X BT".
- A fir, 11 ins. diam., bears N84°E, 48.6 ft. dist., mkd. "C-W-E-W 1/256 S20 BT".

Painted bearing trees and attached Land Survey Monument and Bearing Tree signs.  
Set a steel guard post East, 3.0 ft. dist. from corner, with Land Survey Monument and Property Boundary decals.

Magnetic Declination: 20° East.

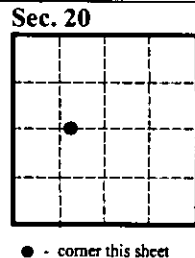


SKETCH OF CORNER

CERTIFICATION	
i. <u>Mark Federman</u>	certify the information shown herein is true and correct.
ii. <u>Alvah F. Hughes</u>	certify that this Corner Record correctly represents work performed by me or under my direction in compliance with the "Corner Recordation Act", (70-22-101, et seq., M.C.A.)
Date:	<u>1/22/96</u>
Reg. No.:	<u>7322LS</u>
Employer:	<u>U.S. FOREST SERVICE</u>

Office of Clerk and Recorder, County of LINCOLN. This "corner record" was filed for record on JULY 29, 1997 was noted on the cross-index plat and is assigned page No. 9800 in book No.                     

**CORAL M. CUMMINGS** By DeB  
County Official



LINCOLN

1911

1911

CORAL M. CUMMINGS