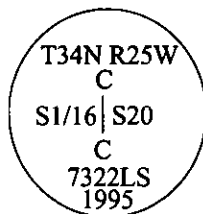


CERTIFIED CORNER RECORDATION

Corner C-S 1/16 Sec. 20 T. 34N R. 25W P.M., MT Lincoln County

- I. No previous history.
- II. No evidence found.
- III. At the position determined by survey, set a 30 ins. long, 3/4 in. diam. alum. rod, 27 ins. in the ground, with a 3 1/4 ins. diam. alum. cap mkd.:



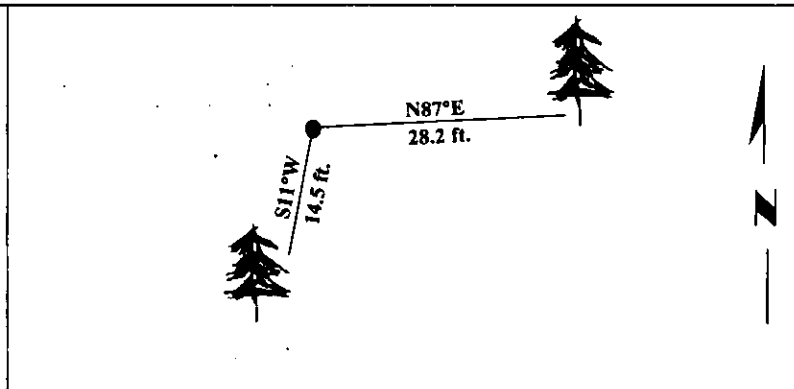
from which:

A larch, 7 ins. diam., bears N87°E, 28.2 ft. dist., mkd. "C-S1/16 S20 BT".
A larch, 12 ins. diam., bears S11°W, 14.5 ft. dist., mkd. "C-S1/16 S20 BT".

Painted bearing trees and attached Land Survey Monument and Bearing Tree signs.

Set a steel guard post north of corner, with Land Survey Monument and Property Boundary decals.

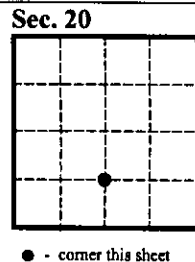
Magnetic Declination: 20° East.



SKETCH OF CORNER

CERTIFICATION	
i. Mark Federman	certify the information shown herein is true and correct.
ii. Alvah F. Hughes	certify that this Corner Record correctly represents work performed by me for under my direction in compliance with the "Corner Recordation Act" (70-22-101, et seq., M.C.A.)
Date:	1/22/96
Reg. No.:	7322LS
Employer:	U.S. FOREST SERVICE

Office of Clerk and Recorder, County of LINCOLN. This "corner record" was filed for record on JULY 29, 1997 was noted on the cross-index plat and is assigned page No. 9799 in book No. **CORAL M. CUMMINGS** *By DUB*
County Official



• - corner this sheet

10

1000

1000

1000

1000

1000, 1000

1000, 1000