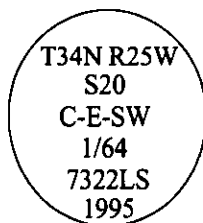


CERTIFIED CORNER RECORDATION

Corner C-E-SW 1/64 Sec. 20 T. 34N R. 25W P.M., MT Lincoln County

- I. No previous history.
- II. No evidence found.
- III. At the position determined by survey, set a 30 ins. long, 3/4 in. diam. alum. rod, 17 ins. in the ground, with a 3 1/4 ins. diam. alum. cap mkd.:



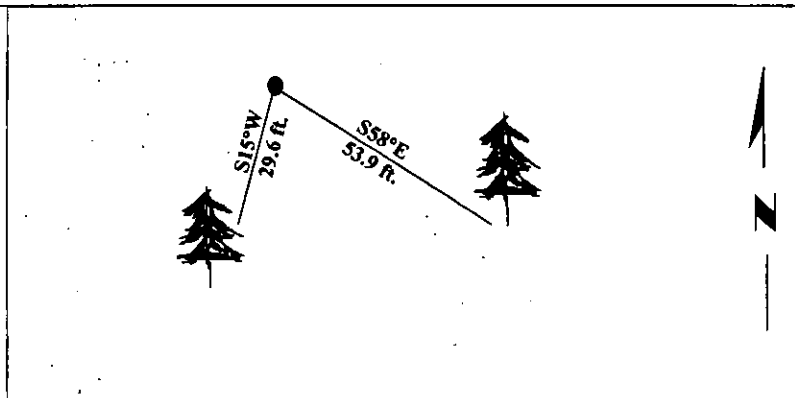
from which:

- A fir, 20 ins. diam., bears S58°E, 53.9 ft. dist., mkd. "C-E-SW 1/64 S20 BT".
- A spruce, 7 ins. diam., bears S15°W, 29.6 ft. dist., mkd. "X BT".

Painted bearing trees and attached Land Survey Monument and Bearing Tree signs.

Set a steel guard post South, 3.0 ft. dist. from corner, with Land Survey Monument and Property Boundary decals.

Magnetic Declination: 20° East.

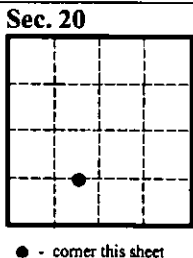


SKETCH OF CORNER

CERTIFICATION	
I. Mark Federman	certify the information shown herein is true and correct.
<i>Mark Federman</i>	
II. Alvah F. Hughes	certify that this Corner Record correctly represents work performed by me or under my direction in compliance with the "Corner Recordation Act" (70-22-101, et seq., M.C.A.)
<i>Alvah F. Hughes</i>	
Signature of Surveyor & Seal	
Date:	1/22/96
Reg. No.:	7322LS
Employer:	U.S. FOREST SERVICE

Office of Clerk and Recorder, County of **LINCOLN**. This "corner record" was filed for record on **JULY 29, 1997**, was noted on the cross-index plat and is assigned page No. **9798**, in book No. _____

CORAL M. CUMMINGS *By DeB*
County Official



• - corner this sheet

