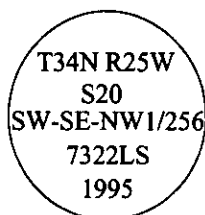


CERTIFIED CORNER RECORDATION

Corner SW-SE-NW 1/256 Sec. 20 T. 34N R. 25W P.M., MT Lincoln County

- I. No previous history.
- II. No evidence found.
- III. At the position determined by survey, set a 30 ins. long, 3/4 in. diam. alum. rod, 23 ins. in the ground, with a 3 1/4 ins. diam. alum. cap mkd.:



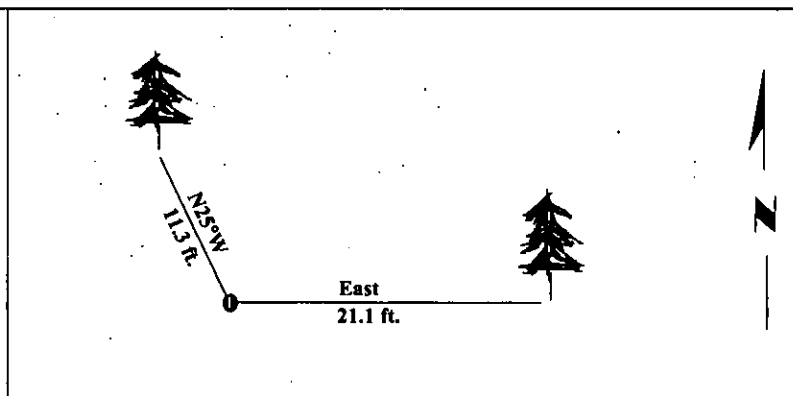
from which:

- A fir, 9 ins. diam., bears East, 21.1 ft. dist., mkd. "SW-SE-NW 1/256 BT".
- A fir, 10 ins. diam., bears N25°W, 11.3 ft. dist., mkd. "X BT".

Painted bearing trees and attached Land Survey Monument and Bearing Tree signs.

Set a steel guard post West, 3.0 ft. dist. from corner, with Land Survey Monument and Property Boundary decals.

Magnetic Declination: 20° East.

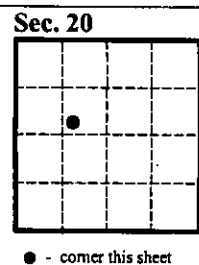


SKETCH OF CORNER

CERTIFICATION	
I. Mark Federman	certify the information shown herein is true and correct.
<i>Mark Federman</i>	
II. Alvah F. Hughes	certify that this Corner Record correctly represents work performed by me or under my direction in compliance with the "Corner Recordation Act", (70-22-101, et seq., M.C.A.)
<i>Alvah F. Hughes</i>	
Date:	1/22/96
Reg. No.:	7322LS
Employer:	U.S. FOREST SERVICE

Office of Clerk and Recorder, County of **LINCOLN**. This "corner record" was filed for record on **JULY 29, 1997**, was noted on the cross-index plat and is assigned page No. **9797**, in book No. **CORAL M. CUMMINGS**, By **DUB**

County Official



• - corner this sheet

LINCOLN