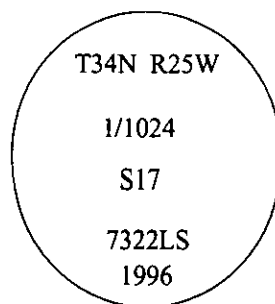


CERTIFIED CORNER RECORDATION

Corner 1/1024 Sec. 17 T. 34N R. 25 W P.M., MT Lincoln County

- I. No previous history.
- II. Nothing found.
- III. At the corner position, as determined by survey, drove an 18 in. long, 3/4 in. diam. alum. rod, into the top of a fir stump, which I had cut close to ground level, with a 3 1/4 in. diam. alum. cap, mkd. as shown:



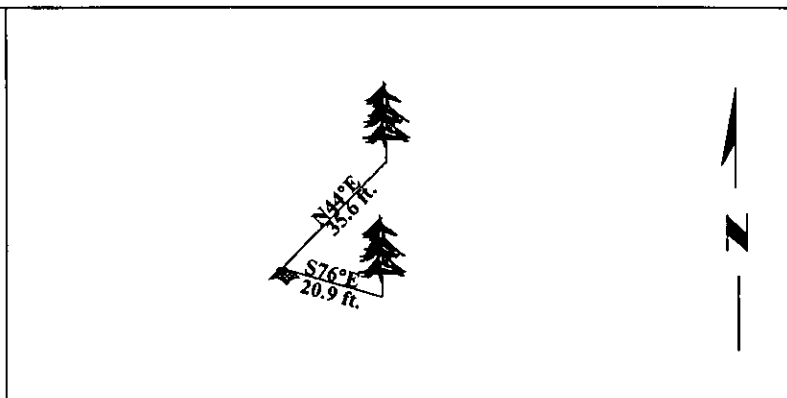
Establish two bearing trees:

- A fir, 11 ins. diam., bears N44°E, 35.6 ft. dist., scribed "1/1024 S17 BT".
- A fir, 13 ins. diam., bears S76°E, 20.9 ft. dist., scribed "1/1024 S17 BT".

Painted bearing trees and attached Land Survey Monument and Bearing Tree signs.

Set a 6 ft. steel guard post with Land Survey Monument and Property Boundary decals.

Magnetic Declination: 20° East.



SKETCH OF CORNER

CERTIFICATION	
I. <u>Thomas M. Hommel</u>	certify the information shown herein is true and correct.
I. <u>Alvah F. Hughes</u>	certify that this Corner Record correctly represents work performed by me or under my direction in compliance with the "Corner Recordation Act" 170-22-101, et seq., M.C.A.
Date: <u>12/31/96</u>	Signature of Surveyor & Seal
Reg. No.: <u>7322LS</u>	
Employer: <u>U.S. FOREST SERVICE</u>	

Office of Clerk and Recorder, County of LINCOLN. This "corner record" was filed for record on FEB 3, 1997 and was noted on the cross-index plat and is assigned page No. 9161, in book No. .
CORAL M. CUMMINGS County Official

