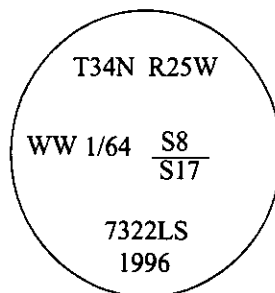


# CERTIFIED CORNER RECORDATION

Corner W-W 1/64 Sec. 17 T. 34N R. 25 W P.M., MT Lincoln County

- I. No previous history.
- II. Nothing found.
- III. At the corner position as determined by survey, set a 30 in. long, 3/4 in. diam. alum. rod, with a 3 1/4 in. diam. alum. cap set flush with ground, mkd. as shown:



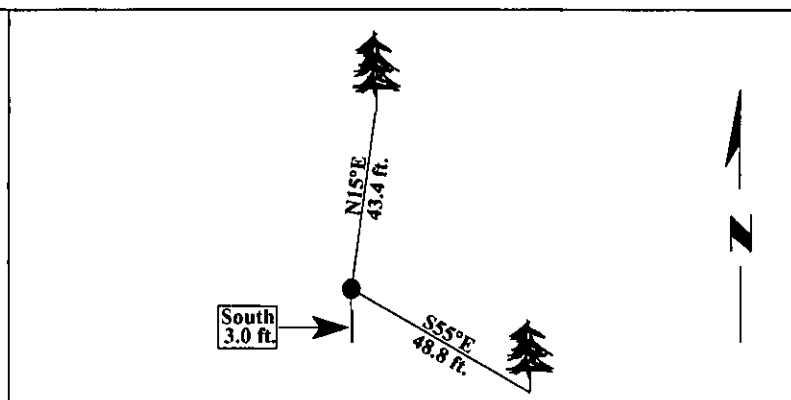
Established two bearing trees:

- A larch, 17 ins. diam., bears N15°E, 43.4 ft. dist., scribed "W-W 1/64 S8 BT".
- A fir, 9 ins. diam., bears S55°E, 48.8 ft. dist., scribed "W-W 1/64 S17 BT".

Painted bearing trees and attached Land Survey Monument and Bearing Tree signs.

Set a 6 ft. steel guard post, South, 3 ft., with Land Survey Monument and Property Boundary decals.

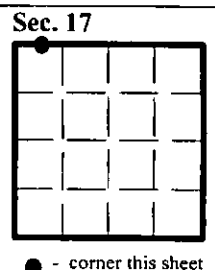
Magnetic Declination: 20° East.



SKETCH OF CORNER

CERTIFICATION	
I. <u>Thomas Hommel</u>	certify the information shown herein is true and correct.
<i>Thomas Hommel</i>	
I. <u>Alvah F. Hughes</u>	certify that this Corner Record correctly represents work performed by me or under my direction in compliance with the "Corner Recordation Act" (70-22-101, et seq., M.C.A.)
<i>Alvah F. Hughes</i>	
Date: <u>12/31/96</u>	Signature of Surveyor & Seal
Reg. No.: <u>7322LS</u>	
Employer: <u>U.S. FOREST SERVICE</u>	

Office of Clerk and Recorder, County of LINCOLN. This "corner record" was filed for record on FEB 3, 1997 and was noted on the cross-index plat and is assigned page No. 9159, in book No. CORAL M. CUMMINGS *Sy D/B*  
County Official





1954

1955

1956

1957