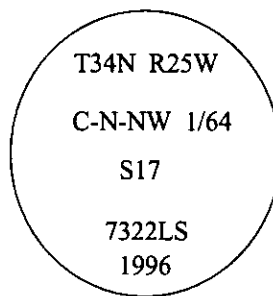


# CERTIFIED CORNER RECORDATION

Corner C-N-NW 1/64 Sec. 17 T. 34N R. 25 W P.M., MT Lincoln County

- I. 1980 Certificate of Survey no. 777 by D. K. Marquardt, registration no. 2989 ES: Set a 5/8 in. diam. rebar for C-N-NW 1/64 corner of sec. 17.
- II. Found a 5/8 in. diam. rebar.
- III. As determined by survey, I accept the position of the found rebar, set a 30 in. long, 3/4 in. diam. alum. rod, 28 ins. in the ground, with a 3 1/4 in. diam. alum. cap mkd. as shown:



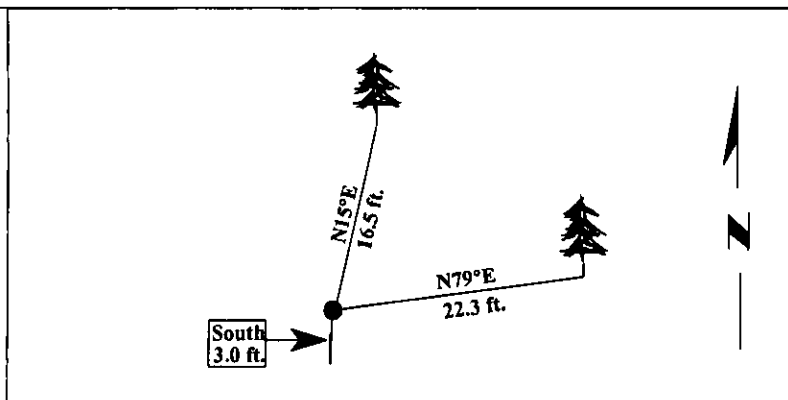
Establish two bearing trees:

- A fir, 16 ins. diam., bears N15°E, 16.5 ft. dist., scribed "C-N-NW 1/64 S17 BT".
- A fir, 16 ins. diam., bears N79°E, 22.3 ft. dist., scribed "C-N-NW 1/64 S17 BT".

Painted bearing trees and attached Land Survey Monument and Bearing Tree signs.

Set a 6 ft. steel guard post, South, 3 ft., with Land Survey Monument and Property Boundary decals.

Magnetic Declination: 20° East.

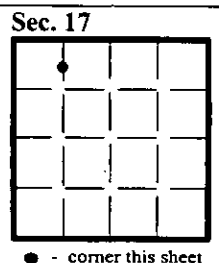


SKETCH OF CORNER

CERTIFICATION	
I, <u>Thomas Hommel</u>	certify the information shown herein is true and correct.
I, <u>Alvah F. Hughes</u>	certify that this Corner Record correctly represents work performed by me or under my direction in compliance with the "Corner Recordation Act" (70-22-101, et seq., M.C.A.)
Date: <u>12/31/96</u>	Signature of Surveyor & Seal
Reg. No.: <u>7322LS</u>	
Employer: <u>U.S. FOREST SERVICE</u>	

Office of Clerk and Recorder, County of LINCOLN. This "corner record" was filed for record on FEB 3, 1997 and was noted on the cross-index plat and is assigned page No. 9157, in book No. \_\_\_\_\_.

CORAL M. CUMMINGS  
County Official



● - corner this sheet

