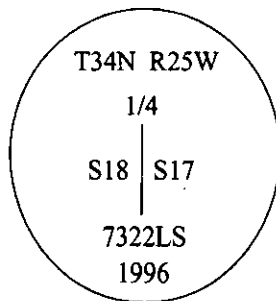


# CERTIFIED CORNER RECORDATION

Corner 1/4 Secs. 17 & 18 T. 34N R. 25 W P.M., MT Lincoln County

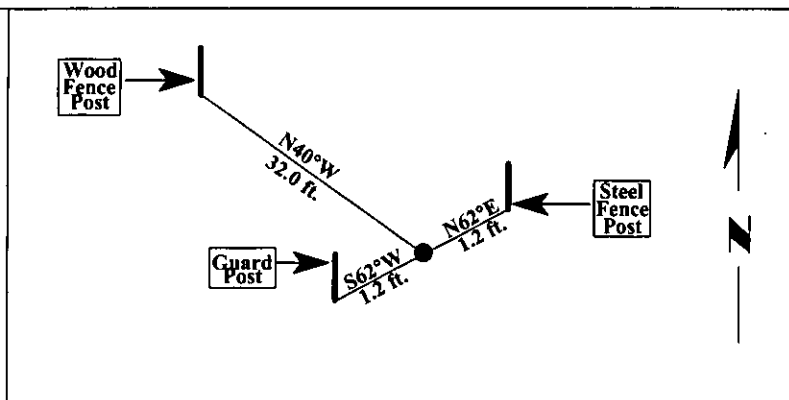
- I. 1894 G.L.O. Original record by Frank L. Sizer et. al.: Corner position falls in one foot of water. Set a wooden post, 4 ft. long, 4 ins. square, 24 ins. in the ground for 1/4 sec. cor., mkd. "1/4" on West face. Pits impractical and the ground will not support a mound of stone.
- II. No evidence found, as corner falls in a swampy pasture.
- III. At the corner position, as determined by survey, set a 5/8 in. diam. rod, 6 ft. in the ground, with a 3 1/4 in. diam. alum. cap mkd. as shown:



From which:

- A steel fence post, bears N62°E, 1.3 ft. dist.
- A 6 ft. steel guard post, bears S62°W, 1.2 ft. dist., with Land Survey Monument decal affixed.
- A wooden fence post, bears N40°W, 32.0 ft. dist., with BT tag.

Magnetic Declination: 20° East.



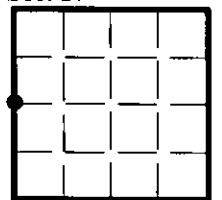
SKETCH OF CORNER

CERTIFICATION	
I. <u>Thomas Hommel</u>	certify the information shown herein is true and correct.
I. <u>Alvah F. Hughes</u>	certify that this Corner Record correctly represents work performed by me or under my direction in compliance with the "Corner Recordation Act" (70-22-101, et seq., M.C.A.)
Date: <u>12/29/96</u>	Signature of Surveyor: <u>Alvah F. Hughes</u>
Reg. No.: <u>7322LS</u>	
Employer: <u>U.S. FOREST SERVICE</u>	

Office of Clerk and Recorder, County of LINCOLN. This "corner record" was filed for record on FEB 3, 1997 and was noted on the cross-index plat and is assigned page No. 9154, in book No. CORAL M. CUMMINGS

County Official B. J. D/B

Sec. 17



• - corner this sheet

Cross Index No. L-5 T. 34N R. 25W P.M., MT

