

CERTIFIED CORNER RECORDATION

Corner 1/4 Secs. 19 & 20 T. 34N R. 25W P.M., MT Lincoln County

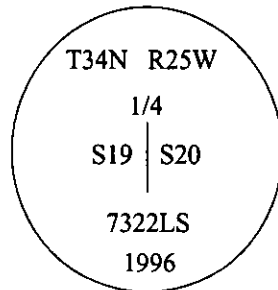
- I. 1894 G.L.O. Original record by Frank L. Sizer et. al.: Set a wooden post, 3 ft. long, 3 ins. square, 24 ins. in the ground, for 1/4 Sec. Cor., mkd. "1/4 S" on W. face.

Established two bearing trees:

A larch, 12 ins. diam., bears S38°30'E, 31 lks. dist., scribed "1/4 S BT".
A larch, 14 ins. diam., bears N27°15'W, 24 lks. dist., scribed "1/4 S BT".

- II. No evidence found, as corner position falls in center of county road.

- III. At the corner position, as determined by survey, set a 30 in. long, 2 1/2 in. diam. alum. pipe, 6 in. below the surface of the road, with a 3 1/4 in. alum. cap, mkd. as shown:

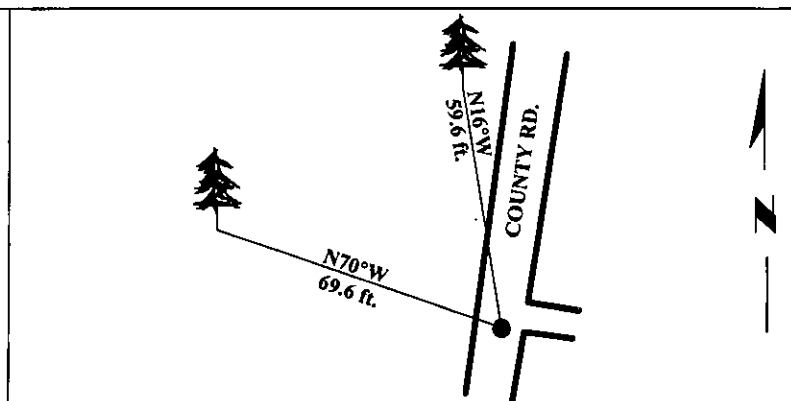


Established two new bearing trees:

A fir, 9 ins. diam., bears N16°W, 59.6 ft. dist., scribed "1/4 S19 BT".
A fir, 10 ins. diam., bears N70°W, 69.6 ft. dist., scribed "1/4 S19 BT".

Painted bearing trees and attached Land Survey Monument and Bearing Tree signs.

Magnetic Declination: 20° East.



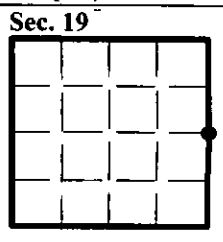
SKETCH OF CORNER

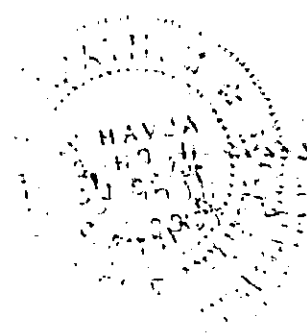
CERTIFICATION	
I, <u>Thomas Hornmel</u>	certify the information shown herein is true and correct.
I, <u>Alvah F. Hughes</u>	certify that this Corner Record correctly represents work performed by me or under my direction in compliance with the "Corner Recordation Act" (70-22-101, et seq., M.C.A.)
Date: <u>12/29/96</u>	Signature of Surveyor or Seal
Reg. No.: <u>7322LS</u>	
Employer: <u>U.S. FOREST SERVICE</u>	

Office of Clerk and Recorder, County of LINCOLN. This "corner record" was filed for record on FEB 3, 1997 and was noted on the cross-index plat and is assigned page No. 9153, in book No. _____

CORAL M. CUMMINGS

County Official





May 1954