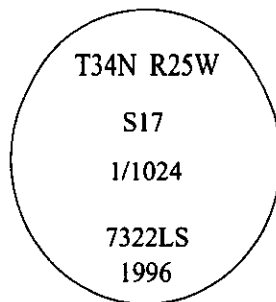


# CERTIFIED CORNER RECORDATION

Corner 1/1024 Sec. 17 T. 34N R. 25 W P.M., MT Lincoln County

- I. No previous history.
- II. Nothing found.
- III. At the corner position, as determined by survey, set a 30 in. long, 3/4 in. diam. alum. rod, with a 3 1/4 in. diam. alum. cap, 8 ins. below the shoulder of the road, mkd. as shown:



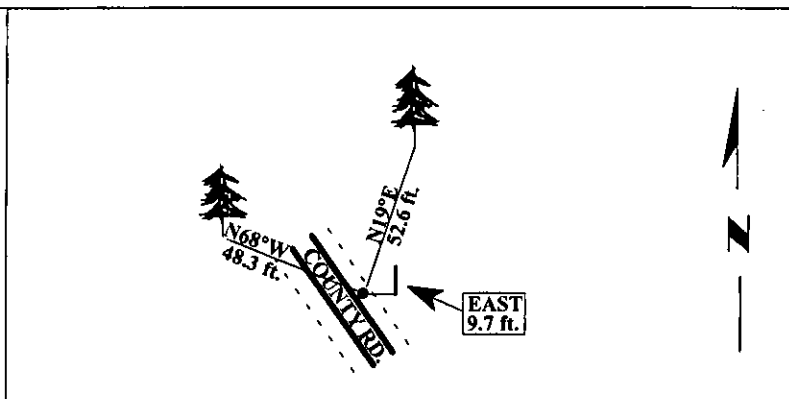
Establish two bearing trees:

A pine, 16 ins. diam., bears N19°E, 52.6 ft. dist., scribed "1/1024 S17 BT".  
A fir, 8 ins. diam., bears N68°E, 48.3 ft. dist., scribed "1/1024 S17 BT".

Painted bearing trees and attached Land Survey Monument and Bearing Tree signs.

Set a 6 ft. steel guard post, East, 9.7 ft., with Land Survey Monument and Property Boundary decals.

Magnetic Declination: 20° East.



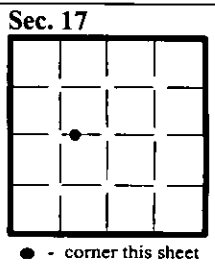
SKETCH OF CORNER

CERTIFICATION	
I, <u>Rex O. Rice</u>	certify the information shown herein is true and correct.
<u>Rex O. Rice</u>	
I, <u>Alvah F. Hughes</u>	
certify that this Corner Record correctly represents work performed by me or under my direction in compliance with the "Corner Recordation Act" (70-22-101, et seq., M.C.A.)	
<u>Alvah F. Hughes</u>	
Signature of Surveyor & Seal	
Date: <u>12/31/96</u>	
Reg. No.: <u>7322LS</u>	
Employer: <u>U.S. FOREST SERVICE</u>	

Office of Clerk and Recorder, County of LINCOLN. This "corner record" was filed for record on FEB 3, 1997 and was noted on the cross-index plat and is assigned page No. 9150, in book No. \_\_\_\_\_.

CORAL M. CUMMINGS  
County Official

By P/B





...and the fact that the *in vitro* and *in vivo* results are in good agreement.

•