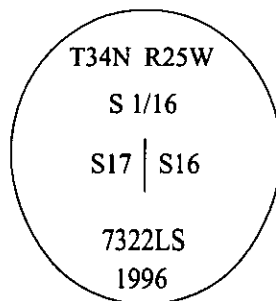


# CERTIFIED CORNER RECORDATION

Corner S 1/16 Secs. 16 & 17 T. 34N R. 25W P.M., MT Lincoln County

- I. No previous history.
- II. Nothing found.
- III. At the corner position as determined by survey, set a 30 in. long, 3/4 in. diam. alum. rod, 29 ins. in the ground, with 3 1/4 in. alum. cap, mkd. as shown:



Established two bearing trees:

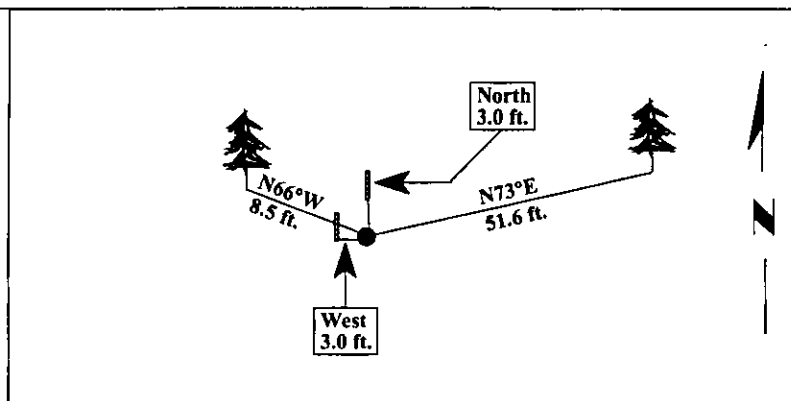
- A larch, 13 ins. diam., bears N73°E, 51.6 ft. dist., mkd. "S1/16 S16 BT."
- A pine, 8 ins. diam., bears N66°W, 8.5 ft. dist., mkd. "S1/16 S17 BT."

Painted bearing trees and attached Land Survey Monument and Bearing Tree signs.

Set a 6 ft. steel guard post, North, 3.0 ft., with Land Survey Monument and Property Boundary decals.

Set a 6 ft. steel guard post, West, 3.0 ft., with Land Survey Monument and Property Boundary decals.

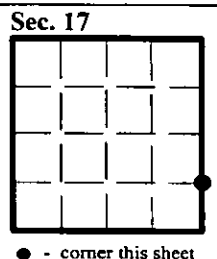
Magnetic Declination: 20° East.



SKETCH OF CORNER

CERTIFICATION	
I, <u>Rex O. Rice</u>	certify the information shown herein is true and correct.
<u>Rex O. Rice</u>	
I, <u>Alvah F. Hughes</u>	certify that this Corner Record correctly represents work performed by me or under my direction in compliance with the "Corner Recordation Act" (70-22-101 et seq. M.C.A.)
<u>Alvah F. Hughes</u>	
Signature of Surveyor & Seal	
Date: <u>12/29/96</u>	
Reg. No.: <u>7322LS</u>	
Employer: <u>U.S. FOREST SERVICE</u>	

Office of Clerk and Recorder, County of LINCOLN. This "corner record" was filed for record on FEB 3, 1997 and was noted on the cross-index plat and is assigned page No. 9149 in book No.                     .  
CORAL M. CUMMINGS By DJB  
County Official



• - corner this sheet



—

—

—