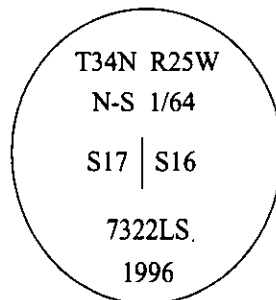


CERTIFIED CORNER RECORDATION

Corner N-S 1/64 Sec. 17 T. 34N R. 25 W P.M., MT Lincoln County

- I. No previous history found.
- II. Found a 1/2 in. diam. rebar with a yellow plastic cap, mkd. 7318S.
- III. At the corner position as determined by survey, set a 30 in. long, 3/4 in. diam., alum. pipe, 27 ins. in the ground, with a 3 1/4 in. diam. alum. cap, mkd. as shown:



Established two bearing trees:

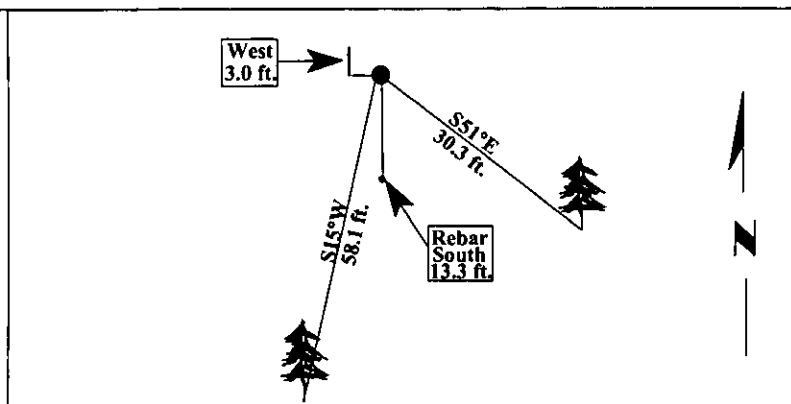
- A fir, 8 ins. diam., bears S51°E, 30.3 ft. dist., scribed "N-S 1/64 S16 BT".
- A fir, 25 ins. diam., bears S15°W, 58.1 ft. dist., scribed "N-S 1/64 S17 BT".

A rebar, 1/2 in. diam., with a yellow plastic cap, mkd. 7318S, South, 13.3 ft. dist. from monument.

Painted bearing trees and attached Land Survey Monument and Bearing Tree signs.

Set a 6 ft. steel guard post, West, 3.0 ft., with Land Survey Monument and Property Boundary decals.

Magnetic Declination: 20° East.

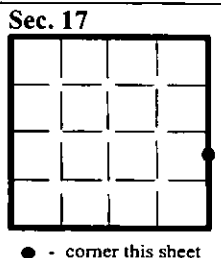


SKETCH OF CORNER

CERTIFICATION I, <u>Rex O. Rice</u> certify the information shown herein is true and correct. <u>Rex O. Rice</u> Signature of Surveyor & Seal	
I, <u>Alvah F. Hughes</u> certify that this Corner Record correctly represents work performed by me for, under my direction in compliance with the "Corner Recordation Act" (70-22101, et seq., M.C.A.) <u>Alvah F. Hughes</u> Signature of Surveyor & Seal	
Date: <u>12/29/96</u>	
Reg. No.: <u>7322LS</u>	
Employer: <u>U.S. FOREST SERVICE</u>	

Office of Clerk and Recorder, County of LINCOLN. This "corner record" was filed for record on FEB 3, 1997 and was noted on the cross-index plat and is assigned page No. 9146, in book No. _____.

CORAL M. CUMMINGS
County Official





THE
OFFICE OF THE
ATTORNEY GENERAL
STATE OF NEW YORK

ALBANY, N. Y.