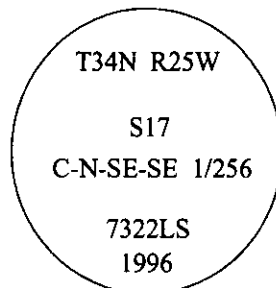


CERTIFIED CORNER RECORDATION

Corner C-N-SE-SE 1/256 Sec. 17 T. 34N R. 25 W P.M., MT Lincoln County

- I. No previous history.
- II. No evidence found.
- III. At the corner position as determined by survey, set a 30 in. long, 3/4 in. diam. alum. rod, 28 ins. in the ground, with a 3 1/4 in. diam. alum. cap, mkd. as shown:

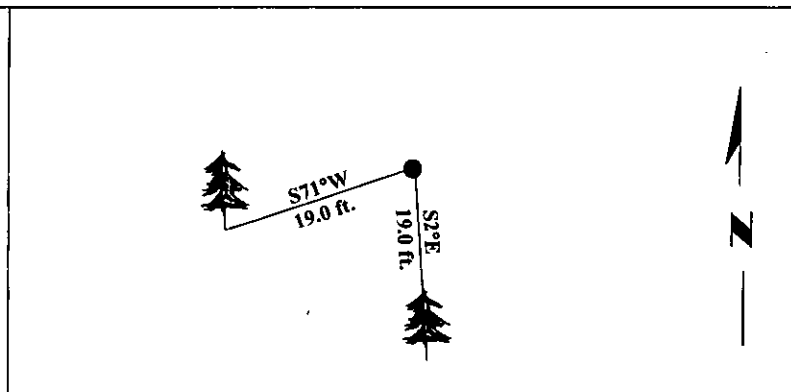


Established two bearing trees:

- A fir, 12 ins. diam., bears S2°E, 19.0 ft. dist., scribed "C-N-SE-SE 1/256 S17 BT".
- A fir, 14 ins. diam., bears S71°W, 19.0 ft. dist., scribed "X BT".

Painted bearing trees and attached Land Survey Monument and Bearing Tree signs.

Magnetic Declination: 20° East.

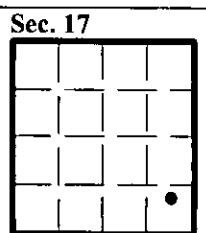


SKETCH OF CORNER

CERTIFICATION	
I. <u>Rex O. Rice</u>	certify the information shown herein is true and correct.
<u>Rex O. Rice</u>	
I. <u>Alvah F. Hughes</u>	certify that this Corner Record correctly represents work performed by me or under my direction in compliance with the "Corner Recordation Act" (70-22-104, 1st sec., M.C.A.)
<u>Alvah F. Hughes</u>	
Signature of Surveyor & Seal	
Date: <u>12/31/96</u>	
Reg. No.: <u>7322LS</u>	
Employer: <u>U.S. FOREST SERVICE</u>	

Office of Clerk and Recorder, County of LINCOLN. This "corner record" was filed for record on FEB 3, 1997, and was noted on the cross-index plat and is assigned page No. 9145, in book No. CORAL M. CUMMINGS

County Official JB



• - corner this sheet

