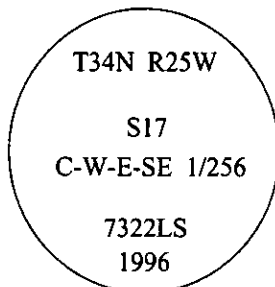


CERTIFIED CORNER RECORDATION

Corner C-W-E-SE 1/256 Sec. 17 T. 34N R. 25 W P.M., MT Lincoln County

- I. No previous history.
- II. No evidence found.
- III. At the corner position as determined by survey, set a 30 in. long, 3/4 in. diam. alum. rod, 27 ins. in the ground, in a small collar of stone, with a 3 1/4 in. diam. alum. cap, mkd. as shown:



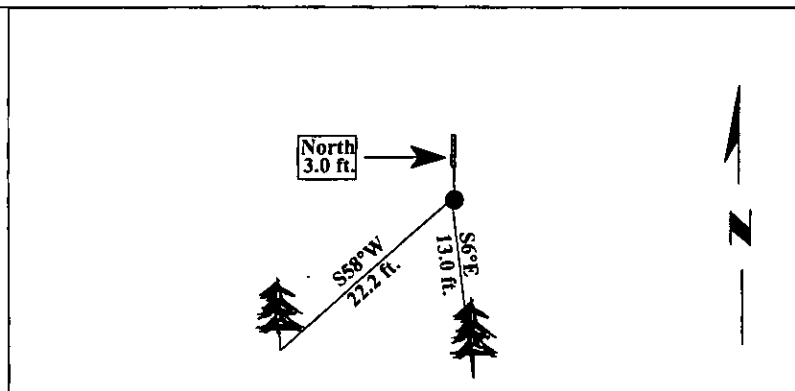
Established two bearing trees:

- A fir, 8 ins. diam., bears S6°E, 13.0 ft. dist., scribed "X BT".
- A fir, 10 ins. diam., bears S58°W, 22.2 ft. dist., scribed "C-W-E-SE 1/256 S17 BT".

Painted bearing trees and attached Land Survey Monument and Bearing Tree signs.

Set a 6 ft. steel guard post, North, 3.0 ft., with Land Survey Monument and Property Boundary decals.

Magnetic Declination: 20° East.

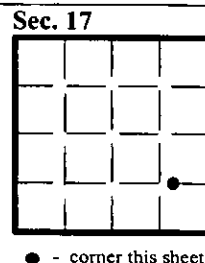


SKETCH OF CORNER

CERTIFICATION	
I, <u>Rex O. Rice</u>	certify the information shown herein is true and correct.
<u>Rex O. Rice</u>	
I, <u>Alvah F. Hughes</u>	certify that this Corner Record correctly represents work performed by me or, under my direction, in compliance with the "Corner Recordation Act" (70-22-101, et seq., M.C.A.).
<u>Alvah F. Hughes</u>	
Date: <u>5/02/96</u>	Signature of Surveyor & Seal
Reg. No.: <u>7322LS</u>	
Employer: <u>U.S. FOREST SERVICE</u>	

Office of Clerk and Recorder, County of LINCOLN. This "corner record" was filed for record on FEB 3, 1997 and was noted on the cross-index plat and is assigned page No. 9142, in book No. CORAL M. CUMMINGS

County Official [Signature]



• - corner this sheet

