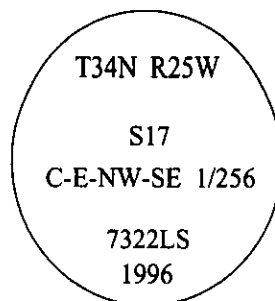


CERTIFIED CORNER RECORDATION

Corner C-E-NW-SE 1/256 Sec. 17 T. 34N R. 25 W P.M., MT Lincoln County

- I. No previous history.
- II. No evidence found.
- III. At the corner position as determined by survey, set a 30 in. long, 3/4 in. diam. alum. rod, 26 ins. in the ground, in a small collar of stone, with a 3 1/4 in. diam. alum. cap, mkd. as shown:



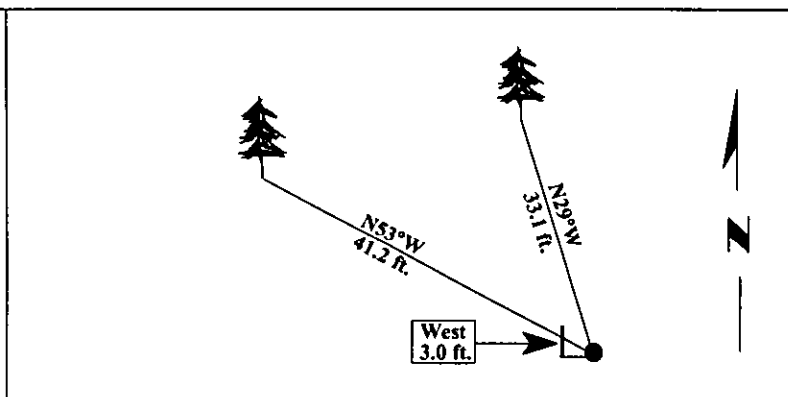
Established two bearing trees:

- A fir, 15 ins. diam., bears N29°W, 33.1 ft. dist., scribed "C-E-NW-SE 1/256 BT".
- A fir, 25 ins. diam., bears N53°W, 41.2 ft. dist., scribed "C-E-NW-SE 1/256 BT".

Painted bearing trees and attached Land Survey Monument and Bearing Tree signs.

Set a 6 ft. steel guard post, West, 3.0 ft., with Land Survey Monument and Property Boundary decals.

Magnetic Declination: 20° East.

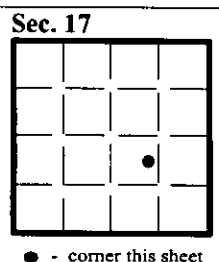


SKETCH OF CORNER

CERTIFICATION	
I. <u>Rex O. Rice</u>	certify the information shown herein is true and correct.
<i>Rex O. Rice</i>	
I. <u>Alvah F. Hughes</u>	certify that this Corner Record correctly represents work performed by me or under my direction in compliance with the "Corner Recordation Act" (70-22-101, et seq., M.C.A.)
<i>Alvah F. Hughes</i>	
Date: <u>12/31/96</u>	Signature of Surveyor & Seal
Reg. No.: <u>7322LS</u>	
Employer: <u>U.S. FOREST SERVICE</u>	

Office of Clerk and Recorder, County of LINCOLN. This "corner record" was filed for record on FEB 3, 1997, as noted on the cross-index plat and is assigned page No. 9138, in book No. CORAL M. CUMMINGS

County Official *By DFB*



• - corner this sheet

