

INSTRUCTIONS

1. Original and/or subsequent record used to evaluate the corner position.
2. Description of evidence found, note discrepancies in the record, state method of establishing lost or obliterated corners.
3. Description of monument and accessories set to perpetuate the corner position.
4. Sketch of corner, show all pertinent data which can best be shown in a sketch example, corner marking, topography ties, position of accessories, etc.
5. Certification must be signed and sealed by Land Surveyor registered in the State of Montana.
6. Fill in Cross Index & Section Diagram at bottom of sheet.

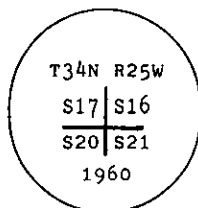
CERTIFIED CORNER RECORDATION

Corner SE Sec. Cor. of S17 T. 34 N. R. 25 W. P.M.M. Lincoln County

I. 1894 G.L.O. record by A. Jaqueth et al: Set a post and four bearing trees.

1960 BLM remonumentation: The cor. of secs. 16, 17, 20 and 21, as determined from the remains of the original bearing trees.

At the corner point, set an iron post, 30 ins. long, 2 1/2 ins. diam., 26 ins. in the ground, in concrete, with brass cap mkd.



From which the remains of the original bearing trees:

- A stump, 18 ins. diam., bears N13 3/4° E, 26 lks. (17.16 ft.) dist., mkd. T34N R25W S16 BT. (Record)
- A stump, 12 ins. diam., bears S52° E, 45 lks. (29.70 ft.) dist., mkd. with an overgrown blaze. [Record: S50 1/2° E, 45 lks. (29.70 ft.)]
- A dead larch, 24 ins. diam., bears S41 3/4° W, 38 lks. (25.08 ft.) dist., visible marks BT. (Record)
- A stump, 18 ins. diam., bears N24 1/2° W, 42 lks. (27.72 ft.) dist., visible marks W S17 BT. (Record)

The new bearing trees:

- A fir, 6 ins. diam., bears N60 1/2° E, 31 lks. (20.46 ft.) dist., mkd. T34N R25W S16 BT.
- A fir, 7 ins. diam., bears S79° E, 39 lks. (25.74 ft.) dist., mkd. T34N R25W S21 BT.
- A fir, 7 ins. diam., bears S51 1/2° W, 32 lks. (21.12 ft.) dist., mkd. T34N R25W S20 BT.
- A fir, 8 ins. diam., bears N 47° W, 38 lks. (25.08 ft.) dist., mkd. T34N R25W S17 BT.

II. Found a 2 1/2 ins. diam. pipe, 4 ins. out of the ground, with BLM brass cap mkd. as shown, from which

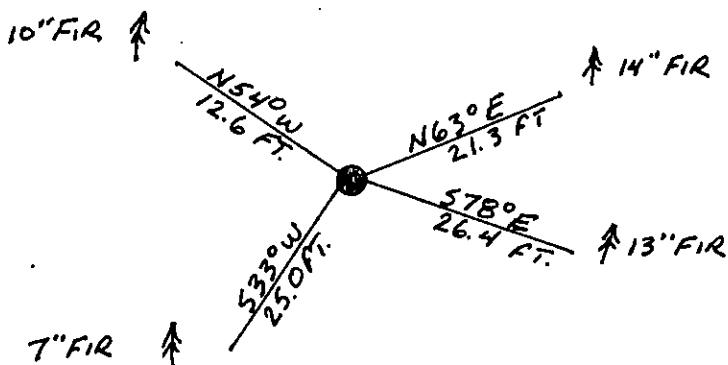
- A root crown, bears N16° E, 17.3 ft. dist.
- A fir, 14 ins. diam., bears N63° E, 21.3 ft. dist., healed face.
- A fir, 13 ins. diam., bears S78° E, 26.4 ft. dist., healed face.
- A stump, 14 ins. diam., bears S49° E, 29.9 ft. dist., visible scribing.
- A rotten stump, bears S43° W, 25.7 ft. dist.
- A down fir, 12 ins. diam., bears S51° W, 22.0 ft. dist., healed face.
- A dead pine, 12 ins. diam., bears N43° W, 25.1 ft. dist., visible scribing.
- A stump, 16 ins. diam., bears N20° W, 27.6 ft. dist., mkd. BT.

III. Established two new bearing trees

- A fir, 7 ins. diam., bears S33° W, 25.0 ft. dist., mkd. T34N R25W S20 BT.
- A fir, 10 ins. diam., bears N54° W, 12.6 ft. dist., mkd. T34N R25W S17 BT.

Painted red bands around the bearing trees and attached Land Survey Monument and Bearing Tree signs.

Set a 6 ft. galvanized steel guard post with Land Survey Marker and Property Boundary decals, East, 3 ft. Magnetic Declination: 20° East



SKETCH OF CORNER

CERTIFICATION

I, Kevin A. Todd
certify the information shown herein is true and correct.

Kevin A. Todd
Signature Ground Party Chief

I, Ronald A. Pearson
certify that this Corner Record correctly represents work performed by me or under my direction in compliance with the "Corner Recordation Act" (70-22-101, et seq., M.C.A.)

Ronald A. Pearson
Signature of Surveyor & Seal

Date: 10/1/92 Reg. No. 9008 LS

Employer: U. S. FOREST SERVICE

Office of Clerk and Recorder, County of Lincoln. This "corner record" was filed for record on 10-7-92 was noted on the cross-index plat and is assigned page No. 5110, in book No. Coral M. Cummings

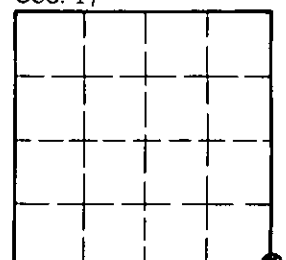
County Official

N-9

34 N 25 W

Cross Index No. _____ T. _____ R. _____ PMM

Sec. 17



• - corner this sheet



Handwritten text, possibly a signature or address, located in the lower right quadrant of the page. The text is faint and difficult to decipher.

Handwritten text, possibly a date or time, located in the lower center of the page. The text is faint and difficult to decipher.

Handwritten text, possibly a number or small note, located at the bottom center of the page. The text is faint and difficult to decipher.