

CERTIFIED LAND CORNER RECORDATION

Witness Corner for Secs. 25, 26, 35, 36, Twp. 34 N., R. 25 W.

DESCRIPTION OF CORNER EVIDENCE FOUND, AND ORIGINAL RECORD (IF KNOWN)

1894

Set a limestone 18x8x6 ins. 12 ins. in the ground for witness cor. to cor. to secs. 25, 26, 35 and 36 marked W.C. with 1 notch on S & E. edges from which a pine 5 ins. diam. bears S. 73° E 18 lks. dist. marked T. 34 N R 25W S 25 W.C. B.T. A pine 6 ins. diam. bears S. 66° 15' W 42 lks. dist. marked T. 34 N. R 25W S 26 W.C. B.T.

Found: Original stone - corner broken off but most of marking plainly visable, partial stump of SE Bearing tree found.

DESCRIPTION OF MONUMENT AND ACCESSORIES ESTABLISHED TO PERPETUATE THE ORIGINAL LOCATION OF THIS CORNER:

Date of work: 9/11/65
(Da. Mo. Yr.)

Set a Std. U.S.F.S. Brass Tablet for Witness Cor for Secs. 25, 26, 35, 36

Tablet marked WC
26+25
35+36
1965

Placed original stone alongside from which a 6" pine bears S 75° W 24.2 feet marked S 26 WC BT A 5" pine bears S 86° 30' E 28 feet marked S 25 WC BT Both Witness trees tagged with BLM bearing tree signs dated 11/3/65

SKETCH, WITH COURSE AND DISTANCE TO ADJACENT CORNERS IF DETERMINED IN THIS SURVEY.
(MAY SKETCH OR PASTE REPRODUCTION ON REVERSE SIDE.)

(See sketch on reverse)

LAMBERT MONT. NORTH
N 654 392.67 E 725 476.18

6" PINE MARKED S 26 WC BT S 75° 00' W 24.2' S 86° 30' E 28' 5" PINE MARKED S 25 W.C. B.T.

Surveyor's Seal

J. W. Ninneman

I, J. W. Ninneman
certify that the information shown herein is true and correct

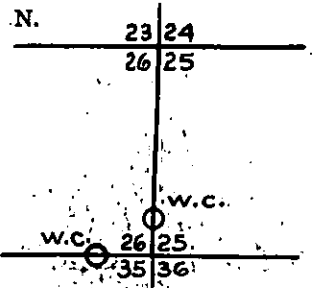
J. W. Ninneman
Signature of Ground Party Chief

J. W. Ninneman

I, J. W. Ninneman
certify that I have carefully performed or reviewed the work done on the diagrammed corner as reported on this recordation form and approve the same.

J. W. Ninneman
Signature of Surveyor

DIAGRAM OF CORNER:



○ = Corner recorded on the sheet

Montana 534 E.S.
Registration Number

Office of Clerk and Recorder, County of Lincoln

This "corner record" was filed for record on the 4th day of April 19 66, was noted on the cross-index plat and is assigned page No. 45, in book No. 1

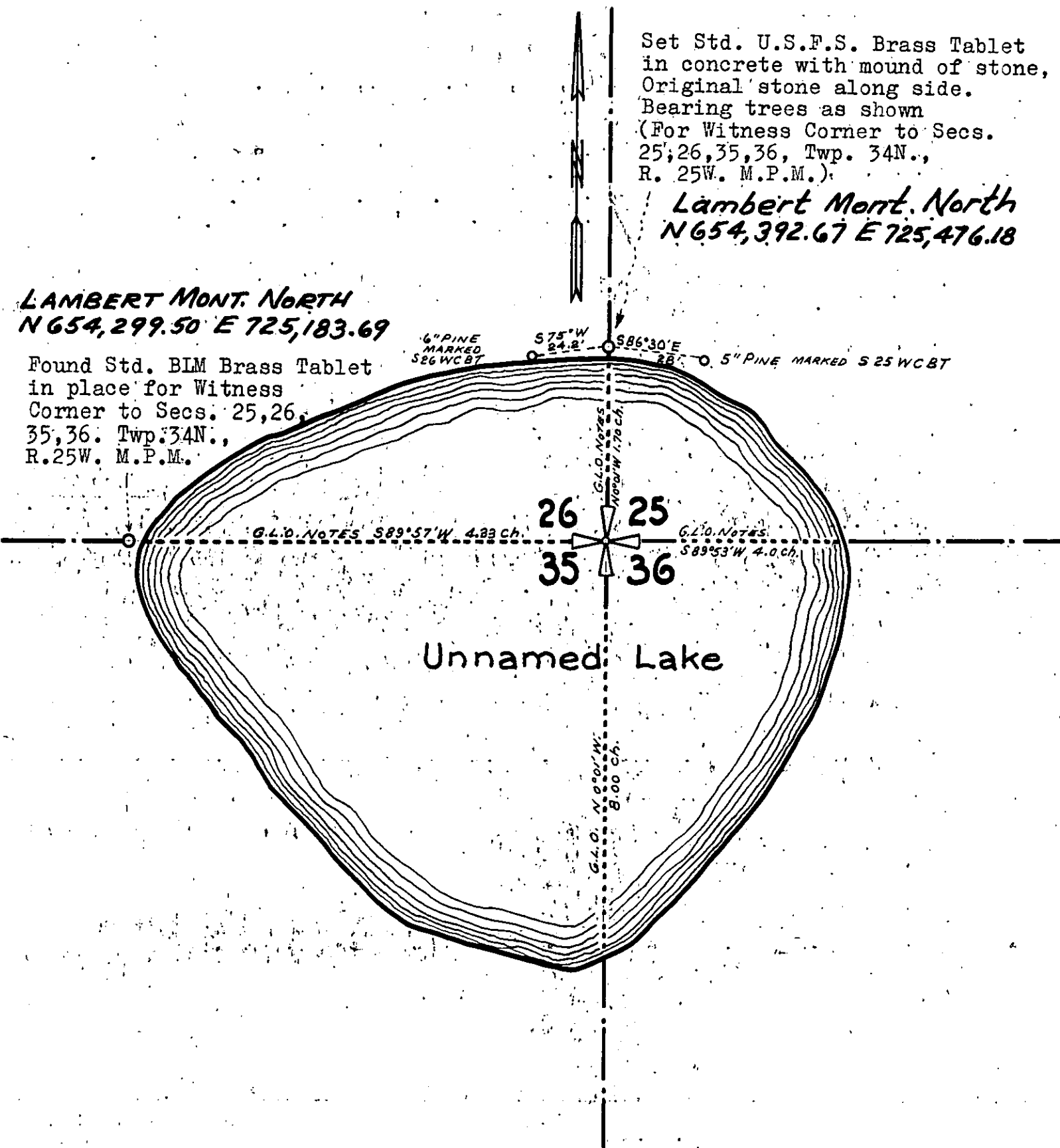
ELEANOR L. VAUGHN, by Verdel H. Hagem
County Official

Set Std. U.S.F.S. Brass Tablet
in concrete with mound of stone,
Original stone along side.
Bearing trees as shown
(For Witness Corner to Secs.
25, 26, 35, 36, Twp. 34N.,
R. 25W. M.P.M.)

Lambert Mont. North
N 654,392.67 E 725,476.18

LAMBERT MONT. NORTH
N 654,299.50 E 725,183.69

Found Std. BLM Brass Tablet
in place for Witness
Corner to Secs. 25, 26,
35, 36. Twp. 34N.,
R. 25W. M.P.M.



STATE OF MONTANA
COUNTY OF LINCOLN

Filed this 4th day of April A.D. 1966

at 10:55 A.M.

By James A. Macpherson County Clerk

Macpherson Deputy