

CERTIFIED LAND CORNER RECORDATION

1/4 Corner between Secs. 22 and 27 Twp. 34N., R. 25W., M.P.M.

DESCRIPTION OF CORNER EVIDENCE FOUND, AND ORIGINAL RECORD (IF KNOWN)

1894

39:66 Set a post 3 ft. long, 3ins. square, 24 ins. in the ground for 1/4 Sec. Cor., marked 1-4 S. on N face; from which a Pine 8 ins. diam. bears S. 82° 30' W. 17 lks. dist. marked 1-4 S.B.T. A pine 10 ins. diam. bears N. 29° E. 16 lks. dist. marked 1-4 S.B.T.

41.86 Tobacco Plains wagon road course N.W. & S.E.

EVIDENCE FOUND Exhaustive 2 day search filed to disclose any evidence of original post or witness trees - This area has been burned and recently thinned by U.S.F.S.
Total Distance Sec. Cor. to Sec. Cor. ---
Total Distance Reported-Orig. ---

DESCRIPTION OF MONUMENT AND ACCESSORIES ESTABLISHED TO PERPETUATE THE ORIGINAL LOCATION OF THIS CORNER:

Date of work: 17/11/65

Set a Std. U.S.F.S. Brass Tablet at mid point on line between Sec. Corners From East and From West Lines. Based on Lambert Grid and State Coordinates, line between Secs. 22 and 27 is

Corner is in shallow swale bearing NW and SE - large rocks placed around corner from which a 5" larch bears N 4° W 38.0' scribed 1/4

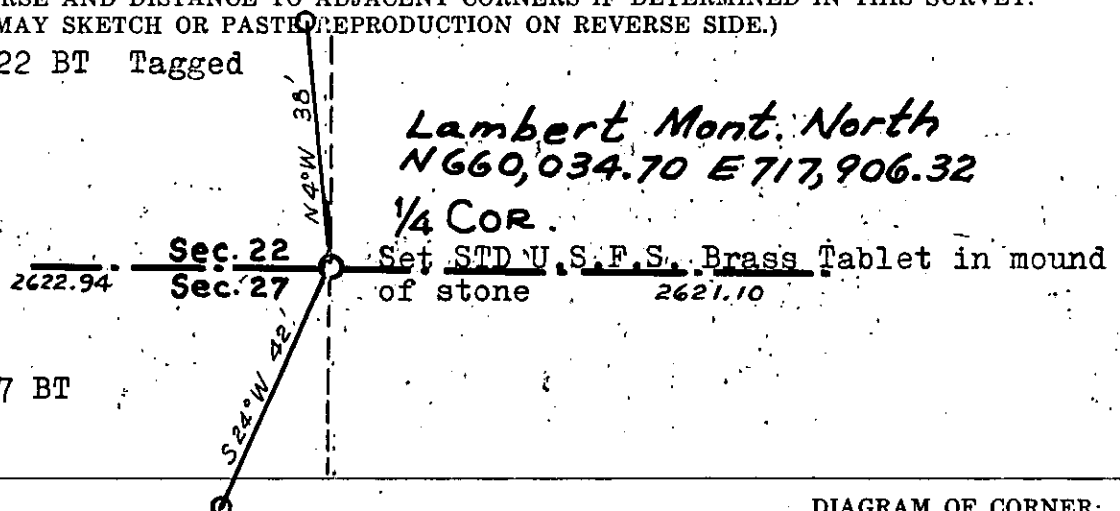
S 22 BT - Tagged with BLM sign

a 6" pine bears S 24° W 42.0' scribed 1/4 S 27 B.T. Tagged with BLM sign

SKETCH, WITH COURSE AND DISTANCE TO ADJACENT CORNERS IF DETERMINED IN THIS SURVEY. (MAY SKETCH OR PASTE REPRODUCTION ON REVERSE SIDE.)

5" Larch marked 1/4 S 22 BT Tagged with BLM Sign

6" Pine Marked 1/4 S 27 BT Tagged with BLM Sign



Surveyor's Seal

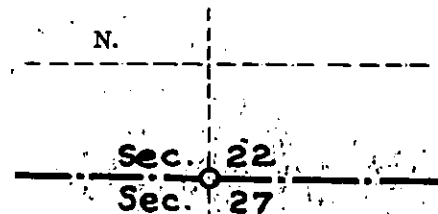
I, J. W. Ninneman
certify that the information shown herein is true and correct.

J. W. Ninneman
Signature of Ground Party Chief

I, J. W. Ninneman
certify that I have carefully performed or reviewed the work done on the diagrammed corner as reported on this recordation form and approve the same.

J. W. Ninneman
Signature of Surveyor

DIAGRAM OF CORNER:



○ = Corner recorded on the sheet

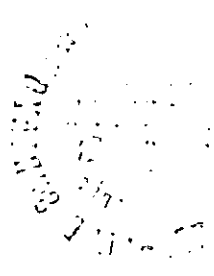
Montana 534 E.S.
Registration Number

Office of Clerk and Recorder, County of Lincoln

This "corner record" was filed for record on the 4th day of April 1966, was noted on the cross-index plat and is

assigned page No. 43, in book No. 1

ELEANOR L. VAUGHN, *Eleanor L. Vaughn*
County Official



STATE OF MONTANA
COUNTY OF LINCOLN

FILED 47 day of April
at 10:45 P. M. A. D. 1966
By James F. [unclear] County Clerk
Mike [unclear] Deputy