

INSTRUCTIONS

1. Original and/or subsequent record used to evaluate the corner position.
2. Description of evidence found, note discrepancies in the record, state method of establishing lost or obliterated corners.
3. Description of monument and accessories set to perpetuate the corner position.
4. Sketch of corner, show all pertinent data which can best be shown in a sketch example, corner marking, topography ties, position of accessories, etc.
5. Certification must be signed and sealed by Land Surveyor registered in the State of Montana.
6. Fill in Cross Index & Section Diagram at bottom of sheet.

CERTIFIED CORNER RECORDATION

Corner SW of Sec. 36 T. 34N R. 25W P.M.M. Lincoln County

1. 1894 Original GLO Record: Set a limestone, 12x10x8 ins. 8 ins. in the ground for cor. to secs. 1, 2, 35, and 36, marked with 1 notch on E. and 5 notches on W. edges; from which:

A fir, 10 ins. diam., bears N.51°45'E. 64 lks. dist. marked T.34N., R.25W., S.36 B.T.
A tamarack, 20 ins. diam., bears S.44°45'E. 59 lks. dist., marked T.33N., R.25W., S.1 B.T.
A fir, 16 ins. diam., bears S.46°30'W. 21 lks. dist. marked T.33N., R.25W., S.2 B.T.
A fir, 14 ins. diam., bears N.64°W. 30 lks. dist., marked T.34N., R.25W., S.35 B.T.

1934 GLO Resurvey of the N. Bdy. of T33N R25W: The cor. of secs. 1, 2, 35, 36, which is a limestone, 8x6x4 ins., above the ground, marked and witnessed, as described in the official record, with the exception that the SE bearing tree, standing, is dead; all other bearing trees dead and fallen. Bearing trees are established:

A tamarack, 24 ins. diam., bears N78½°E 105 lks. dist., marked T34N R25W S36 BT.
A tamarack, 22 ins. diam., bears S20½°E 103 lks. dist., marked T33N R25W S1 BT.
A tamarack, 20 ins. diam., bears S49½°W 68 lks. dist., marked T33N R25W S2 BT.
(No suitable trees in NW quadrant)

Beside the Cor.

Set an iron post, 3 ft. long, 2 ins. diam., 18 ins. in the ground, to bedrock, and in a mound of stone to top, with brass cap marked as shown, from which:

T34N R25W
S35 S36
S2 S1
T33N
1934
1977

1977 BLM Remonumentation: The cor. of secs. 1, 2, 35, and 36, on the S. bdy. of the Tp., monumented with an iron post, 2½ ins. diam., firmly set projecting 8 ins. above the ground, with brass cap properly mkd., and witnessed by the remains of the 1934 bearing trees:

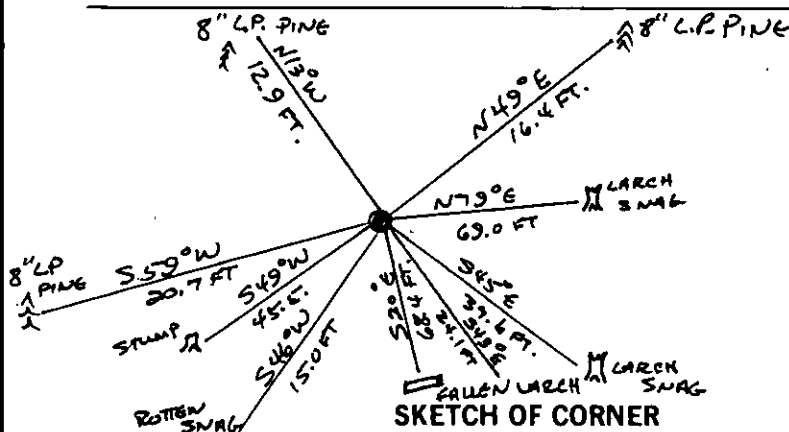
A dead larch snag, 36 ins. diam., bears N78½°E, 105 lks. dist., mkd. T34N R25W S36 BT.
A dead larch snag, 37 ins. diam., bears S20½°E, 103 lks. dist., mkd. T33N R25W S1 BT.
A larch stump, 30 ins. diam., bears S49½°W, 68 lks. dist., mkd. BT.

Add the marks 1977 to the brass cap as shown, from which new bearing trees:

A pine, 6 ins. diam., bears S43½°E, 36 lks. dist., mkd. T33N R25W S1 BT.
A pine, 7 ins. diam., bears S50½°W, 31 lks. dist., mkd. T33N R25W S2 BT.
A pine, 6 ins. diam., bears N16½°W, 19 lks. dist., mkd. T34N R25W S35 BT.

Rebuild a flat mound of stone, 3 ft. diam., around the iron post.

See back side for additional corner data.



CERTIFICATION

I, Douglas R. Maday
certify the information shown herein is true and correct.

Douglas R. Maday
Signature Ground Party Chief

I, Thomas C. Hill
certify that this Corner Record correctly represents work performed by me or under my direction in compliance with the "Corner Recordation Act" (78-27-101, et seq., M.C.A.)

Thomas C. Hill
Signature of Surveyor & Seal

Date: 8/86 Reg. No. 5612-S

Employer: U.S.F.S.

Office of Clerk and Recorder, County of Lincoln. This "corner record" was filed for record on Sept 18, 1986

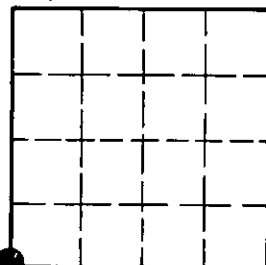
was noted on the cross-index plat and is assigned page No. 3357, in book No. _____

Janet B. Sugil by Eric D. Smith
County Official Deputy

Cross Index No. _____ T. _____ R. _____ PMM

Adopted July 1, 1981, Montana Board of Professional Engineers & Land Surveyors

Sec. 36



• - corner this sheet

INSTRUCTIONS TO SURVEYORS FOR COMPLETION OF CERTIFIED CORNER RECORDATION FORMS

I. ORIGINAL AND/OR SUBSEQUENT RECORD:

This item should describe or quote those portions of the original or subsequent record which were used in evaluating the corner position. The original record will usually be the General Land Office field notes. Subsequent record can come from several sources: Previously filed corner records, maps and plats, private and public records, etc. Some of the subsequent record, even though not in the public record, but known to have validity by the surveyor, may be quoted and appropriately noted.

The record data helps support the reestablished corner position because it clearly shows what history the surveyor based his corner position on. In some cases, however, the record may be unknown or not pertinent. A statement to that effect should appear on the corner record.

II. DESCRIPTION OF EVIDENCE FOUND OR METHOD OF LOCATING CORNER POSITION:

This item will describe the original or subsequent record evidence found. If portions of the found evidence cannot be reconciled with the record, then the disregarded record should be noted, and, if possible, an opinion as to its cause narrated.

If no physical evidence of the original or subsequent monuments and accessories can be found, then the method used to reestablish the lost or obliterated corner (single proportion, fence intersection, parol evidence, terrain calls, centerline of road, etc.) shall be indicated.

III. DESCRIPTION OF MONUMENTS AND ACCESSORIES SET TO PERPETUATE THE CORNER POSITION:

This item should list all details about the corner and its location which will help exclusively identify the corner position; including size and type of monument, how marked if not shown in sketch, and distinguishing topographic calls which help locate the corner. In many cases, instructions on how to find the corner should be included.

References or ties to other corners are optional and may be drawn on the face or back of the corner record form, or references to Certificate of Survey may be made. Separate drawings may be attached to the corner form.

If state plane coordinate values for the corner position are shown, then the control upon which they are based should be indicated.

IV. SKETCH OF CORNER:

This item will usually show how a found or set corner is marked and may also show topography or accessory monuments found or set and their relation to the corner. There is no stipulated format; the sketch could be transcribed field note entries.

V. CERTIFICATION:

The name and signature of the ground party chief is optional.

The Surveyor who performed or directed the field work which is depicted on the "Certified Corner Record" shall sign and affix his seal in the Certification.

The employer blank is optional but useful in tracking down original field note data or adjacent record if, in the future, questions arise about the corner.

VI.

The Cross Index at the bottom of the page should be completed by the Surveyor. Only the single Township Index where the corner is filed shall be completed.

The lower righthand corner is a corner location diagram and should have the pertinent section filled in at the top and a closed circle indicating the appropriate corner position in the section filled in. This is intended to be an aid in searching the "Record" once it has been filed.

II. I found a 2½ in. GLO brass cap, 6 ins. above ground, in a mound of stone, from which:

A larch snag, 24 ins. diam., bears N79°E 69.0 ft. dist., scribing visible.

A fallen larch, bears S20°E 68.4 ft. dist., scribing visible.

A stump, bears S49°W 45.5 ft. dist., scribing visible.

A larch snag, 20 ins. diam., bears S45°E 37.6 ft. dist., scribing visible.

A L.P. pine, 8 ins. diam., bears S43°E 24.1 ft. dist., scribing healed.

A L.P. pine, 8 ins. diam., bears S59°W 20.7 ft. dist., scribing visible.

A fallen and rotten snag, bears S46°W 15.0 ft. dist., no scribing visible.

A L.P. pine, 8 ins. diam., bears N13°W 12.9 ft. dist., scribing visible.

No evidence of the bearing trees @ N51°45'E and N64°30'W.

III. I set a galvanized steel guard post with a Survey Marker decal attached, North 4 ft. dist. I painted red bands around bearing trees and attached BT and Land Survey Monument signs. I established one new bearing tree:

A L.P. pine, 8 ins. diam., bears N49°E, 16.4 ft. dist., scribed T34N R25W S36 BT.