

INSTRUCTIONS

1. Original and/or subsequent record used to evaluate the corner position.
2. Description of corner found, note discrepancies in the record, state method of setting lost or obliterated corners.
3. Description of monument and accessories set to perpetuate the corner position.
4. Sketch of corner, show all pertinent data which can best be shown in a sketch example, corner marking, topography lies, position of accessories, etc.
5. Certification must be signed and sealed by Registered Land Surveyor in State of Montana.
6. Fill in Cross Index & Section Diagram at bottom of sheet.

CERTIFIED CORNER RECORDATION

Corner C-N-N 1/64 Sec. 32 T. 34N R. 25W P.M.M. LINCOLN County

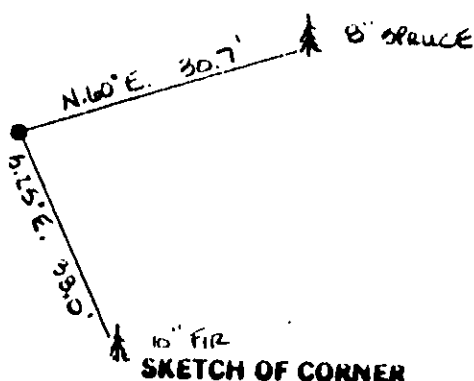
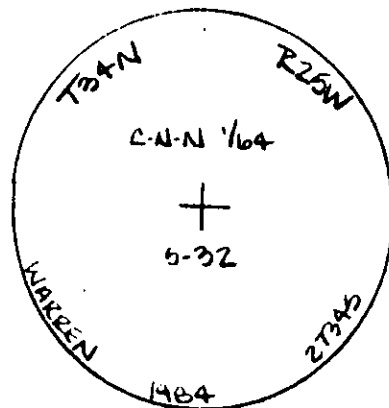
No record or evidence of corner being previously set.

I position corner from found section and quarter corners and as shown on the Certificate of Survey as filed and as of record in the Lincoln Co. Courthouse

I set a 3" alum. cap for corner position, from which:

An 8" spruce bears N.60°E., 30.7' scribed C-N-N 1/64 S32 BT
A 10" fir bears S.25°E., 38.0' scribed C-N-N 1/64 S32 BT

Painted red bands around BT's and painted blazes red.
Posted BT, Attention, and Location signs.
6' metal post w/survey monument sticker along side cap.

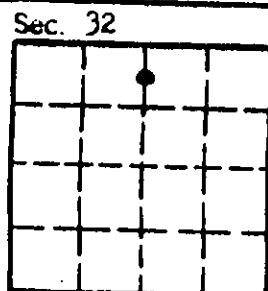


SKETCH OF CORNER

CERTIFICATION
I, GLENN KNODLE
certify the information shown herein is true and correct.
Glenn Knodle
Signature Ground Party Chief
I, H. GENE WARREN
certify that this Corner Record correctly represents work performed by me or under by direction in compliance with the "Corner Recordation Act" (70-22-101, et seq., M.D.A.)
H. Gene Warren
Signature of Surveyor & Seal
Date: 10/84 Reg. No. 27345
Employer: ROCKY MOUNTAIN SURVEYORS

Office of Clerk and Recorder, County of LINCOLN. This "corner record" was filed for record on the NOV 30 day of 1984 was noted on the cross-index plat and is assigned page No. 2823, in book No. _____

Don't BF Sigel by Betty Conces
County Official deputy



• - corner this sheet

