

INSTRUCTIONS

1. Original and/or sub-record used to evaluate the corner position.
2. Description of evidence found, note discrepancies in the record, state method of establishing lost or obliterated corners.
3. Description of monument and accessories set to perpetuate the corner position.
4. Sketch or corner, show all pertinent data which can best be shown in a sketch example, corner marking, topography ties, position of accessories, etc.
5. Certification must be signed and sealed by Registered Land Surveyor in State of Montana.
6. Fill in Cross Index & Section Diagram at bottom of sheet.

CERTIFIED CORNER RECORDATION

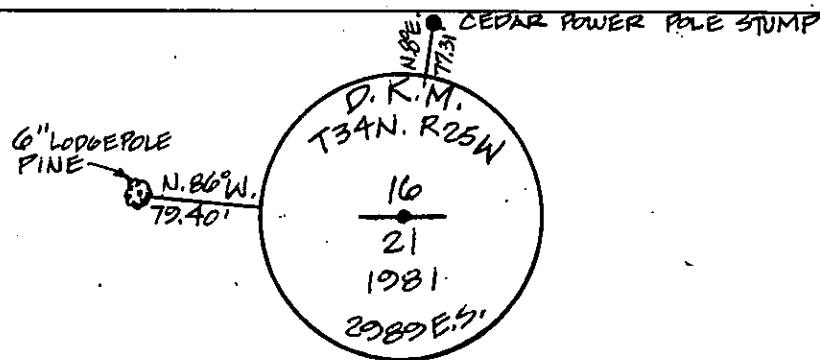
Corner SOUTH 1/4 CORNER SEC. 16 T. 34 N. R. 25 W. P.M.M. LINCOLN County
NORTH 1/4 CORNER SEC. 21

ORIGINAL RECORD:

SET POST - 3' LONG, 3" SQUARE, 24" IN GROUND
 MARKED "1-4 S" ON NORTH FACE. FROM WHICH
 A FIR, 10" DIA., BEARS S 20° 30' E. 19 LKS. DIST., MARKED 1-4 S. B.T.
 A SPRUCE 8" DIA., BEARS N. 40° 30' W. 26 LKS. DIST., MARKED 1-4 S. B.T.

NOTHING FOUND

SET ALUMINUM CAP BY SINGLE PROPORTION
 SEE C. OF S. NO. 992 FOR ADJACENT CORNERS



SKETCH OF CORNER

CERTIFICATION

I, _____
 certify the information shown herein is true and correct.

Signature Ground Party Chief

I, D. K. MARQUARDT

certify that this Corner Record correctly represents work performed by me or under my direction in compliance with the "Corner Recordation Act" (70-22-101, et seq., M.D.A.)

D. K. Marquardt
 Signature of Surveyor & Seal

Date: 2-5-82 Reg. No. 2989 ES

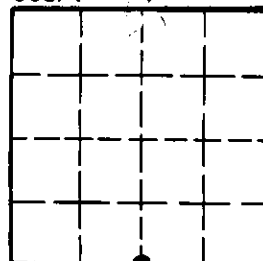
Employer: _____

Office of Clerk and Recorder, County of Lincoln. This "corner record" was filed for record on the February 17th day of 1982 was noted on the cross-index plat and is assigned page No. 1527, in book No. 1

Eleanor L. Vaughn by Betty L. Conner
 County Official deputy

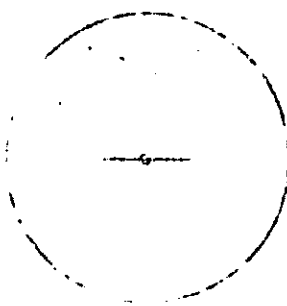
Cross Index No. N-11 T. 34 N R. 25 W P.M.M.

Sec. 16



• - corner this sheet

THE UNIVERSITY OF MICHIGAN
LIBRARY
ANN ARBOR, MICHIGAN



LIBRARY
ANN ARBOR, MICHIGAN
JAN 10 1964