

# CERTIFIED CORNER RECORDATION

Corner WC MC Sec 5/8 T. 34N R. 25W P.M.M. Lincoln County  
West Shore

1. NONE

2. NONE

3. Set:

An Aluminum Cap, 3/4 ins. diam., on a 5/8 ins. Rebar, set 0.4 ft. above ground, mkd. as shown;  
 Established:

N88°54'10"E, 415.3 ft. dist. to the meander corner;

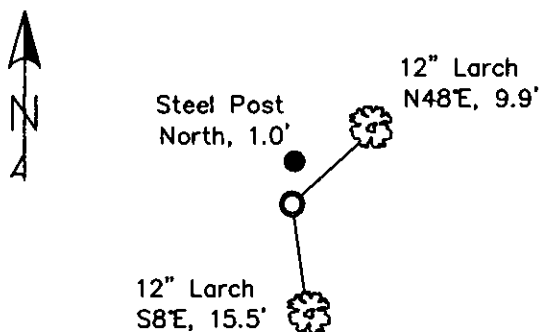
A Larch, 12 ins. in diam., bears N48°E, 9.9 ft. dist., scribed "WC MC BT";

A Larch, 12 ins. in diam., bears S8°E, 15.5 ft. dist., "WC MC BT";

Steel post with decals bears North, 1.0 ft. dist.



MAGNETIC DECLINATION - 15°2' EAST



SKETCH OF CORNER

CERTIFICATION

I, Erich Shrack  
 certify the information shown herein is true and correct.

LAWRENCE A. GLAHE  
 certify that this Corner Recordation represents work performed by me or under my direction in compliance with the "Corner Recordation Act" (16-12-101, et seq. M.C.A.)

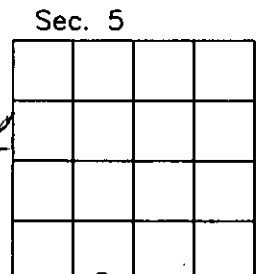
Date: 12-6-10 9748 LS  
 Registered Professional Engineer and Land Surveyor  
 Employer: GLAHE & ASSOC., INC.

Office of Clerk and Recorder, County of Lincoln This "corner  
 record" was filed for record 230107 BOOK: CCR CC&R'S PAGE: 11706 Pages: 1  
 was noted on the cross-index STATE OF MONTANA LINCOLN COUNTY  
 book No. TAMMY D. LAUER CLERK AND RECORDER  
RECORDED: 12/09/2010 11:06 KOI: CC&R'S  
FEE: \$0.00 BY: *[Signature]*

TO: GLAHE & ASSOC., INC. P.O. BOX 1863, SANDPOINT, ID. 83860,

Cross Index No. E-6 T. 34N R. 25W PMM  
E-7

Adopted July 1, 1981, Montana Board of Professional Engineers & Land Surveyors



● corner this sheet

REPORT OF THE COMMISSIONER OF THE GENERAL LAND OFFICE

FOR THE YEAR 1880

ALBANY, N. Y.:  
J. B. LEECH, PRINTER.  
1881.

THE COMMISSIONER OF THE GENERAL LAND OFFICE,  
WASHINGTON, D. C.,  
REPORTS TO THE SECRETARY OF THE INTERIOR,  
WASHINGTON, D. C.,  
FOR THE YEAR 1880.

ALBANY, N. Y.:  
J. B. LEECH, PRINTER.  
1881.