

# CERTIFIED CORNER RECORDATION

Corner C¼ Cor Sec 7 T. 34N R. 25W P.M.M. Lincoln County

1. NONE

2. Found:

A 5/8 ins. rebar with yellow plastic cap mkd. #7328S

3. Set:

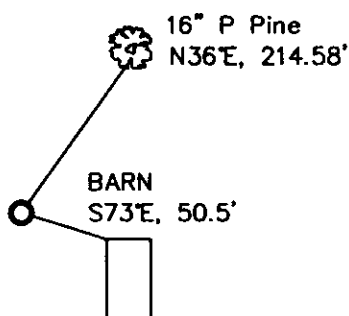
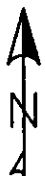
Replaced yellow plastic cap with an Aluminum Cap, 3¼ ins. diam., on the 5/8 ins. Rebar, mkd. as shown;

Established:

A Ponderosa Pine, 16 ins. in diam., bears N36°E, 214.58' ft. dist., scribed "C¼ S7 BT";  
NW corner top of Foundation Ant Flats Historical Barn Building bears S73°E, 50.5 ft. dist;  
Steel posts with decals bear North and West 2 ft. dist.



MAGNETIC DECLINATION - 15'2" EAST



SKETCH OF CORNER

CERTIFICATION

I, Erich Shrack  
certify the information shown herein is true and correct.

LAWRENCE A. GLAHE  
certify that this Corner Recordation represents work performed by me or under my supervision in compliance with the "Corner Recordation Act" (Mont. Code Annotated, § 82-1401, et seq. M.C.A.)

Date: 12-6-10 9748 LS  
Employer: GLAHE & ASSOC., INC.

Office of Clerk and Recorder, County of Lincoln. This "corner

record" was filed for record

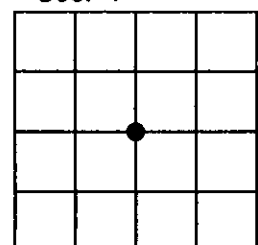
was noted on the cross-index

book No. \_\_\_\_\_

230094 BOOK: CCR CC&R'S PAGE: 11693 Pages: 1  
STATE OF MONTANA LINCOLN COUNTY  
RECORDED: 12/09/2010 10:53 KOI: CC&R'S  
TAMMY D. LAUER CLERK AND RECORDER  
FEE: \$0.00 BY: Glennie Lauer Deputy  
TO: GLAHE & ASSOC., INC. P.O. BOX 1863, SANDPOINT, ID. 83860,  
Cross Index No. G-3 T. 34N R. 25W PMM

Adopted July 1, 1981, Montana Board of Professional Engineers & Land Surveyors

Sec. 7



● corner this sheet

UNITED STATES DEPARTMENT OF JUSTICE

WASHINGTON, D. C. 20535

Page

1. This document contains information that is

being furnished to you for your information only. It is not to be distributed outside your organization. If you are not the intended recipient, please do not disseminate, copy, or otherwise use this information. If you have received this document in error, please notify the sender.



2. This document is the property of the United States Department of Justice and is loaned to you for your information only. It is not to be distributed outside your organization. If you are not the intended recipient, please do not disseminate, copy, or otherwise use this information. If you have received this document in error, please notify the sender.

3. This document is the property of the United States Department of Justice and is loaned to you for your information only. It is not to be distributed outside your organization. If you are not the intended recipient, please do not disseminate, copy, or otherwise use this information. If you have received this document in error, please notify the sender.

4. This document is the property of the United States Department of Justice and is loaned to you for your information only. It is not to be distributed outside your organization. If you are not the intended recipient, please do not disseminate, copy, or otherwise use this information. If you have received this document in error, please notify the sender.

5. This document is the property of the United States Department of Justice and is loaned to you for your information only. It is not to be distributed outside your organization. If you are not the intended recipient, please do not disseminate, copy, or otherwise use this information. If you have received this document in error, please notify the sender.

6. This document is the property of the United States Department of Justice and is loaned to you for your information only. It is not to be distributed outside your organization. If you are not the intended recipient, please do not disseminate, copy, or otherwise use this information. If you have received this document in error, please notify the sender.

7. This document is the property of the United States Department of Justice and is loaned to you for your information only. It is not to be distributed outside your organization. If you are not the intended recipient, please do not disseminate, copy, or otherwise use this information. If you have received this document in error, please notify the sender.

8. This document is the property of the United States Department of Justice and is loaned to you for your information only. It is not to be distributed outside your organization. If you are not the intended recipient, please do not disseminate, copy, or otherwise use this information. If you have received this document in error, please notify the sender.

9. This document is the property of the United States Department of Justice and is loaned to you for your information only. It is not to be distributed outside your organization. If you are not the intended recipient, please do not disseminate, copy, or otherwise use this information. If you have received this document in error, please notify the sender.

10. This document is the property of the United States Department of Justice and is loaned to you for your information only. It is not to be distributed outside your organization. If you are not the intended recipient, please do not disseminate, copy, or otherwise use this information. If you have received this document in error, please notify the sender.

11. This document is the property of the United States Department of Justice and is loaned to you for your information only. It is not to be distributed outside your organization. If you are not the intended recipient, please do not disseminate, copy, or otherwise use this information. If you have received this document in error, please notify the sender.