

# CERTIFIED CORNER RECORDATION

Corner S 1/16th Cor Sec 6 T. 34N R. 25W P.M.M. Lincoln County

1. NONE

2. NONE

3. Set:

An Aluminum Cap, 3/4 ins. diam., on a 5/8 ins. Rebar, set 0.1 ft. below asphalt of Highway pulloff apron across from Murphy Lake Ranger Station, mkd. as shown;

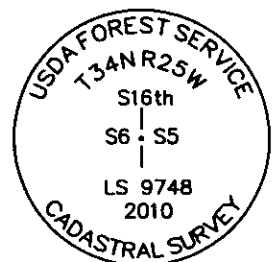
Established:

A Douglas Fir, 12 ins. in diam., bears N29E, 123.73' ft. dist. scribed S1/16 S5/S6 T34N R25W;

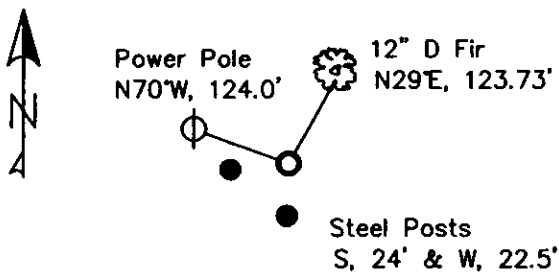
A Power pole, bears N70W, 124.00 ft. dist.;

Steel post with decals bears South, 24.00 ft. dist. and West, 22.5 ft. dist., both 3 ft. off paved apron.

Painted 3 ins. band of orange paint on asphalt.



MAGNETIC DECLINATION - 15'2" EAST



CERTIFICATION

I, Erich Shrack  
certify the information shown above is true and correct.

I, LAWRENCE A. GLAHE  
certify that this Corner Recordation represents work performed by me or under my supervision in compliance with the "Corner Recordation Act" (No. 12-1401, et seq. M.C.A.)

Date: 12-6-10 9748 LS  
Employer: GLAHE & ASSOC., INC.

## SKETCH OF CORNER

Office of Clerk and Recorder, County of Lincoln. This "corner

record" was filed for record on 230088 BOOK: CCR CC&R'S PAGE: 11687 Pages: 1 Sec. 6

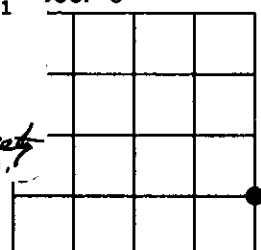
was noted on the cross-index p STATE OF MONTANA LINCOLN COUNTY  
RECORDED: 12/09/2010 10:47 KOI: CC&R'S

book No. TAMMY D. LAUER CLERK AND RECORDER

FEE: \$0.00 BY Lawrence A. Glahé  
TO: GLAHE & ASSOC., INC. P.O. BOX 1863, SANDPOINT, ID. 83860

Cross Index No. D-5 T. 34N R. 25W PMM

Adopted July 1, 1981, Montana Board of Professional Engineers & Land Surveyors



● corner this sheet

1997, 1998, 1999, 2000, 2001, 2002, 2003, 2004, 2005, 2006, 2007, 2008, 2009, 2010, 2011, 2012, 2013, 2014, 2015, 2016, 2017, 2018, 2019, 2020, 2021, 2022, 2023, 2024, 2025, 2026, 2027, 2028, 2029, 2030, 2031, 2032, 2033, 2034, 2035, 2036, 2037, 2038, 2039, 2040, 2041, 2042, 2043, 2044, 2045, 2046, 2047, 2048, 2049, 2050, 2051, 2052, 2053, 2054, 2055, 2056, 2057, 2058, 2059, 2060, 2061, 2062, 2063, 2064, 2065, 2066, 2067, 2068, 2069, 2070, 2071, 2072, 2073, 2074, 2075, 2076, 2077, 2078, 2079, 2080, 2081, 2082, 2083, 2084, 2085, 2086, 2087, 2088, 2089, 2090, 2091, 2092, 2093, 2094, 2095, 2096, 2097, 2098, 2099, 2100, 2101, 2102, 2103, 2104, 2105, 2106, 2107, 2108, 2109, 2110, 2111, 2112, 2113, 2114, 2115, 2116, 2117, 2118, 2119, 2120, 2121, 2122, 2123, 2124, 2125, 2126, 2127, 2128, 2129, 2130, 2131, 2132, 2133, 2134, 2135, 2136, 2137, 2138, 2139, 2140, 2141, 2142, 2143, 2144, 2145, 2146, 2147, 2148, 2149, 2150, 2151, 2152, 2153, 2154, 2155, 2156, 2157, 2158, 2159, 2160, 2161, 2162, 2163, 2164, 2165, 2166, 2167, 2168, 2169, 2170, 2171, 2172, 2173, 2174, 2175, 2176, 2177, 2178, 2179, 2180, 2181, 2182, 2183, 2184, 2185, 2186, 2187, 2188, 2189, 2190, 2191, 2192, 2193, 2194, 2195, 2196, 2197, 2198, 2199, 2200, 2201, 2202, 2203, 2204, 2205, 2206, 2207, 2208, 2209, 2210, 2211, 2212, 2213, 2214, 2215, 2216, 2217, 2218, 2219, 2220, 2221, 2222, 2223, 2224, 2225, 2226, 2227, 2228, 2229, 2230, 2231, 2232, 2233, 2234, 2235, 2236, 2237, 2238, 2239, 2240, 2241, 2242, 2243, 2244, 2245, 2246, 2247, 2248, 2249, 2250, 2251, 2252, 2253, 2254, 2255, 2256, 2257, 2258, 2259, 2260, 2261, 2262, 2263, 2264, 2265, 2266, 2267, 2268, 2269, 2270, 2271, 2272, 2273, 2274, 2275, 2276, 2277, 2278, 2279, 2280, 2281, 2282, 2283, 2284, 2285, 2286, 2287, 2288, 2289, 2290, 2291, 2292, 2293, 2294, 2295, 2296, 2297, 2298, 2299, 2300, 2301, 2302, 2303, 2304, 2305, 2306, 2307, 2308, 2309, 2310, 2311, 2312, 2313, 2314, 2315, 2316, 2317, 2318, 2319, 2320, 2321, 2322, 2323, 2324, 2325, 2326, 2327, 2328, 2329, 2330, 2331, 2332, 2333, 2334, 2335, 2336, 2337, 2338, 2339, 2340, 2341, 2342, 2343, 2344, 2345, 2346, 2347, 2348, 2349, 2350, 2351, 2352, 2353, 2354, 2355, 2356, 2357, 2358, 2359, 2360, 2361, 2362, 2363, 2364, 2365, 2366, 2367, 2368, 2369, 2370, 2371, 2372, 2373, 2374, 2375, 2376, 2377, 2378, 2379, 2380, 2381, 2382, 2383, 2384, 2385, 2386, 2387, 2388, 2389, 2390, 2391, 2392, 2393, 2394, 2395, 2396, 2397, 2398, 2399, 2400, 2401, 2402, 2403, 2404, 2405, 2406, 2407, 2408, 2409, 2410, 2411, 2412, 2413, 2414, 2415, 2416, 2417, 2418, 2419, 2420, 2421, 2422, 2423, 2424, 2425, 2426, 2427, 2428, 2429, 2430, 2431, 2432, 2433, 2434, 2435, 2436, 2437, 2438, 2439, 2440, 2441, 2442, 2443, 2444, 2445, 2446, 2447, 2448, 2449, 2450, 2451, 2452, 2453, 2454, 2455, 2456, 2457, 2458, 2459, 2460, 2461, 2462, 2463, 2464, 2465, 2466, 2467, 2468, 2469, 2470, 2471, 2472, 2473, 2474, 2475, 2476, 2477, 2478, 2479, 2480, 2481, 2482, 2483, 2484, 2485, 2486, 2487, 2488, 2489, 2490, 2491, 2492, 2493, 2494, 2495, 2496, 2497, 2498, 2499, 2500, 2501, 2502, 2503, 2504, 2505, 2506, 2507, 2508, 2509, 2510, 2511, 2512, 2513, 2514, 2515, 2516, 2517, 2518, 2519, 2520, 2521, 2522, 2523, 2524, 2525, 2526, 2527, 2528, 2529, 2530, 2531, 2532, 2533, 2534, 2535, 2536, 2537, 2538, 2539, 2540, 2541, 2542, 2543, 2544, 2545, 2546, 2547, 2548, 2549, 2550, 2551, 2552, 2553, 2554, 2555, 2556, 2557, 2558, 2559, 2560, 2561, 2562, 2563, 2564, 2565, 2566, 2567, 2568, 2569, 2570, 2571, 2572, 2573, 2574, 2575, 2576, 2577, 2578, 2579, 2580, 2581, 2582, 2583, 2584, 2585, 2586, 2587, 2588, 2589, 2590, 2591, 2592, 2593, 2594, 2595, 2596, 2597, 2598, 2599, 2600, 2601, 2602, 2603, 2604, 2605, 2606, 2607, 2608, 2609, 2610, 2611, 2612, 2613, 2614, 2615, 2616, 2617, 2618, 2619, 2620, 2621, 2622, 2623, 2624, 2625, 2626, 2627, 2628, 2629, 2630, 2631, 2632, 2633, 2634, 2635, 2636, 2637, 2638, 2639, 2640, 2641, 2642, 2643, 2644, 2645, 2646, 2647, 2648, 2649, 2650, 2651, 2652, 2653, 2654, 2655, 2656, 2657, 2658, 2659, 2660, 2661, 2662, 2663, 2664, 2665, 2666, 2667, 2668, 2669, 2670, 2671, 2672, 2673, 2674, 2675, 2676, 2677, 2678, 26

1. *Chlorophyll a* (Chl *a*)  
 2. *Chlorophyll b* (Chl *b*)  
 3. *Chlorophyll c* (Chl *c*)  
 4. *Chlorophyll d* (Chl *d*)  
 5. *Chlorophyll e* (Chl *e*)  
 6. *Chlorophyll f* (Chl *f*)  
 7. *Chlorophyll g* (Chl *g*)  
 8. *Chlorophyll h* (Chl *h*)  
 9. *Chlorophyll i* (Chl *i*)  
 10. *Chlorophyll j* (Chl *j*)  
 11. *Chlorophyll k* (Chl *k*)  
 12. *Chlorophyll l* (Chl *l*)  
 13. *Chlorophyll m* (Chl *m*)  
 14. *Chlorophyll n* (Chl *n*)  
 15. *Chlorophyll o* (Chl *o*)  
 16. *Chlorophyll p* (Chl *p*)  
 17. *Chlorophyll q* (Chl *q*)  
 18. *Chlorophyll r* (Chl *r*)  
 19. *Chlorophyll s* (Chl *s*)  
 20. *Chlorophyll t* (Chl *t*)  
 21. *Chlorophyll u* (Chl *u*)  
 22. *Chlorophyll v* (Chl *v*)  
 23. *Chlorophyll w* (Chl *w*)  
 24. *Chlorophyll x* (Chl *x*)  
 25. *Chlorophyll y* (Chl *y*)  
 26. *Chlorophyll z* (Chl *z*)  
 27. *Chlorophyll aa* (Chl *aa*)  
 28. *Chlorophyll ab* (Chl *ab*)  
 29. *Chlorophyll ac* (Chl *ac*)  
 30. *Chlorophyll ad* (Chl *ad*)  
 31. *Chlorophyll ae* (Chl *ae*)  
 32. *Chlorophyll af* (Chl *af*)  
 33. *Chlorophyll ag* (Chl *ag*)  
 34. *Chlorophyll ah* (Chl *ah*)  
 35. *Chlorophyll ai* (Chl *ai*)  
 36. *Chlorophyll aj* (Chl *aj*)  
 37. *Chlorophyll ak* (Chl *ak*)  
 38. *Chlorophyll al* (Chl *al*)  
 39. *Chlorophyll am* (Chl *am*)  
 40. *Chlorophyll an* (Chl *an*)  
 41. *Chlorophyll ao* (Chl *ao*)  
 42. *Chlorophyll ap* (Chl *ap*)  
 43. *Chlorophyll aq* (Chl *aq*)  
 44. *Chlorophyll ar* (Chl *ar*)  
 45. *Chlorophyll as* (Chl *as*)  
 46. *Chlorophyll at* (Chl *at*)  
 47. *Chlorophyll au* (Chl *au*)  
 48. *Chlorophyll av* (Chl *av*)  
 49. *Chlorophyll aw* (Chl *aw*)  
 50. *Chlorophyll ax* (Chl *ax*)  
 51. *Chlorophyll ay* (Chl *ay*)  
 52. *Chlorophyll az* (Chl *az*)  
 53. *Chlorophyll aza* (Chl *aza*)  
 54. *Chlorophyll abz* (Chl *abz*)  
 55. *Chlorophyll acz* (Chl *acz*)  
 56. *Chlorophyll adz* (Chl *adz*)  
 57. *Chlorophyll aez* (Chl *aez*)  
 58. *Chlorophyll afz* (Chl *afz*)  
 59. *Chlorophyll agz* (Chl *agz*)  
 60. *Chlorophyll ahz* (Chl *ahz*)  
 61. *Chlorophyll aiz* (Chl *aiz*)  
 62. *Chlorophyll ajz* (Chl *ajz*)  
 63. *Chlorophyll akz* (Chl *akz*)  
 64. *Chlorophyll alz* (Chl *alz*)  
 65. *Chlorophyll amz* (Chl *amz*)  
 66. *Chlorophyll anz* (Chl *anz*)  
 67. *Chlorophyll aoz* (Chl *aoz*)  
 68. *Chlorophyll apz* (Chl *apz*)  
 69. *Chlorophyll aqz* (Chl *aqz*)  
 70. *Chlorophyll arz* (Chl *arz*)  
 71. *Chlorophyll asz* (Chl *asz*)  
 72. *Chlorophyll atz* (Chl *atz*)  
 73. *Chlorophyll auz* (Chl *auz*)  
 74. *Chlorophyll avz* (Chl *avz*)  
 75. *Chlorophyll awz* (Chl *awz*)  
 76. *Chlorophyll axz* (Chl *axz*)  
 77. *Chlorophyll ayz* (Chl *ayz*)  
 78. *Chlorophyll ayz* (Chl *ayz*)  
 79. *Chlorophyll azz* (Chl *azz*)  
 80. *Chlorophyll azaa* (Chl *aza*)  
 81. *Chlorophyll abz* (Chl *abz*)  
 82. *Chlorophyll acz* (Chl *acz*)  
 83. *Chlorophyll adz* (Chl *adz*)  
 84. *Chlorophyll aez* (Chl *aez*)  
 85. *Chlorophyll afz* (Chl *afz*)  
 86. *Chlorophyll agz* (Chl *agz*)  
 87. *Chlorophyll ahz* (Chl *ahz*)  
 88. *Chlorophyll aiz* (Chl *aiz*)  
 89. *Chlorophyll ajz* (Chl *ajz*)  
 90. *Chlorophyll akz* (Chl *akz*)  
 91. *Chlorophyll alz* (Chl *alz*)  
 92. *Chlorophyll amz* (Chl *amz*)  
 93. *Chlorophyll anz* (Chl *anz*)  
 94. *Chlorophyll aoz* (Chl *aoz*)  
 95. *Chlorophyll apz* (Chl *apz*)  
 96. *Chlorophyll aqz* (Chl *aqz*)  
 97. *Chlorophyll arz* (Chl *arz*)  
 98. *Chlorophyll asz* (Chl *asz*)  
 99. *Chlorophyll atz* (Chl *atz*)  
 100. *Chlorophyll auz* (Chl *auz*)  
 101. *Chlorophyll avz* (Chl *avz*)  
 102. *Chlorophyll awz* (Chl *awz*)  
 103. *Chlorophyll axz* (Chl *axz*)  
 104. *Chlorophyll ayz* (Chl *ayz*)  
 105. *Chlorophyll ayz* (Chl *ayz*)  
 106. *Chlorophyll azz* (Chl *azz*)  
 107. *Chlorophyll azaa* (Chl *aza*)  
 108. *Chlorophyll abz* (Chl *abz*)  
 109. *Chlorophyll acz* (Chl *acz*)  
 110. *Chlorophyll adz* (Chl *adz*)  
 111. *Chlorophyll aez* (Chl *aez*)  
 112. *Chlorophyll afz* (Chl *afz*)  
 113. *Chlorophyll agz* (Chl *agz*)  
 114. *Chlorophyll ahz* (Chl *ahz*)  
 115. *Chlorophyll aiz* (Chl *aiz*)  
 116. *Chlorophyll ajz* (Chl *ajz*)  
 117. *Chlorophyll akz* (Chl *akz*)  
 118. *Chlorophyll alz* (Chl *alz*)  
 119. *Chlorophyll amz* (Chl *amz*)  
 120. *Chlorophyll anz* (Chl *anz*)  
 121. *Chlorophyll aoz* (Chl *aoz*)  
 122. *Chlorophyll apz* (Chl *apz*)  
 123. *Chlorophyll aqz* (Chl *aqz*)  
 124. *Chlorophyll arz* (Chl *arz*)  
 125. *Chlorophyll asz* (Chl *asz*)  
 126. *Chlorophyll atz* (Chl *atz*)  
 127. *Chlorophyll auz* (Chl *auz*)  
 128. *Chlorophyll avz* (Chl *avz*)  
 129. *Chlorophyll awz* (Chl *awz*)  
 130. *Chlorophyll axz* (Chl *axz*)  
 131. *Chlorophyll ayz* (Chl *ayz*)  
 132. *Chlorophyll ayz* (Chl *ayz*)  
 133.

1. The first step in the process is to identify the problem or issue that needs to be addressed. This involves gathering information and understanding the context of the problem.

Figure 1. The effect of the concentration of the *Agrobacterium* suspension on the transformation efficiency of *Agrobacterium* strains. The concentration of the *Agrobacterium* suspension was 10<sup>6</sup> cells/ml (○), 10<sup>7</sup> cells/ml (□), 10<sup>8</sup> cells/ml (△), and 10<sup>9</sup> cells/ml (◇). The error bars represent the standard deviation of three independent experiments.

•