

# CERTIFIED CORNER RECORDATION

Corner SE 1/16 Cor Sec 7 T. 34N R. 25W P.M.M. Lincoln County

1. NONE

2. Found:

A 5/8 ins. Rebar with Yellow Plastic Cap mkd. LS 7328S, North 2.0 ft. dist. from position.

3. Set:

An Aluminum Cap, 3/4 ins. diam., on 5/8 ins. Rebar, set 0.2 ft. above ground, mkd. as shown;

Established:

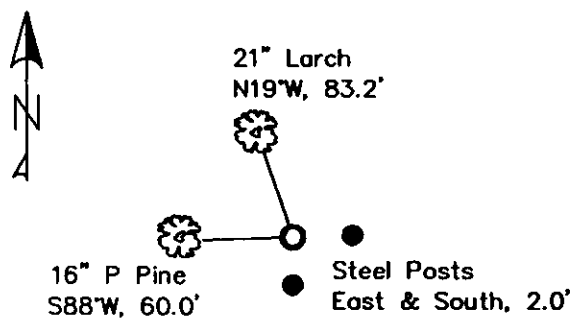
A Ponderosa Pine, 16 ins. in diam., bears S88°W, 60.0 ft. dist., scribed "SE 1/16 S7 BT";

A Larch, 21 ins. in diam., bears N19°W, 83.2 ft. dist., scribed "SE 1/16 S7 BT";

Steel posts with decals bear East, and South, 2.0 ft. dist.



MAGNETIC DECLINATION - 15°2' EAST



SKETCH OF CORNER

CERTIFICATION

I, Erich Shrock  
certify the information shown herein is true and correct.

LAWRENCE A. GLAHE  
certify that this Corner Recordation represents work performed by me or under my supervision in compliance with the "Corner Recordation Act" (MCA 92-2-1401, et seq. M.C.A.)

9748 LS

Date: 12-6-10 Registered Professional Engineer and Surveyor

Employer: GLAHE & ASSOC., INC.

Office of Clerk and Recorder, County of Lincoln. This "corner

record" was filed for record 230080 BOOK: CCR CC&R'S PAGE: 11679 Pages: 1

was noted on the cross-index STATE OF MONTANA LINCOLN COUNTY

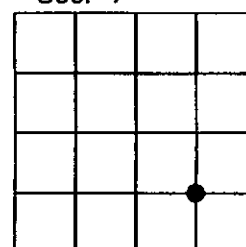
book No. TAMMY D. LAUER CLERK AND RECORDER

FEE: \$0.00 BY: Glenn Deane  
TO: GLAHE & ASSOC., INC. P.O. BOX 1863, SANDPOINT, ID. 83860,

Cross Index No. H-4 T. 34N R. 25W PMM

Adopted July 1, 1981, Montana Board of Professional Engineers & Land Surveyors

Sec. 7



● corner this sheet

