

CERTIFIED CORNER RECORDATION

Corner SW SW 1/64th Cor Sec 8 T. 34N R. 25W P.M.M. Lincoln County

1. NONE

2. Found:

A Rebar, 5/8 ins. diam. with Yellow plastic cap mkd. #7328S

3. Set:

Replaced Yellow plastic cap with an Aluminum Cap, 3 1/4 ins. diam., 0.2 ft. above ground, mkd. as shown;

Established:

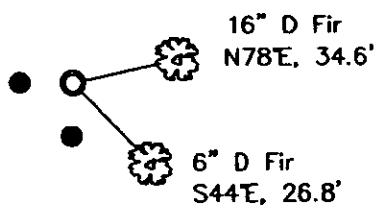
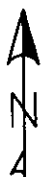
A Douglas Fir, 16 ins. in diam., bears N78°E, 34.6 ft. dist., scribed "SW-SW 1/64 S8 BT";

A Douglas Fir, 6 ins. in diam., bears S44°E, 26.8 ft. dist., scribed "SW-SW 1/64 S8 BT";

Steel posts with LSM decal bear South, 2.0 ft. dist. and West, 2.0 ft. dist.



MAGNETIC DECLINATION - 15°2' EAST



SKETCH OF CORNER

CERTIFICATION

I, Erich Shrack
certify the information shown herein is true and correct.
I, LAWRENCE A. GLAHE
certify that this Corner Recordation represents work
performed by me or under my supervision in compliance with
the "Corner Recordation Act" (Mont. Code Annotated, § 82-1-101, et seq.)
Date: 12-6-10 9748 LS
Employer: GLAHE & ASSOC., INC.

Office of Clerk and Recorder, County of Lincoln, This "corner
230077 BOOK: CCR CC&R'S PAGE: 11676 Pages: 1

record" was filed for re STATE OF MONTANA LINCOLN COUNTY
RECORDED: 12/09/2010 10:36 KOI: CC&R'S

was noted on the cross: TAMMY D. LAUER CLERK AND RECORDER

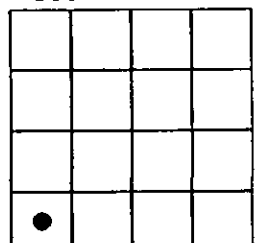
book No. FEE: \$0.00 BY: Tammy D. Lauer
TO: GLAHE & ASSOC., INC. P.O. BOX 1863, SANDPOINT, ID. 83860,

H-5

Cross Index No. J-6 T. 34N R. 25W PMM

Adopted July 1, 1981, Montana Board of Professional Engineers & Land Surveyors

Sec. 8



● corner this sheet

