

CERTIFIED CORNER RECORDATION

Corner S S 1/64th Cor Sec 8 T. 34N R. 25W P.M.M. Lincoln County

1. NONE

2. Found:

A Rebar, 5/8 ins. diam. with Yellow plastic cap mkd. #7328S

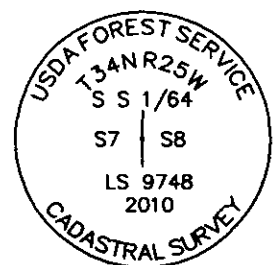
3. Set:

Replaced Yellow plastic cap with an Aluminum Cap, 3 1/4 ins. diam., 0.1 ft. above ground, mkd. as shown; Established:

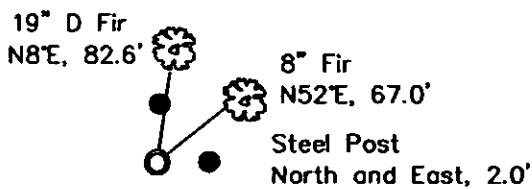
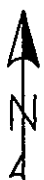
A Douglas Fir, 19 ins. in diam., bears N8°E, 82.6 ft. dist., scribed "S-S 1/64 S8 BT";

A Douglas Fir, 8 ins. in diam., bears N52°E, 67.0 ft. dist., scribed "S-S 1/64 S8 BT";

Steel posts with LSM decal bear North, 2.0 ft. dist. and East, 2.0 ft. dist.



MAGNETIC DECLINATION - 15°2' EAST



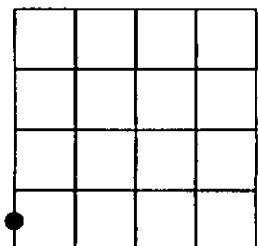
CERTIFICATION

I, Erich Shrack
certify the information shown herein is true and correct.
LAWRENCE A. GLAHE
certify that this Corner Recordation represents work performed by me or under my supervision in compliance with the "Corner Recordation Act" (MCA 82-401, et seq.) (M.C.A.)
Date: 12/10/2010 9748 LS
Employer: GLAHE & ASSOC., INC.

SKETCH OF CORNER

Office of Clerk and Recorder, County of Lincoln This "corner
230076 BOOK: CCR CC&R'S PAGE: 11675 Pages: 1
record" was filed for rec STATE OF MONTANA LINCOLN COUNTY
was noted on the cross- RECORDED: 12/09/2010 10:35 KOI: CC&R'S
book No. TAMMY D. LAUER CLERK AND RECORDER
FEE: \$0.00 BY: Tammy D. Lauer
TO: GLAHE & ASSOC., INC. P.O. BOX 1863, SANDPOINT, ID. 83860,
H-5
Cross Index No. J-5 T. 34N R. 25W PMM

Sec. 8



● corner this sheet

Adopted July 1, 1981, Montana Board of Professional Engineers & Land Surveyors



THE
FEDERAL BUREAU OF INVESTIGATION
UNITED STATES DEPARTMENT OF JUSTICE
WASHINGTON, D. C. 20535