

CERTIFIED CORNER RECORDATION

Corner N¼ Cor Sec 6 T. 34N R. 25W P.M.M. Lincoln County

1. 1894 G.L.O. Original Record by A.L. Jaqueth et al:

Set:

A Post, 3 ft. long, 3 ins. square, 24 ins. in the ground, mkd. ¼ S on North face;
From which:

A Tamarack, 36 ins. in diam., bears S4°30'E, 32 lks. dist., mkd. ¼ S. BT;

A Fir, 8 ins. in diam., bears N34°E, 45 lks. dist., mkd. ¼ S BT;

1961 BLM Remonumentation by Cunningham and Stephens:

Set:

An Iron post, 30 ins. long, 2½ ins. diam., 26 ins. in the ground, in concrete, with a Brass Cap, determined from the remains of the original bearing trees, mkd. as shown;

From which the remains of the original bearing trees:

A Fir, 18 ins. in diam., bears N34°E, 45 lks. dist., markings overgrown.

A Larch stump, 36 ins. in diam., bears S4½°E, 32 lks., dist., mkd. BT.

Established:

A Larch, 9 ins. in diam., bears S11°E, 78 lks., dist. mkd. 1/4 S 6 BT.

A Larch, 7 ins. in diam., bears N40½°W, 73 lks. mkd. 1/4 S 31 BT.

Raise a mound of stone, 3 ft. base, 2 ft. high, N. of iron post.

2. Found:

A BLM Brass Cap, 3¼ ins. in diam., mkd. as shown;

A Douglas Fir, 32 ins. in diam., bears N34°E, 45 lks. (30 ft.) dist., healed face;

A Douglas Fir, 9 ins. in diam., bears East, 18.2 ft. dist., healed face;

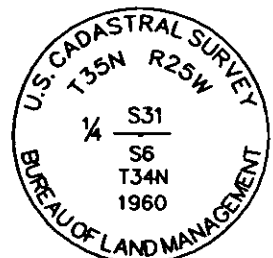
A Larch, 17 ins. in diam., bears N40°28'W, 38.10 ft. dist., healed face;

A Larch Stump, BT bears S4°30'E, 21.20 ft. dist.;

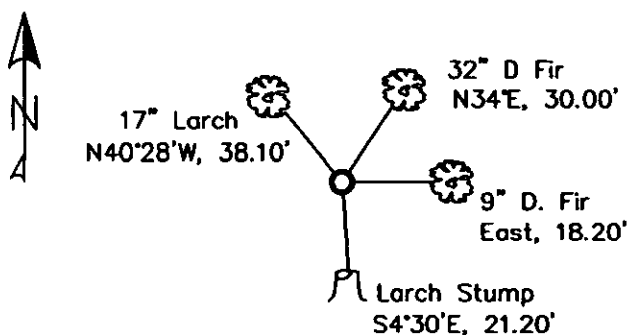
A Steel post with LSM & PB decals bears East, 3 ft. dist.

3. Established:

Painted Rocks near monument, painted blazes & bands on all BT's,
replaced missing tags and signs.



MAGNETIC DECLINATION - 15°2' EAST



SKETCH OF CORNER

CERTIFICATION

I, Erich Shrack
certify the information shown herein to be true and correct.

LAWRENCE A. GLAHE
certify that the Corner shown herein represents work performed by me or under my direction in compliance with the "Corner Recordation Act" (P.L. 86-601, et seq. U.S.A.)

Date: 12-10-10 9748 LS

Employer: GLAHE & ASSOC., INC.

Office of Clerk and Recorder, County of Lincoln. This "corner

record" was filed for record on

was noted on the cross-index

book No. _____

230073 BOOK: CCR CC&R'S PAGE: 11672 Pages: 1

STATE OF MONTANA LINCOLN COUNTY

RECORDED: 12/09/2010 10:32 KOI: CC&R'S

TAMMY D. LAUER CLERK AND RECORDER

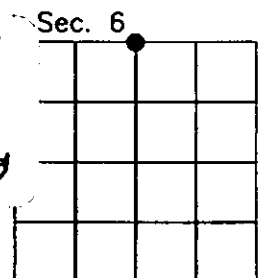
FEE: \$0.00

BY: Jeannie Lauer

TO: GLAHE & ASSOC., INC. P.O. BOX 1863, SANDPOINT, ID. 83860,

Cross Index No. A-3 T. 34N R. 25W PMM

Adopted July 1, 1981, Montana Board of Professional Engineers & Land Surveyors



● corner this sheet

