

CERTIFIED CORNER RECORDATION

Corner NE Cor Sec 7 T. 34N R. 25W P.M.M. Lincoln County

1. 1894 G.L.O. Original Record by A.L. Jaqueth et al:

Set:

A Post, 4 ft. long, 4 ins. square, 24 ins. in the ground, for Cor to Secs. 5,6,7 & 8, mkd. T34N S5 on NE, R25W S8 on SE, S7 on SW and S6 on NW faces, with 5 notches on South and East edges;

From which:

A Fir, 8 ins. in diam., bears N61°E, 33 lks. dist., mkd. T34N R25W S5 BT;
A Tamarack, 14 ins. in diam., bears S57°30'E, 41 lks. dist., mkd. T34N R25W S8 BT;
A Tamarack, 10 ins. in diam., bears S80°45'W, 45 lks. dist., mkd. T34N R25W S7 BT;
A Tamarack, 12 ins. in diam., bears N80°W, 57 lks. dist., mkd. T34N R25W S6 BT;

1960 BLM Remonumentation by Cunningham & Stephens:

The cor. of secs. 5,6,7 and 8, monumented with a disintergrated wooden post, firmly set in the ground

From which:

A Stump, 9 ins. in diam., bears N61°E, 33 lks. dist.,
A Dead Larch, 24 ins. in diam., bears S57½°E, 41 lks. dist., visible marks R25W S6;
A Dead Larch, 10 ins. in diam., bears S80¼°W, 45 lks. dist., mkd. T34N R25W S7 BT;
A Stump, 18 ins. in diam., bears N80°W, 57 lks. dist., marks BT.

Set:

A Iron post, 30 ins. long, 2½ ins. diam., 26 ins. in the ground, in concrete, with
A Brass Cap mkd. as shown;

Established:

A Fir, 5 ins. in diam., bears N14°E, 29 lks. dist., mkd. T34N R25W S5 BT;
A Fir, 8 ins. in diam., bears S10½°E, 52 lks. dist., mkd. T34N R25W S8 BT;
A Larch, 10 ins. in diam., bears S60 3/4°W, 77 lks. dist., mkd. T34N R25W S6 BT;
A Fir, 10 ins. in diam., bears N54½°W, 42 lks. dist., mkd. T34N R25W S6 BT;
Raised a mound of stone, 3 ft. base, 2 ft. high, West of the Iron post.

1984 Robert M. Ryan 4236S:

Used BLM Remonumentation records from 1960;

Found:

A Std. Brass Cap at fence corner running North and West;
A Fir, 17 ins. in diam., bears N54°29'W, 28.1 ft. dist.;
A Fir, 12 ins. in diam., bears N15°06'E, 19.3 ft. dist.;
A Fir, 13 ins. in diam., bears S10°28'E, 34.5 ft. dist.;
A Tamarack, 16 ins. in diam., bears S61°09'W, 51.2 ft. dist.

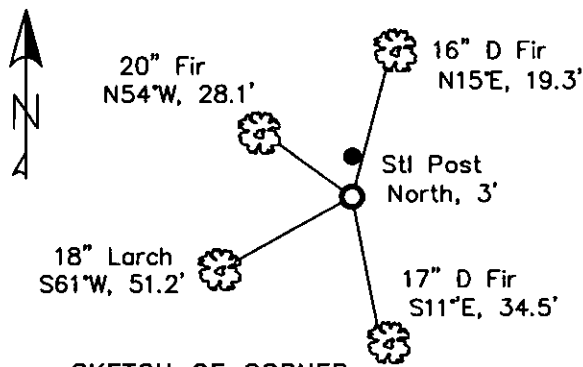
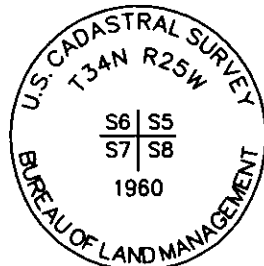
2. Found:

A BLM Brass Cap, 3¼ ins. in diam., 1 ins. above ground, mkd. as shown;
A Douglas Fir, 16 ins. in diam., bears N15°E, 19.3 ft. dist., healed face,
A Douglas Fir, 17 ins. in diam., bears S11°E, 34.5 ft. dist., healed face;
A Douglas Fir, 18 ins. in diam., bears S61°W, 51.2 ft. dist., healed face;
A Douglas Fir, 20 ins. in diam., bears N54°W, 28.1 ft. dist., healed face;
A Steel Post with LSM and PB decals bears North, 3 ft. dist.

3. Stacked and painted a mound of rock around monument;

Painted blazes and bands on all BTs; Replaced tag and sign where needed.

MAGNETIC DECLINATION - 15°4' EAST



SKETCH OF CORNER

CERTIFICATION

I, Erich Shrack
certify the information shown herein is true and correct.

LAWRENCE A. GLAHE
I, LAWRENCE A. GLAHE represent a
person or persons in compliance with
the "Corner Recordation Act" (P.L. 86-624, et seq. H.R.A.)

Date: 11-15-2010 9748 LS
Employer: GLAHE & ASSOC., INC.

Office of Clerk and Recorder, County of Lincoln. This "corner

record" was filed for rec:

229600 BOOK: CCR CC&R'S PAGE: 11585 Pages: 1

was noted on the cross-

STATE OF MONTANA LINCOLN COUNTY

RECORDED: 11/15/2010 11:12 KOI: CC&R'S

book No. _____

TAMMY D. LAUER CLERK AND RECORDER

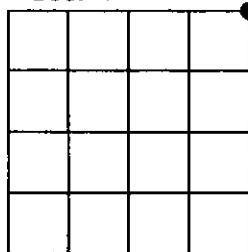
FEE: \$0.00

TO: GLAHE & ASSOC., INC. P.O. BOX 1863, SANDPOINT, ID. 83860

Cross Index No. E-5 T. 34N R. 25W PMM

Adopted July 1, 1981, Montana Board of Professional Engineers & Land Surveyors

Sec. 7



● corner this sheet

