

# CERTIFIED CORNER RECORDATION

Corner N¼ Cor Sec 7 T. 34N R. 25W P.M.M. Lincoln County

## 1. 1894 Original GLO by A.L. Jaqueth et al

Set:

A post 3 ft. long, 3 ins. square, 24 ins. in the ground for ¼ Sec. cor.  
mkd. 1/4 S on N face;

From which:

A Fir, 24 ins. in diam., bears S81°30'W, 95 lks. dist., mkd. 1/4 S BT;

A Fir, 10 ins. in diam., bears N7°W, 52 lks. dist. mkd. 1/4 S BT.

## 1960 BLM Remonumentation by David R. Cunningham:

Found:

A Dead Fir, 30 ins. in diam., bears S81½°W., 95 lks. dist., mkd. with an overgrown blaze;

A Stump, 18 ins. in diam., bears N7°W, 52 lks. dist., visible marks BT;

Set:

An Iron post, 30 ins. long, 2½ ins. diam., 26 ins. in the ground, in concrete, with

A Brass Cap mkd. as shown;

A Fir, 12 ins. in diam., bears S40°E, 55 lks. dist., mkd. ¼ S7 BT;

A Fir, 14 ins. in diam., bears N30¼°W, 109 lks. dist., mkd. ¼ S6 BT;

Raised a mound of stone, 3 ft. base, 2 ft. high, North of the iron post.

## 1985 Robert M. Ryan 4236S

Used BLM Remonumentation records from 1961;

Found:

A Std. Brass Cap on top of large bench at south side of stone mound;

A Fir, 18 ins. in diam., bears N30°37'W, 72.5 ft. dist.;

A Fir, 13 ins. in diam., bears S40°16'E, 36.5 ft. dist.

## 2. Found:

A BLM Brass Cap, 3¼ ins. in diam., flush with ground, mkd. as shown;

A Douglas Fir, 14 ins. in diam., bears S40°E, 36.5 ft. dist., healed face,

A Douglas Fir stump, bears N30°37'W, 72.5 ft. dist.;

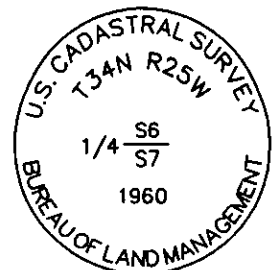
A Douglas Fir, 18 ins. in diam., bears N18°W, 77.2 ft. dist., visible scribe;

A Douglas Fir, bears S9°W, 31.9 ft. dist. with a K Tag;

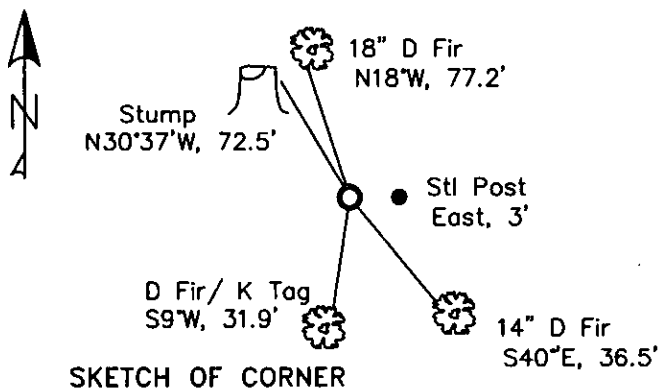
A Steel Post with LSM and PB decals bears East, 3 ft. dist.

## 3. Stacked and painted a mound of rock around monument;

Painted blazes and bands on all BTs; Replaced tag and sign where needed.



MAGNETIC DECLINATION - 15°4' EAST



SKETCH OF CORNER

CERTIFICATION

I, Erich Shrack  
certify the information shown herein is true and correct.

I, LAWRENCE A. GLAHE  
certify that this Corner Recordation represents work performed by me or under my direction in compliance with the "Corner Recordation Act" (P.L. 86-224-01, et seq. (U.S.C.A.))

Date: 1/10/10 9748 LS  
Employer: GLAHE & ASSOC., INC.

Office of Clerk and Recorder, County of Lincoln. This "corner

record" was filed for recd 229599 BOOK: CCR CC&R'S PAGE: 11584 Pages: 1

was noted on the cross-RECORDED: 11/15/2010 11:11 KOI: CC&R'S

book No. TAMMY D. LAUER CLERK AND RECORDER

FEE: \$0.00

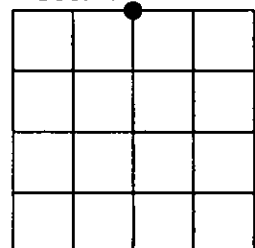
BY: Laurie Derris

TO: GLAHE & ASSOC., INC. P.O. BOX 1863, SANDPOINT, ID. 83860,

Cross Index No. E-3 T. 34N R. 25W PMM

Adopted July 1, 1981, Montana Board of Professional Engineers & Land Surveyors

Sec. 7



● corner this sheet

