

CERTIFIED CORNER RECORDATION

Corner NW Cor Sec 7 T. 34N R. 25W P.M.M. Lincoln County

1. 1894 G.L.O. Original Record by A.L. Jaqueth et al:

Set:

A Post, 4 ft. long, 4 ins. square, 24 ins. in the ground for Cor to Secs. 1,6,7 &12 mkd. T34N S6 on NE, R25W S7 on SE, R26W S12 on SW and S1 on NW face with 5 notches on North edges;

From which:

A Fir, 36 ins. in diam., bers N38°E, 13 lks. dist., mkd. T34N R25W S6 BT;
A Pine, 18 ins. in diam., bears S60°15'E, 24 lks. dist., mkd. T34N R25W S7 BT;
A Pine, 7 ins. in diam., bears S58°30'W, 26 lks. dist., mkd. T34N R26W S12 BT;
A Pine, 6 ins. in diam., bears N34°W, 30 lks. dist., mkd. T34N R26W S1 BT;

1961 BLM Remonumentation by Cunningham and Stephens:

Set:

An Iron post, 30 ins. long, 2½ ins. diam., 26 ins. in the ground with

A Brass Cap mkd. as shown;

From which:

A Stump hole bears N49¼°E, 13 lks. dist., remains of tree lying on ground, visible marks T34N R25W;

A decayed stump, bears S 55 3/4°E, 24 lks. dist.;

A Stump hole, bears S58½°W, 26 lks. dist., remains of tree lying on ground, mkd. T34N R26W S12 BT;

A Stump hole, bears N37°W, 30 lks. dist.,

Established:

A Fir, 10 ins. diam., bears N20°E, 22 lks. dist., mkd. T34N R25W S6 BT;

A Pine, 10 ins. diam., bears S47¼°E, 47 lks. dist., mkd. T34N R25W S7 BT;

A Larch, 10 ins. diam., bears S28¼°W, 55 lks. dist., mkd. T34N R26W S12 BT;

A Fir, 9 ins. diam., bears N15½°W, 36 lks. dist., mkd. T34N R26W S1 BT.

2. Found:

A BLM Brass Cap, 3¼ ins. in diam., 4 ins. above ground, mkd. as shown;

A Fir, 17 ins. in diam., bears N20°E, 14.4 ft. dist., healed face,

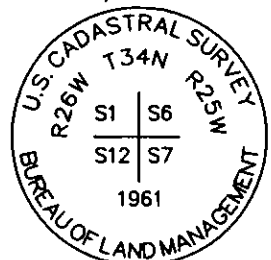
A Larch, 17 ins. in diam., bears S28¼°W, 36.4 ft. dist. healed face;

A Steel Post with LSM decal bears West, 2.5 ft. dist.

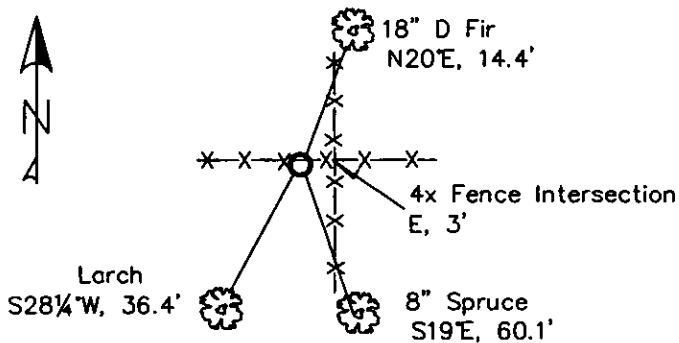
3. Established:

A Spruce, 8 ins. in diam., bears S19°E, 60.1 ft. dist., scribed "T34N R25W S7 BT;

Painted blazes and bands on all BTs; Replaced tag and sign on NE BT;



MAGNETIC DECLINATION - 15°4' EAST



SKETCH OF CORNER

CERTIFICATION

I, Erich Shrack
certify the information shown herein to be true and correct.

Lawrence A. Glahe
I, LAWRENCE A. GLAHE
certify that this Corner Location represents a mark
performed by me or under my direction in compliance with
the "Corner Recordation Act" (P.L. 86-401, et seq. U.S.C.A.)

9748 LS

Date: 11-12-10

Employer: GLAHE & ASSOC., INC.

Office of Clerk and Recorder, County of Lincoln. This "corner

record" was filed for record on

was noted on the cross-index

book No. _____

229597 BOOK: CCR CC&R'S PAGE: 11582 Pages: 1

STATE OF MONTANA LINCOLN COUNTY

RECORDED: 11/15/2010 11:09 KOI: CC&R'S

TAMMY D. LAUER CLERK AND RECORDER

FEE: \$0.00

TO: GLAHE & ASSOC., INC. P.O. BOX 1863, SANDPOINT, ID. 83869

Cross Index No. E-1 T. 34N R. 25W PMM

Adopted July 1, 1981, Montana Board of Professional Engineers & Land Surveyors

Sec. 7

● corner this sheet

