

CERTIFIED CORNER RECORDATION

Corner SW Cor Sec 7 T. 34N R. 25W P.M.M. Lincoln County

1. 1894 G.L.O. Original Record by A.L. Jaqueth et al

Set:

A Limestone 12x10x6 ins., 8 ins. in the ground for cor. to secs. 7, 12, 13 & 18, mkd. with 4 notches on South and 2 notches on North edges;

From which;

- A Fir, 6 ins. in diam., bears N33°E, 6 lks. dist., mkd. T34N R25W S7 BT;
- A Fir, 6 ins. in diam., bears S34°E, 45 lks. dist., mkd. T34N R25W S18 BT;
- A Fir, 8 ins. in diam., bears S80°W, 29 lks. dist., mkd. T34N R26W S13 BT;
- A Fir, 10 ins. in diam., bears N28°W, 12 lks. dist., mkd. T34N R26W S12 BT;

1960 BLM Remonumentation by David L. Cunningham

Found:

A Limestone, 12x5x6 ins., firmly set and mkd. with 2 grooves on the North and 4 grooves on the South faces;

A Fir, 12 ins. in diam., bears N40½°E, 6 lks. dist., mkd. T34N R25W S7 BT;

A Stump, 12 ins. diam., bears S34°E, 46 lks. dist., mkd. with an overgrown blaze;

A Stump, 20 ins. diam., bears S78¼°W, 29 lks. dist., visible marks BT;

Set:

An Iron post, 30 ins. long, 2½ ins. diam., 26 ins. in the ground, in concrete, with A Brass Cap mkd. as shown;

A Fir, 9 ins. diam., bears N68½°E, 35 lks. dist., mkd. T35N R25W S7 BT;

A Fir, 9 ins. diam., bears S8°E, 16 lks. dist., mkd. T35N R25W S18 BT;

A Fir, 8 ins. diam., bears S27½°W, 66 lks. dist., mkd. T34N R25W S13 BT;

A Fir, 9 ins. diam., bears N60°W, 34 lks. dist., mkd. T34N R25W S12 BT;

Buried the original stone alongside, and raise a mound of stone, 3 ft. base, 2 ft. high West of Iron post.

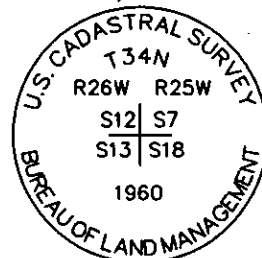
2. Found:

- A BLM Brass Cap, 3¼ ins. in diam., 0.1 ft. above ground, mkd. as shown;
- A Douglas Fir, 15 ins. in diam., bears N40°E, 4.0 ft. dist., some visible scribe,
- A Douglas Fir, 15 ins. in diam., bears N69°E, 16.5 ft. dist., healed face;
- A Douglas Fir, 10 ins. in diam., bears S34°E, 29.7 ft. dist., visible scribe;
- A Douglas Fir, 15 ins. in diam., bears S28°W, 43.8 ft. dist., healed face;
- A Douglas Fir, 10 ins. in diam., bears N32°W, 17.9 ft. dist., visible scribe;
- A Fir snag, bears N60°W, 22.0 ft. dist., healed face;

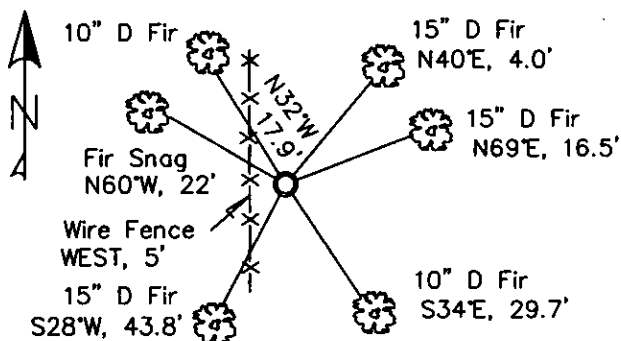
3. Painted a mound of rock southwest of monument;

Painted blazes and bands on all BTs;

Replaced tags & signs as needed;



MAGNETIC DECLINATION - 15°4' EAST



SKETCH OF CORNER

CERTIFICATION

I, Erich Shrack
certify the information shown herein to be true and correct.

LAWRENCE A. GLAHE
certify that this Corner Recordation represents work performed by me or under my direction in compliance with the "Corner Recordation Act" (Pub. Law 86-601, et seq. (U.S.A.))

9748 LS

Date: 11-10-10 9748 LS

Employer: GLAHE & ASSOC., INC.

Office of Clerk and Recorder, County of Lincoln This "corner

record" was filed for record 229595 BOOK: CCR CC&R'S PAGE: 11580 Pages: 1

was noted on the cross-index STATE OF MONTANA LINCOLN COUNTY

book No. RECORDED: 11/15/2010 11:07 KOI: CC&R'S

TAMMY D. LAUER CLERK AND RECORDER

FEE: \$0.00 BY:

TO: GLAHE & ASSOC., INC. P.O. BOX 1863, SANDPOINT, ID. 83860

Cross Index No. J-1 T. 34N R. 25W PMM

Adopted July 1, 1981, Montana Board of Professional Engineers & Land Surveyors

● corner this sheet

2000-0000-0000

00000000

00000000

0000

0000

0000

0000

0000

0000

0000

0000

0000

0000

0000

0000

0000

0000

0000

0000

0000

0000

0000

0000

0000

0000

0000

0000

0000

0000

0000

0000

0000

0000

0000

0000

0000

0000

0000