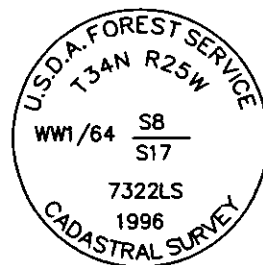


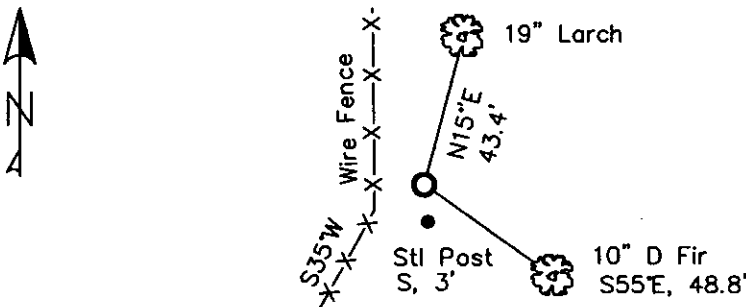
CERTIFIED CORNER RECORDATION

Corner WW 64th Cor Sec 8/17 T. 34N R. 25W P.M.M. Lincoln County

1. None
2. Found:
 - A USFS Aluminum Cap, 3 1/4 ins. in diam., flush with ground, mkd. as shown;
 - A Larch, 19 ins. in diam., bears N15°E, 43.4 ft. dist., with healed face,
 - A Douglas Fir, 10 ins. in diam., bears S55°E, 48.8 ft. dist., with healed face;
 - A Steel Post, bears South, 3 ft. dist.
3. Placed and painted a mound of rock around monument;
 - Painted blazes and bands on all BTs; Replaced tags & signs as needed;



MAGNETIC DECLINATION - 15°4' EAST



CERTIFICATION

I, Erich Shrack
 certify the information shown herein is true and correct.

Signature Ground Party Chief

I, LAWRENCE A. GLAHE
 certify that this Corner Recordation was performed by me or under my direction in compliance with the "Corner Recordation Act" (P.L. 86-401, et seq. (U.S.C.A.))

Signature Surveyor

Date: 11-10-10 9748 LS

Employer: GLAHE & ASSOC., INC.

SKETCH OF CORNER

Office of Clerk and Recorder, County of Lincoln. This "corner

record" was filed for record 229592 BOOK: CCR CC&R'S PAGE: 11577 Pages: 1

was noted on the cross-in RECORDED: 11/15/2010 11:04 KOI: CC&R'S

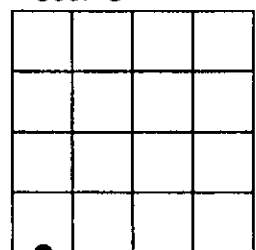
book No. TAMMY D. LAUER CLERK AND RECORDER

FEE: \$0.00 BY: Lawrence Glahé
 TO: GLAHE & ASSOC., INC. P.O. BOX 1863, SANDPOINT, ID. 83860,

Cross Index No. J-5.5 T. 34N R. 25W PMM

Adopted July 1, 1981, Montana Board of Professional Engineers & Land Surveyors

Sec. 8



● corner this sheet

THE UNIVERSITY OF CHICAGO
LIBRARY

THE UNIVERSITY OF CHICAGO
LIBRARY

THE UNIVERSITY OF CHICAGO
LIBRARY

THE UNIVERSITY OF CHICAGO
LIBRARY

THE UNIVERSITY OF CHICAGO
LIBRARY