

CERTIFIED CORNER RECORDATION

Corner W 1/4 Cor Sec 8 T. 34N R. 25W P.M.M. Lincoln County

1. 1894 G.L.O. Original Record by A.L. Jaqueth

Set a post 3 ft. long, 3 ins. square, 24 ins. in the ground for 1/4 Sec Cor., mkd 1/4 S on W face;

From which:

A Tamarack, 8 ins. in diam., bears S81°E, 10 lks. dist., mkd. 1/4 S BT;

A Fir, 10 ins. in diam., bears S37°30'W, 33 lks. dist., mkd. 1/4 S BT;

1961 GLO Remonumentation by Cunningham & Stephens:

The 1/4 sec. cor. of secs. 7 & 8, monumented with a wooden post, 3 ft. long, 3 ins. sq., firmly set and mkd. 1/4 on the W. face,

From which:

A Lorch 8 ins. in diam., bears S81°E, 10 lks. dist., mkd. 1/4 S BT;

A Fir, 13 ins. in diam., bears S37 1/2°W, 33 lks. dist., mkd. 1/4 S BT;

Set:

An Iron post, 30 ins. long, 2 1/2 ins. diam., 26 ins. in the ground, in concrete, with A Brass Cap, mkd. as shown;

A Fir, 8 ins. in diam., bears N27°E, 61 lks. dist., mkd. 1/4 S8 BT;

Buried the original wooden post alongside and raised a mound of stone, 3 ft. base, 2 ft. high, West of the iron post.

2. Found:

A BLM Brass Cap, 3 1/4 ins. in diam., flush with ground, mkd. as shown;

A Douglas Fir, 20 ins. in diam., bears N27°E, 40.5 ft. dist., with healed face,

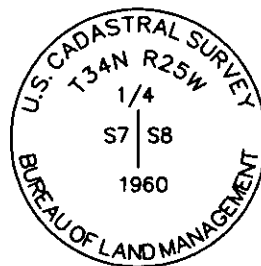
A Douglas Fir, 18 ins. in diam., bears S43°W, 21.5 ft. dist., with healed face;

3. Placed:

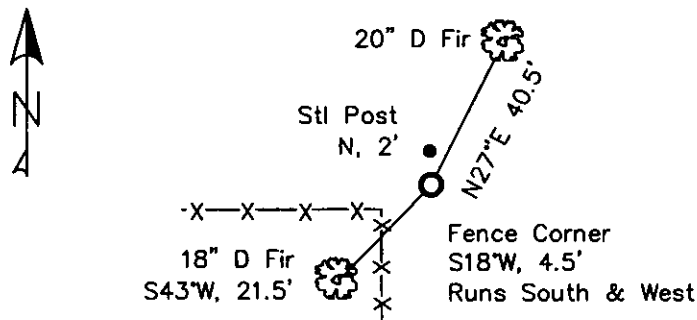
A Steel post with LSM sign, bears North, 2 ft. dist;

Stacked and painted a mound of rock near monument;

Painted blazes and bands on all BTs; Replaced tags & signs as needed;



MAGNETIC DECLINATION - 15°4' EAST



SKETCH OF CORNER

CERTIFICATION

I, Erich Shrack
certify that the information shown above is true and correct.

LAWRENCE A. GLAHE
I, LAWRENCE A. GLAHE, a duly qualified and licensed Professional Engineer and Land Surveyor, certify that this Corner Recordation represents work performed by me or under my supervision in compliance with the "Corner Recordation Act" (MCA 22-1-01, et seq. M.C.A.)

Date: 11-10-10 9748 LS
Employer: GLAHE & ASSOC., INC.

Office of Clerk and Recorder, County of Lincoln. This "corner

record" was filed for recor. 229591 BOOK: CCR CC&R'S PAGE: 11576 Pages: 1

was noted on the cross-index STATE OF MONTANA LINCOLN COUNTY

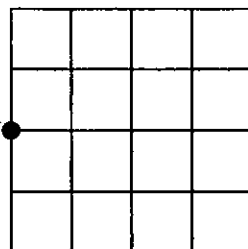
book No. TAMMY D. LAUER CLERK AND RECORDER

FEE: \$0.00 BY: Glennie Lauer
TO: GLAHE & ASSOC., INC. P.O. BOX 1863, SANDPOINT, ID. 83860,

Cross Index No. G-5 T. 34N R. 25W PMM

Adopted July 1, 1981, Montana Board of Professional Engineers & Land Surveyors

Sec. 8



● corner this sheet



THE UNIVERSITY OF CHICAGO

DEPARTMENT OF THE HISTORY OF ARTS

THE UNIVERSITY OF CHICAGO PRESS

CHICAGO, ILLINOIS

1963

THE UNIVERSITY OF CHICAGO PRESS

CHICAGO, ILLINOIS

1963

THE UNIVERSITY OF CHICAGO PRESS

CHICAGO, ILLINOIS

1963

THE UNIVERSITY OF CHICAGO PRESS

CHICAGO, ILLINOIS

1963

THE UNIVERSITY OF CHICAGO PRESS

CHICAGO, ILLINOIS

1963

THE UNIVERSITY OF CHICAGO PRESS

CHICAGO, ILLINOIS

1963

THE UNIVERSITY OF CHICAGO PRESS

CHICAGO, ILLINOIS

1963